

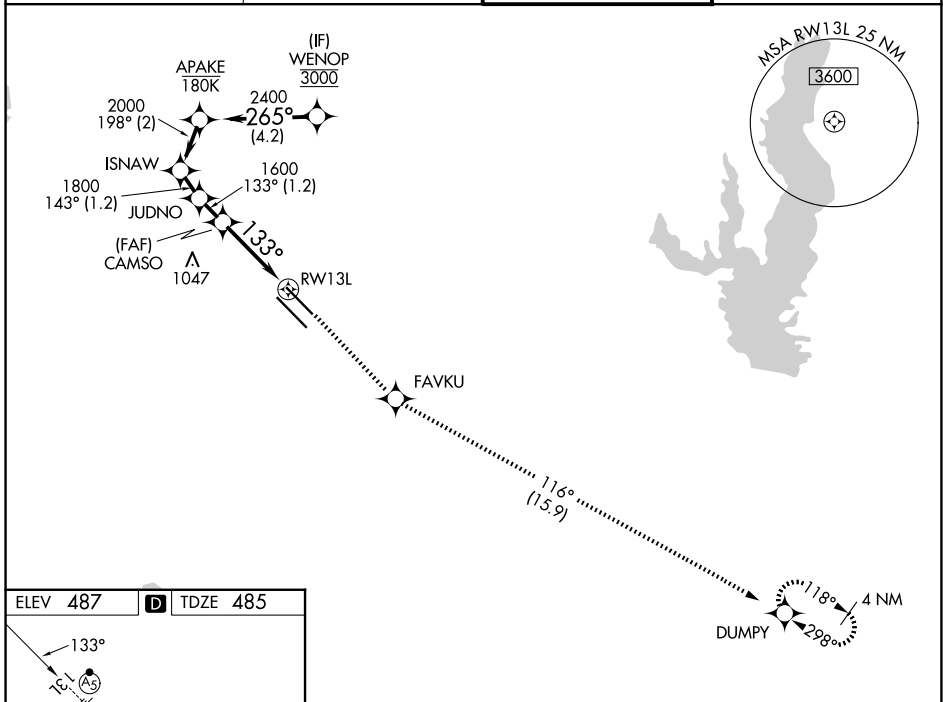
WAAS CH 50547 W13A	APP CRS 133°	Rwy Ldg 7352 TDZE 485 Apt Elev 487
--	------------------------	---

RNAV (GPS) Y RWY 13L

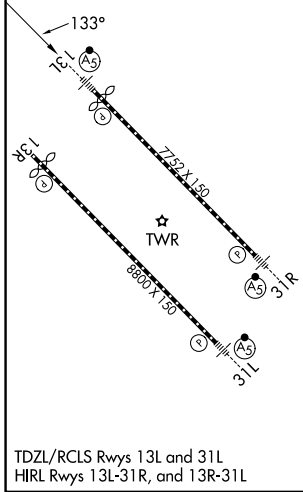
DALLAS LOVE FLD (DAL)

RNP APCH - GPS.	MALSR MISSED APPROACH: Climb to 3000 direct FAVKU and on track 116° to DUMPY and hold.
RADAR required for procedure entry.	
For uncompensated Baro-VNAV systems, LNAV/VNAV NA below -8°C or above 54°C. For inop ALS, increase LNAV/VNAV all Cats visibility to RVR 4500 and LNAV Cats C and D visibility to 1 3/4 SM.	

D-ATIS 120.15	LONE STAR APP CON 124.3 282.275 (N) 125.2 343.65 (S)	LOVE TOWER 123.7 239.3	GND CON 121.75 348.6
-------------------------	--	----------------------------------	--------------------------------



ELEV 487	D	TDZE 485
-----------------	----------	-----------------



	WENOP	APAKE	ISNAW	JUDNO	CAMSO	FAVKU	DUMPY
	3000	2400	2000	1800	1600	tr 116°	
	← 4.2 NM		← 2 NM		← 1.2 NM		← 1.6 NM
	← 1.8 NM						← 1.8 NM
GP 3.00° TCH 55							
CATEGORY	A		B		C		D
LPV DA			685/18		200 (200-1/2)		
LNAV/VNAV DA			760/24		275 (300-1/2)		
LNAV MDA	1100/24		615 (700-1/2)		1100-1 3/8 615 (700-1 3/8)		
CIRCLING	1100-1 613 (700-1)		1140-1 653 (700-1)		1280-2 1/4 793 (800-2 1/4)		1520-3 1033 (1100-3)

SC-2, 14 MAY 2026 to 11 JUN 2026

SC-2, 14 MAY 2026 to 11 JUN 2026