

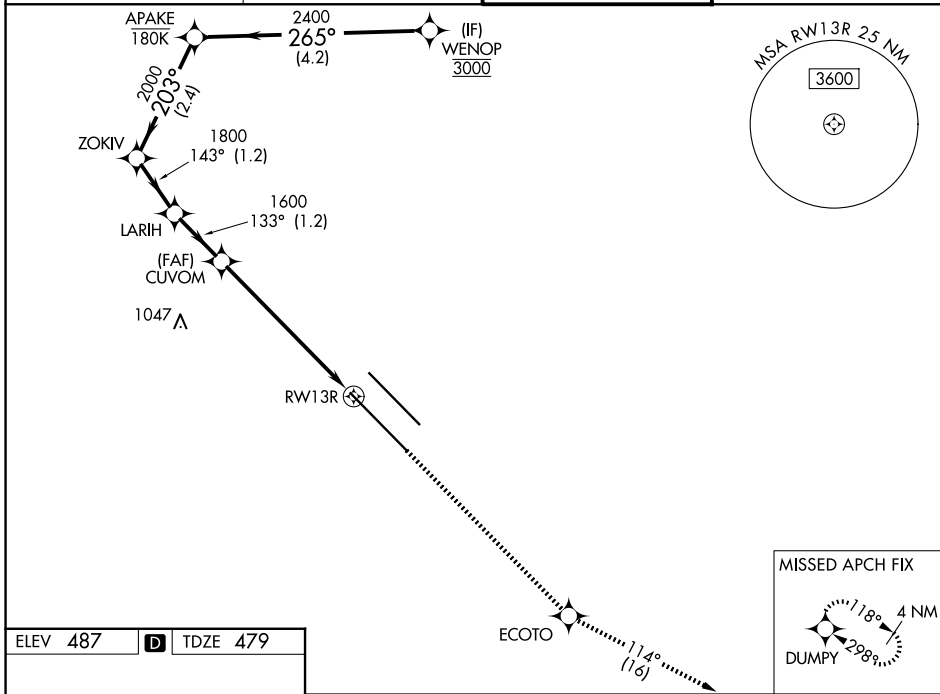
WAAS CH <b>97747</b> <b>W13B</b>	APP CRS <b>133°</b>	Rwy Ldg TDZE Apt Elev	<b>8310</b> <b>479</b> <b>487</b>
--	------------------------	-----------------------------	---

# RNAV (GPS) Y RWY 13R

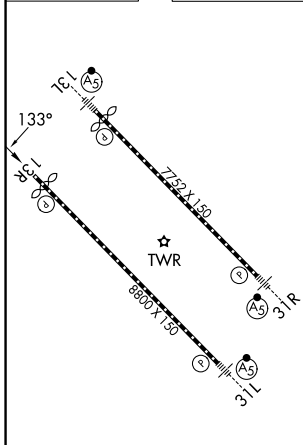
DALLAS LOVE FLD (DAL)

RNP APCH - GPS.		MISSED APPROACH: Climb to 3000 direct ECOTO and on track 114° to DUMPY and hold.	
RADAR required for procedure entry.			
For uncompensated Baro-VNAV systems, LNAV/VNAV NA below -8°C or above 54°C.			

D-ATIS <b>120.15</b>	LONE STAR APP CON <b>124.3 282.275 (N)</b> <b>125.2 343.65 (S)</b>	LOVE TOWER <b>123.7 239.3</b>	GND CON <b>121.75 348.6</b>
-------------------------	--	----------------------------------	--------------------------------



ELEV 487	<b>D</b>	TDZE 479
----------	----------	----------



TDZL/RCLS Rwws 13L and 31L  
HIRL Rwws 13L-31R, and 13R-31L

VGSI and RNAV glidepath not coincident (VGSI Angle 3.00/TCH 52).

WAYPOINT	ALTITUDE	ANGLE	DISTANCE	CATEGORY
WENOP	3000	265°	4.2 NM	A
APAKE	2400	203°	2.4 NM	B
ZOKIV	2000	143°	1.2 NM	B
LARIH	1800	133°	1.2 NM	C
CUVOM	1600	133°	1 NM	C
ECOTO	3000	114°	2.3 NM	D
DUMPY	3000	118°	4 NM	D

CATEGORY	A	B	C	D
LPV DA		679/40	200 (200-¾)	
LNAV/VNAV DA		831/55	352 (400-1)	
LNAV MDA	1280/55 801 (800-1)	1280-1¼ 801 (800-1¼)	1280-2½	801 (800-2½)
CIRCLING	1280-1 793 (800-1)	1280-1¼ 793 (800-1¼)	1280-2½ 793 (800-2½)	1520-3 1033 (1100-3)

SC-2, 14 MAY 2026 to 11 JUN 2026

SC-2, 14 MAY 2026 to 11 JUN 2026