

RNAV (GPS) Y RWY 31R

DALLAS LOVE FLD (DAL)

WAAS CH 87123 W31B	APP CRS 313°	Rwy Ldg 6952 TDZE 487 Apt Elev 487
--	------------------------	---

RNP APCH - GPS

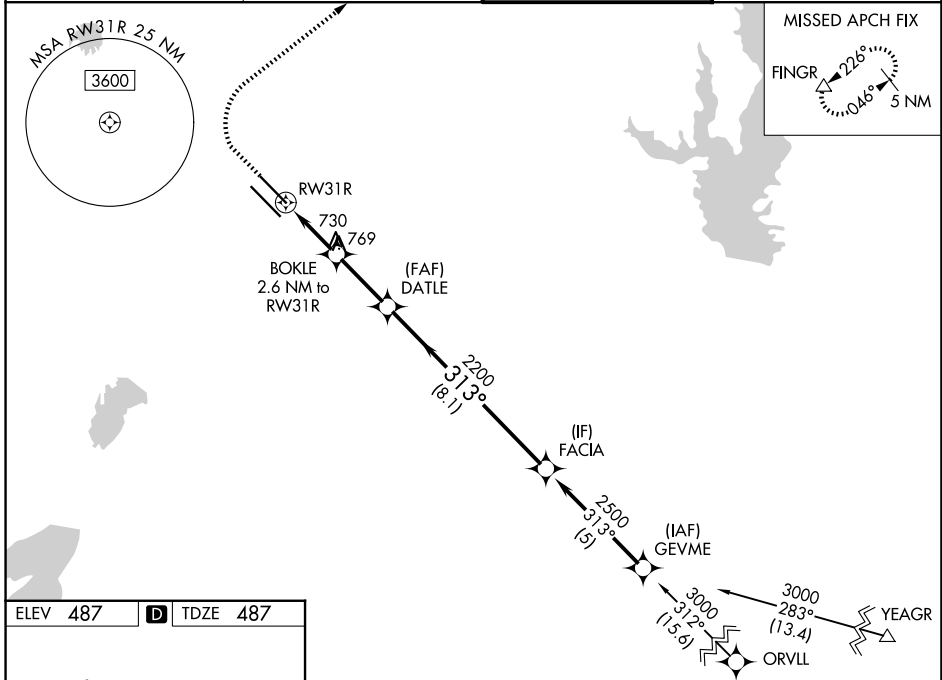
Simultaneous approach authorized. For uncompensated Baro-VNAV systems, LNAV/VNAV NA below -15°C or above 54°C. LNAV procedure NA during simultaneous operations. Use of FD or AP required during simultaneous operations. For inop ALS, increase LNAV/VNAV all Cats visibility to 1½ SM and LNAV Cats C and D visibility to 1½ SM. *RVR 1800 authorized with use of FD or AP or HUD to DA.

MALSRL

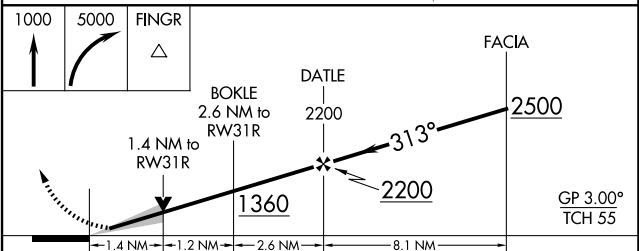
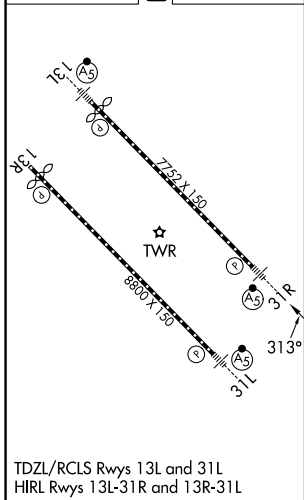


MISSED APPROACH:
Climb to 1000 then climbing right turn to 5000 direct FINGER and hold.

D-ATIS 120.15	LONE STAR APP CON 124.3 282.275 (N) 125.2 343.65 (S)	LOVE TOWER 123.7 239.3	GND CON 121.75 348.6
-------------------------	--	----------------------------------	--------------------------------



ELEV 487	D	TDZE 487
-----------------	----------	-----------------



CATEGORY	A	B	C	D
LPV DA*		687/24	200 (200-½)	
LNAV/VNAV DA		980/50	493 (500-1)	
LNAV MDA	980/24	493 (500-½)	980/50	493 (500-1)
CIRCLING	1080-1 593 (600-1)	1140-1 653 (700-1)	1280-2¼ 793 (800-2¼)	1520-3 1033 (1100-3)

DALLAS, TEXAS
Amdt 3C 14MAY26

32°51'N-96°51'W

RNAV (GPS) Y RWY 31R

DALLAS LOVE FLD (DAL)

SC-2, 14 MAY 2026 to 11 JUN 2026

SC-2, 14 MAY 2026 to 11 JUN 2026