

DAYTON NINE DEPARTURE
(DAY9.DAY) 14MAY26

DAYTON, OHIO
JAMES M COX DAYTON INTL (DAY)

COLUMBUS DEP CON
118.85 305.2 (091°-180°)
134.45 323.15 (181°-090°)
ATIS
125.8
CLNC DEL
121.75
GND CON
121.9
DAYTON TOWER
119.9 257.7

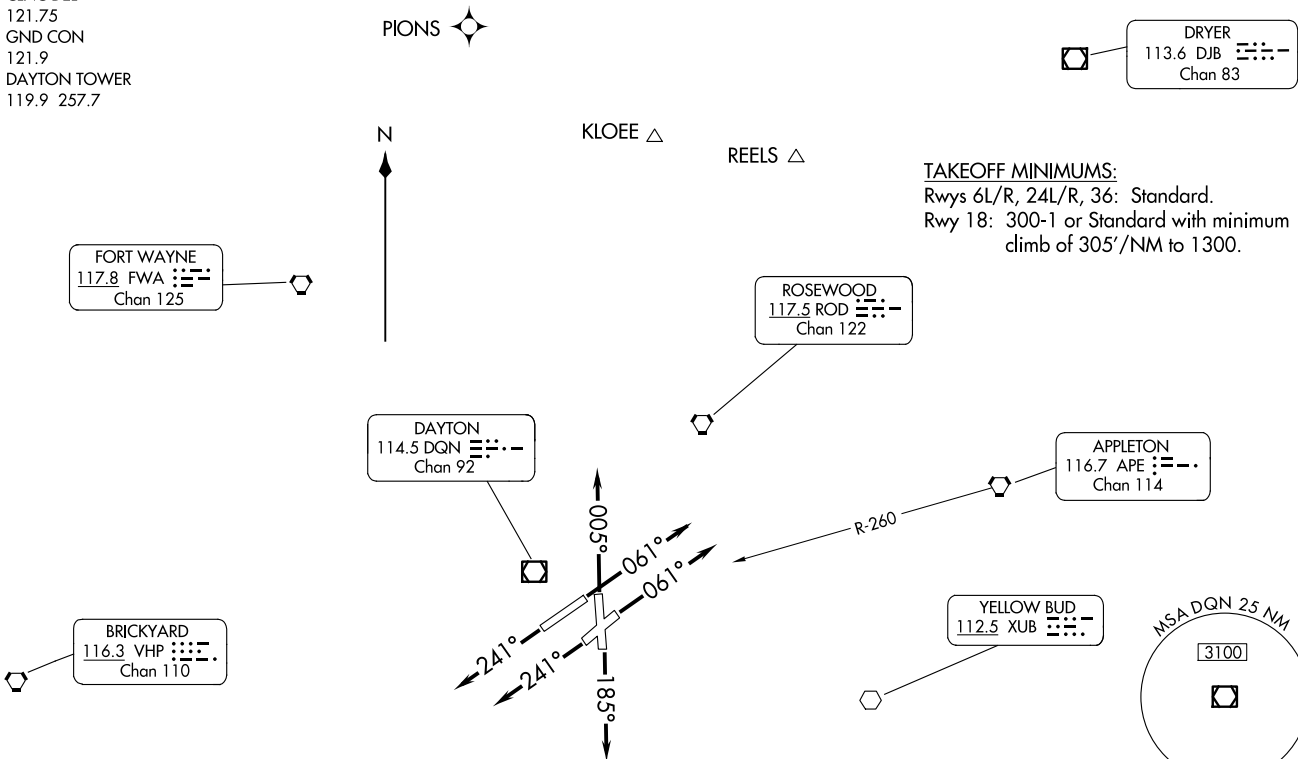
NOTE: Appropriate departure control frequency will be assigned by ATC.
NOTE: Aircraft filed over APE VORTAC, expect vectors to intercept APE R-260.

RADAR required.

TOP ALTITUDE:
5000

(DAY9.DAY) 26134
DAYTON NINE DEPARTURE
AL-107 (FAA)

JAMES M COX DAYTON INTL (DAY)
DAYTON, OHIO



NOTE: Chart not to scale.

(CONTINUED ON FOLLOWING PAGE)

DAYTON NINE DEPARTURE



DEPARTURE ROUTE DESCRIPTION

TAKEOFF RUNWAYS 6L/R: Climb on heading 061°, thence....

TAKEOFF RUNWAY 18: Climb on heading 185°, thence....

TAKEOFF RUNWAYS 24L/R: Climb on heading 241°, thence....

TAKEOFF RUNWAY 36: Climb on heading 005°, thence....

....for RADAR vectors to filed route, maintain 5000, expect requested altitude 10 minutes after departure.

EC-2, 14 MAY 2026 to 11 JUN 2026

EC-2, 14 MAY 2026 to 11 JUN 2026