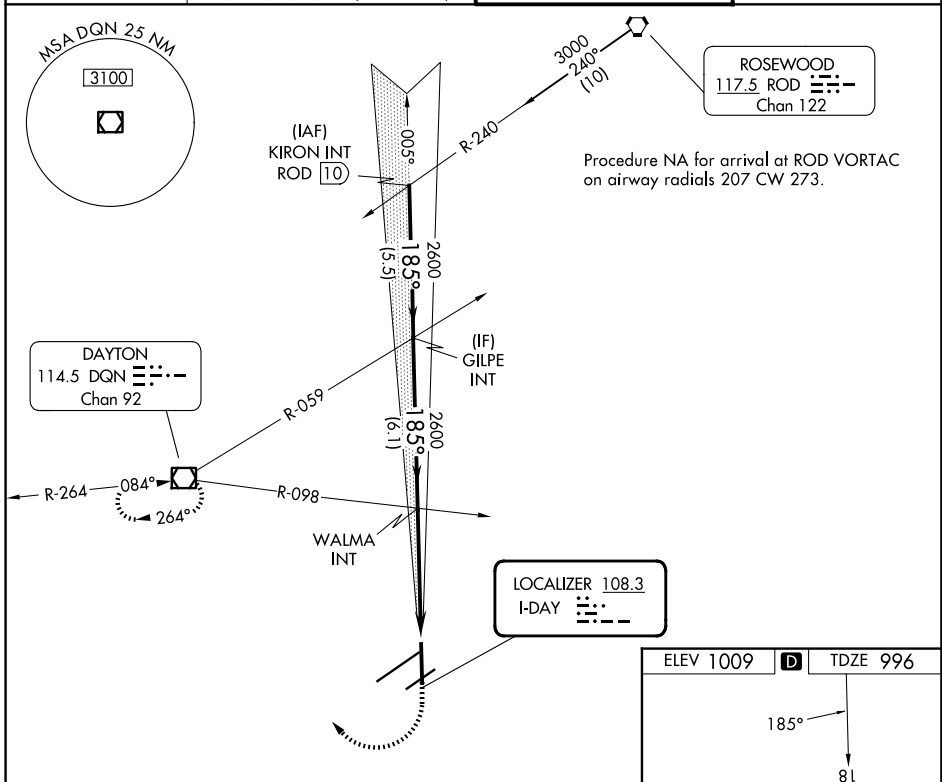


LOC I-DAY 108.3	APP CRS 185°	Rwy Ldg 8502	TDZE 996
		Apt Elev 1009	

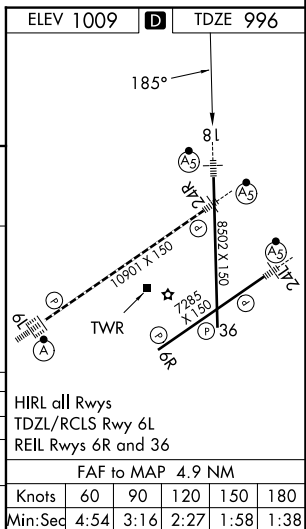
ILS or LOC RWY 18

JAMES M COX DAYTON INTL (DAY)

ATIS 125.8	COLUMBUS APP CON 118.85 305.2 (091°-180°) 134.45 323.15 (181°-090°)		DAYTON TOWER 119.9 257.7	GND CON 121.9
	MISSED APPROACH: Climb to 1400 then climbing right turn to 3100 direct DQN VOR/DME and hold.			



	KIRON INT ROD 10	GILPE INT	WALMA INT	DQN
	3000	2600	2600	1400 3100
GS 3.00° TCH 55	5.5 NM	6.1 NM	4.9 NM	
CATEGORY	A	B	C	D
S-ILS 18 **	1196/24 200 (200-½)			
S-LOC 18	1400/24	404 (400-½)	1400/40	404 (400-¾)
CIRCLING	1580-1	571 (600-1)	1580-1½	1640-2
			571 (600-1½)	631 (700-2)



EC-2, 14 MAY 2026 to 11 JUN 2026

EC-2, 14 MAY 2026 to 11 JUN 2026