

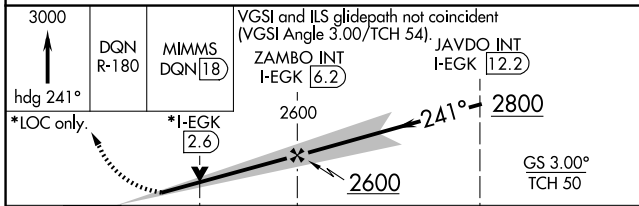
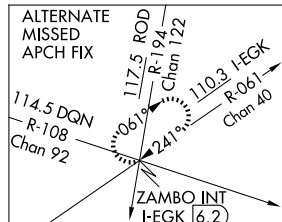
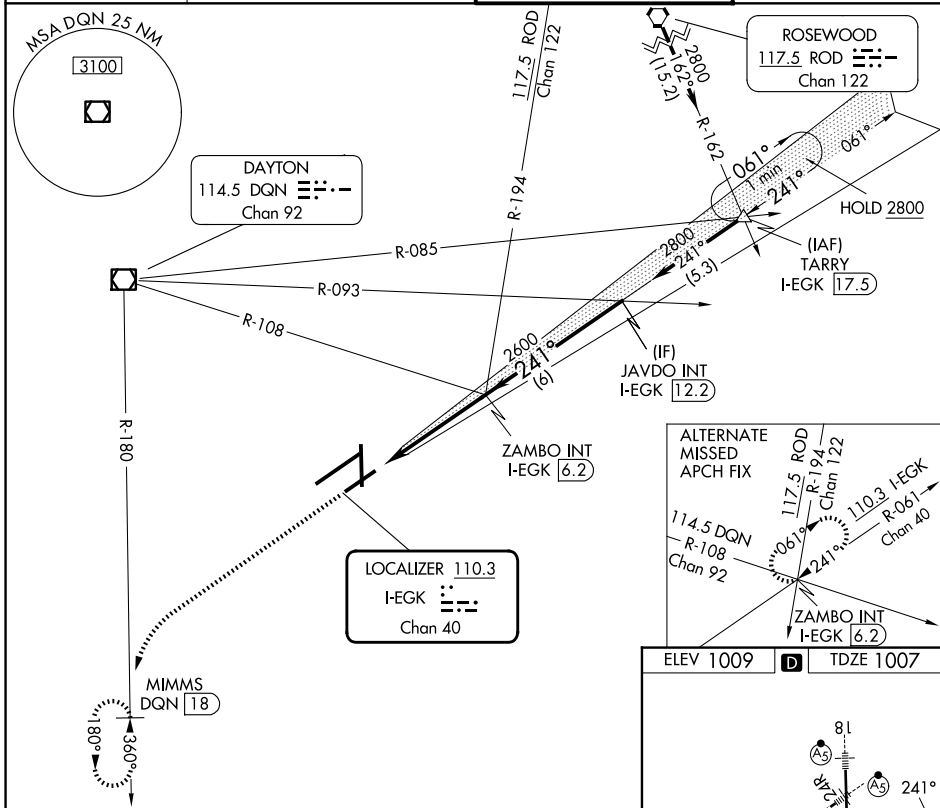
LOC I-EGK 110.3 Chan 40	APP CRS 241°	Rwy Ldg TDZE Apt Elev 7001 1007 1009
--------------------------------------	------------------------	--

ILS or LOC RWY 24L

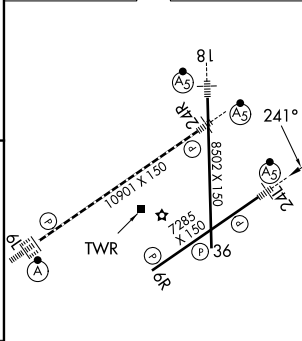
JAMES M COX DAYTON INTL (DAY)

DME required.	MALSR	MISSED APPROACH: Climb to 3000 on heading 241° and DQN R-180 to MIMMS/DQN 18 DME and hold.
Simultaneous approach authorized. # RVR 1800 authorized with use of FD or AP or HUD to DA.		

ATIS 125.8	COLUMBUS APP CON 118.85 305.2 (091°-180°) 134.45 323.15 (181°-090°)	DAYTON TOWER 119.9 257.7	GND CON 121.9
----------------------	---	------------------------------------	-------------------------



ELEV 1009	D	TDZE 1007
-----------	----------	-----------



CATEGORY	A	B	C	D
S-ILS 24L #	1207/24		200 (200-½)	
S-LOC 24L	1440/24 433 (500-½)		1440/40 433 (500-¾)	
CIRCLING	1580-1 571 (600-1)		1580-1½ 631 (700-2)	

HIRL all Rwys					
TDZL/RCLS Rwy 6L					
REIL Rwys 6R and 36					
FAF to MAP 4.9 NM					
Knots	60	90	120	150	180
Min:Sec	4:54	3:16	2:27	1:58	1:38

EC-2, 14 MAY 2026 to 11 JUN 2026

EC-2, 14 MAY 2026 to 11 JUN 2026