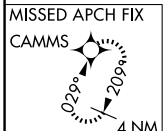
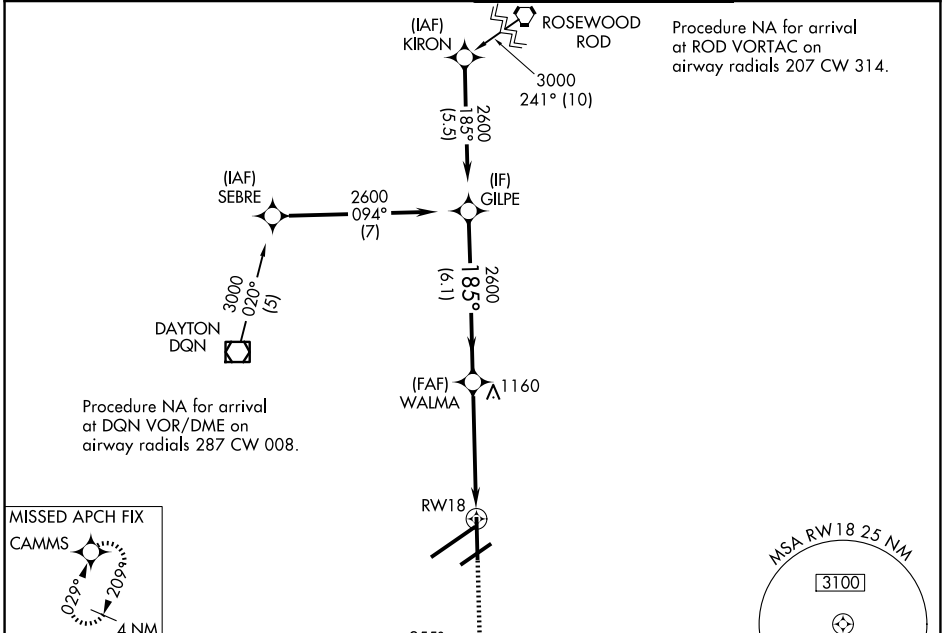


WAAS CH <b>86914</b> <b>W18A</b>	APP CRS <b>185°</b>	Rwy Ldg TDZE Apt Elev	<b>8502</b> <b>996</b> <b>1009</b>
--	------------------------	-----------------------------	--

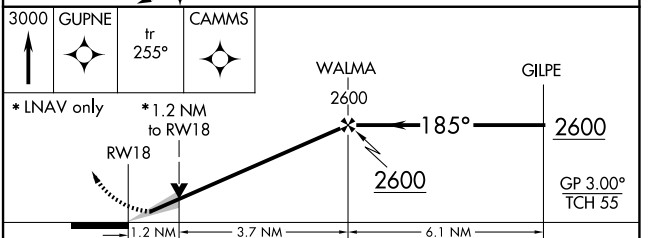
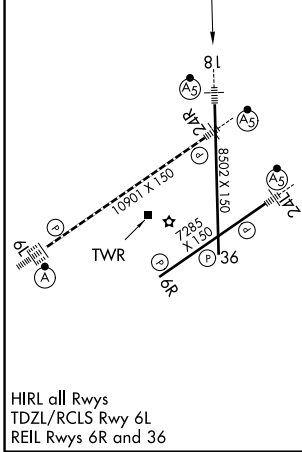
# RNAV (GPS) RWY 18

JAMES M COX DAYTON INTL (DAY)

RNP APCH.		MALSRS	MISSED APPROACH: Climb to 3000 direct GUPNE and track 255° to CAMMS and hold.
⚠ For uncompensated Baro-VNAV systems, LNAV/VNAV NA below -20°C or above 54°C. For inop ALS, increase LNAV/VNAV all Cals visibility to RVR 4500. ** RVR 1800 authorized with use of FD or AP or HUD to DA.			
ATIS <b>125.8</b>	COLUMBUS APP CON <b>118.85 305.2</b> (091°-180°) <b>134.45 323.15</b> (181°-090°)	DAYTON TOWER <b>119.9 257.7</b>	GND CON <b>121.9</b>



ELEV 1009	<b>D</b>	TDZE 996
-----------	----------	----------



CATEGORY	A	B	C	D
LPV DA **		1196/24	200 (200-½)	
LNAV/VNAV DA		1274/24	278 (300-½)	
LNAV MDA	1420/24	424 (500-½)	1420/40	424 (500-¾)
CIRCLING	1580-1	571 (600-1)	1580-1½ 571 (600-1½)	1640-2 631 (700-2)