

APP CRS <b>005°</b>	Rwy Ldg TDZE Apt Elev	<b>8502</b> <b>1008</b> <b>1009</b>
------------------------	-----------------------------	---

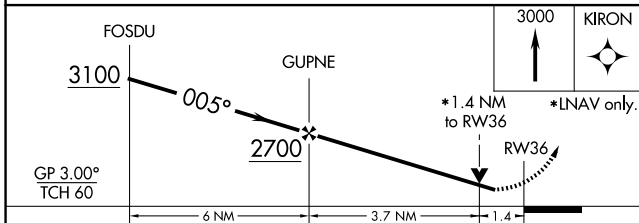
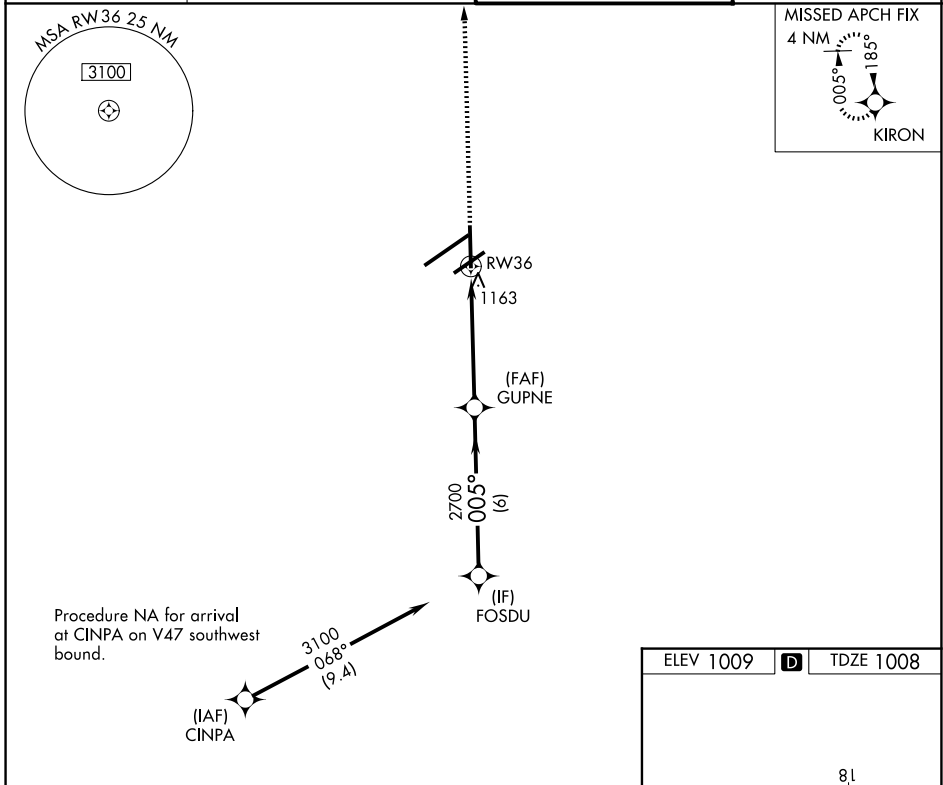
# RNAV (GPS) RWY 36

JAMES M COX DAYTON INTL (DAY)

**▽** For uncompensated Baro-VNAV systems, LNAV/VNAV NA below -19°C (-2°F) or above 54°C (130°F). DME/DME RNP-0.3 NA.  
Rwy 36 helicopter visibility reduction below ¾ SM NA.

MISSED APPROACH: Climb to 3000 direct to KIRON and hold.

ATIS <b>125.8</b>	COLUMBUS APP CON <b>118.85 305.2</b> (091°-180°) <b>134.45 323.15</b> (181°-090°)	DAYTON TOWER <b>119.9 257.7</b>	GND CON <b>121.9</b>
----------------------	---	------------------------------------	-------------------------



CATEGORY	A	B	C	D
LNAV/VNAV DA	1449-1½ 441 (500-1½)			
LNAV MDA	1500-1	492 (500-1)	1500-1¼ 492 (500-1¼)	1500-1½ 492 (500-1½)
CIRCLING	1580-1	571 (600-1)	1580-1½ 571 (600-1½)	1640-2 631 (700-2)

