

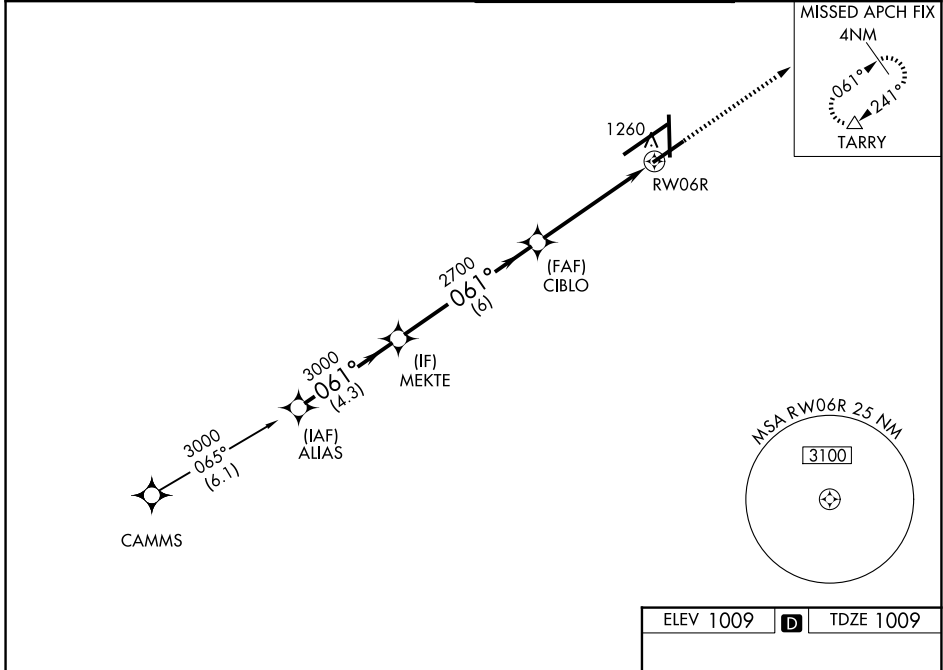
WAAS CH <b>90414</b> <b>W06B</b>	APP CRS <b>061°</b>	Rwy Ldg TDZE Apt Elev	<b>7001</b> <b>1009</b> <b>1009</b>
--	------------------------	-----------------------------	---

# RNAV (GPS) RWY 6R

JAMES M COX DAYTON INTL (DAY)

RNP APCH - GPS.	<p>▼ For uncompensated Baro-VNAV systems, LNAV/VNAV NA below -15°C or above 54°C. Rwy 6R helicopter visibility reduction below ¾ SM NA. Simultaneous approach authorized. LNAV procedure NA during simultaneous operations. Use of FD or AP required during simultaneous operations.</p>	MISSED APPROACH: Climb to 3000 direct TARRY and hold.
-----------------	--	---

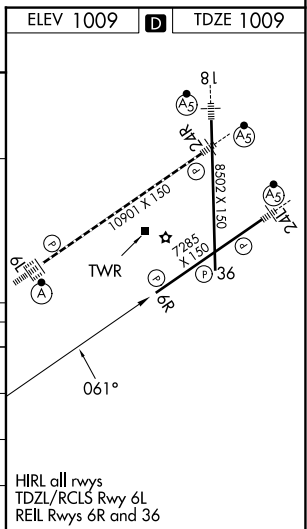
ATIS <b>125.8</b>	COLUMBUS APP CON <b>118.85 305.2</b> (091°-180°) <b>134.45 323.15</b> (181°-090°)	DAYTON TOWER <b>119.9 257.7</b>	GND CON <b>121.9</b>
----------------------	---	------------------------------------	-------------------------



VGSI and RNAV glidepath not coincident (VGSI Angle 3.00/TCH 50).

	ALIAS	MEKTE	CIBLO	RWY 6R
Altitude	3000	3000	2700	1260
Distance	4.3 NM	6 NM	3.6 NM	1.5 NM
GP	3.00°	3.00°	2.70°	1.5°
TCH	53			

CATEGORY	A	B	C	D
LPV DA		1260-¾	251 (300-¾)	
LNAV/ VNAV DA		1496-1¾	487 (500-1¾)	
LNAV MDA	1520-1	511 (600-1)	1520-1½ 511 (600-1½)	1520-1¾ 511 (600-1¾)
CIRCLING	1580-1	571 (600-1)	1580-1½ 571 (600-1½)	1640-2 631 (700-2)



EC-2, 14 MAY 2026 to 11 JUN 2026

EC-2, 14 MAY 2026 to 11 JUN 2026