

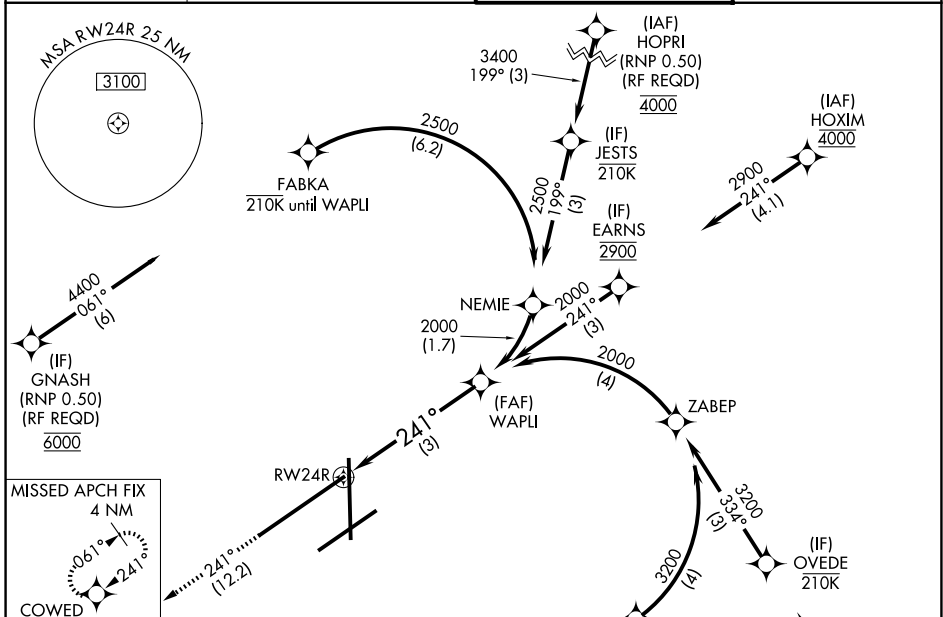
RNAV (RNP) Y RWY 24R

JAMES M COX DAYTON INTL (DAY)

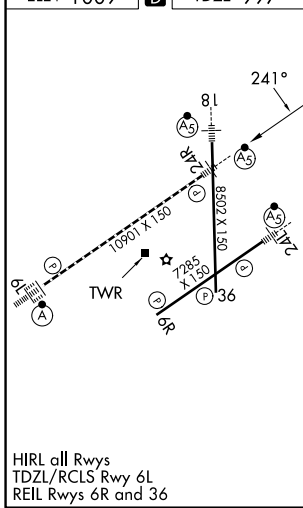
APP CRS	Rwy Ldg	10900
241°	TDZE	997
	Apf Elev	1009

RNP AR APCH.	MALSR	MISSED APPROACH: Climb to 3000 on track 241° COWED and hold.
▼ For inop ALS, increase RNP 0.10 all Cats visibility to RVR 5500 and RNP 0.30 all Cats visibility to 1 3/8 SM. For uncompensated Baro-VNAV systems, procedure NA below -19°C or above 54°C.		

ATIS	COLUMBUS APP CON	DAYTON TOWER	GND CON
125.8	118.85 305.2 (091°-180°) 134.45 323.15 (181°-090°)	119.9 257.7	121.9



ELEV 1009	D	TDZE 997
-----------	----------	----------



3000	tr	241°	See planview for multiple IF locations.	WAPLI	2000
					2000
					GP 3.00°
					TCH 55

CATEGORY	A	B	C	D
RNP 0.10 DA		1334/35	337 (400-5%)	
RNP 0.30 DA		1418/50	421 (500-1)	

AUTHORIZATION REQUIRED