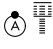


APP CRS	Rwy Ldg	10900
061°	TDZE	998
	Apt Elev	1009

RNAV (RNP) Y RWY 6L

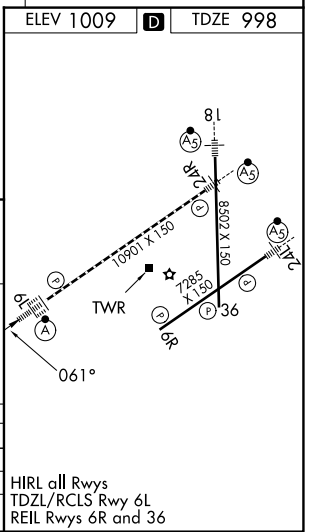
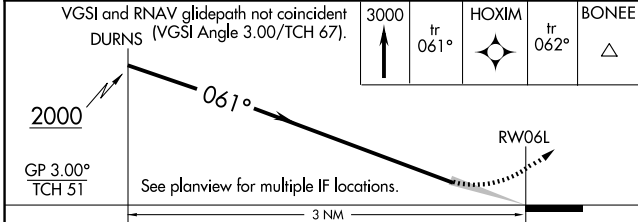
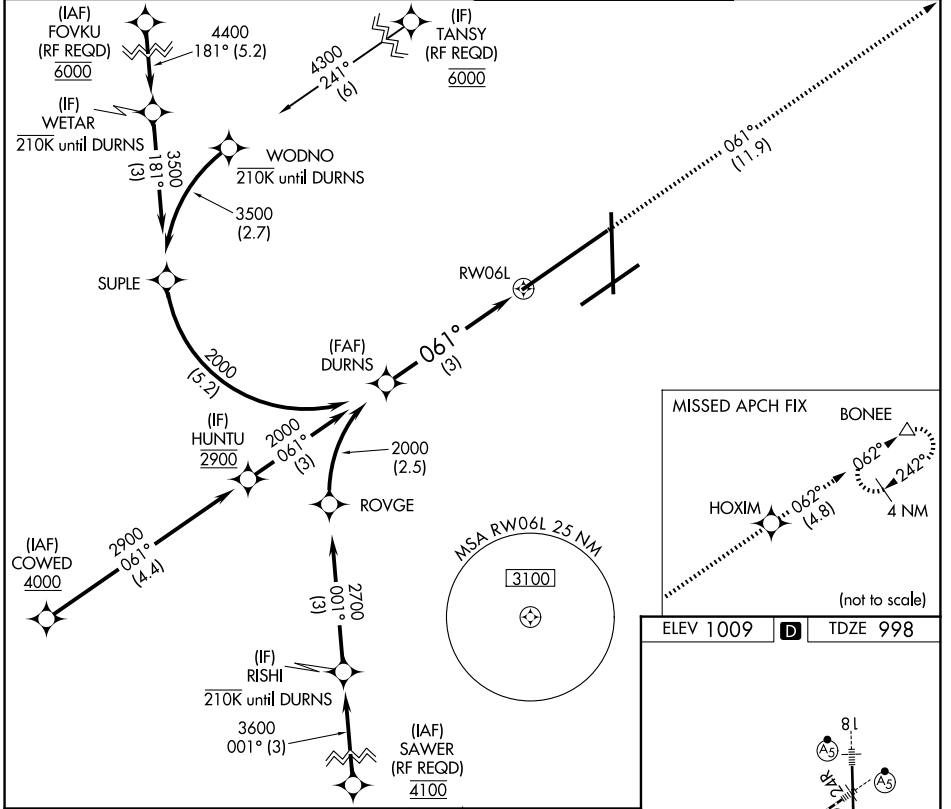
JAMES M COX DAYTON INTL (DAY)

GPS required. For uncompensated Baro-VNAV systems, procedure NA below -19°C (-2°F) or above 54°C (130°F). For inop ALS, increase RNP 0.10 all Cats visibility to RVR 6000. For inop ALS, increase RNP 0.30 all Cats visibility to 1 ½.

ALSIF-2 

MISSED APPROACH: Climb to 3000 on the RNAV missed approach route to BONEE and hold.

ATIS	COLUMBUS APP CON	DAYTON TOWER	GND CON
125.8	118.85 305.2 (091°-180°) 134.45 323.15 (181°-090°)	119.9 257.7	121.9



CATEGORY	A	B	C	D
RNP 0.10 DA		1358/40	360 (400-¾)	
RNP 0.30 DA		1464/60	466 (500-1½)	

AUTHORIZATION REQUIRED

HIRL all Rwys
TDZL/RCLS Rwy 6L
REIL Rwys 6R and 36

EC-2, 14 MAY 2026 to 11 JUN 2026

EC-2, 14 MAY 2026 to 11 JUN 2026