

DAYTON, OHIO

RNAV (GPS) RWY 23R

26078

APCH CRS	Rwy Idg	12,600
233°	TDZE	823
	Arprt Elev	823

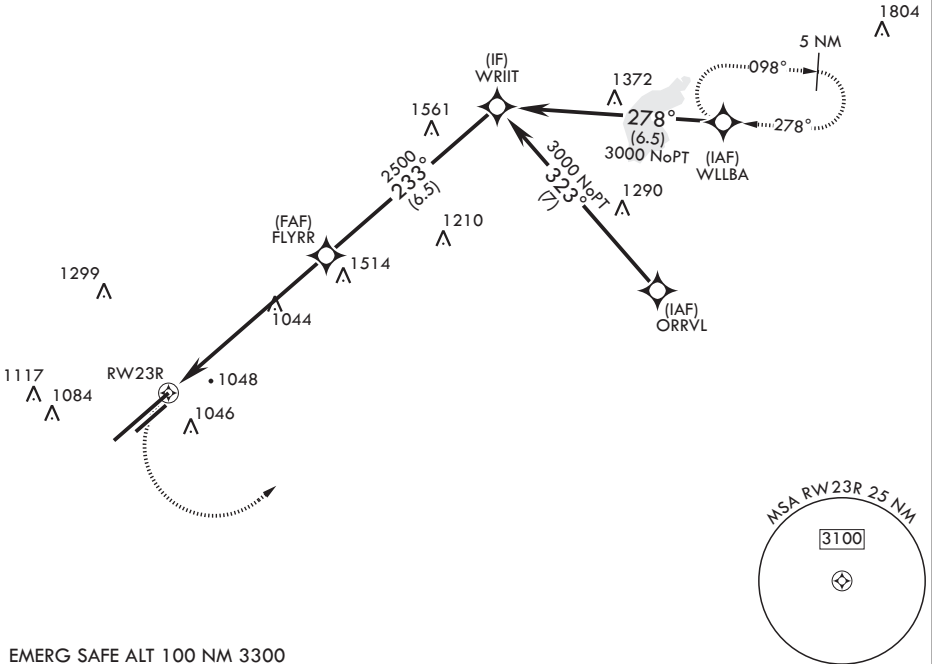
(USAF)

WRIGHT PATTERSON AFB (KFFO)

ALSIF-1 MISSED APPROACH: Turn left climb to 3000 direct WLLBA waypoint and hold.
 * When ALS inop, increase CAT AB RVR to 55, vis to 1 mile; CAT CD vis to 1 3/8 miles.
 ** When Rwy 23R VGSI inop, circling to Rwy 23R NA at night.

ATIS 124.475 269.9	COLUMBUS APP CON/DEP CON 118.85 269.275	PATTERSON TOWER 127.8 281.45	GND CON 121.8 335.8
-----------------------	--	---------------------------------	------------------------

DME/DME RNP-0.3 NA



EMERG SAFE ALT 100 NM 3300

WLLBA	VGSI and descent angles not coincident. (VGSI angle 3.00 TCH 53)	ELEV 823	TDZE 823
-------	--	----------	----------

The detailed diagram shows the final descent path. From (IF) WRIT, the path descends at 233° to (FAF) FLYRR at 2500 ft. From FLYRR, the path descends at an angle of ≤ 2.55° to RWY 23R at 1046 ft. A 1.4 NM segment is shown from FLYRR to RWY 23R. A 6 NM segment is shown from RWY 23R to FLYRR. The final descent is at 3000 ft. The runway is RWY 23R. The tower (TWR) and base (BCN) are located near the runway. The MSL for RWY 5L-23R and MRL for RWY 5R-23L is 51 ft.

CATEGORY	A	B	C	D
LNAV MDA*	1320/24	497 (500-½)	1320/50	497 (500-1)
CIRCLING**	1380-1 557 (600-1)	1440-1 617 (700-1)	1560-2 737 (800-2)	1620-2½ 797 (800-2½)

HIRL Rwy 5L-23R
MIRL Rwy 5R-23L

DAYTON, OHIO

39°50'N - 84°03'W

WRIGHT PATTERSON AFB (KFFO)

Amdt 5 13OCT16

RNAV (GPS) RWY 23R

EC-2, 14 MAY 2026 to 11 JUN 2026

EC-2, 14 MAY 2026 to 11 JUN 2026