

DAYTON, OHIO

TACAN RWY 5L

TACAN FFO Chan 29	APCH CRS 059°	Rwy Idg 12,600 TDZE 803 Arprt Elev 823
-----------------------------	-------------------------	---

[USAF]

WRIGHT-PATTERSON AFB (KFFO)

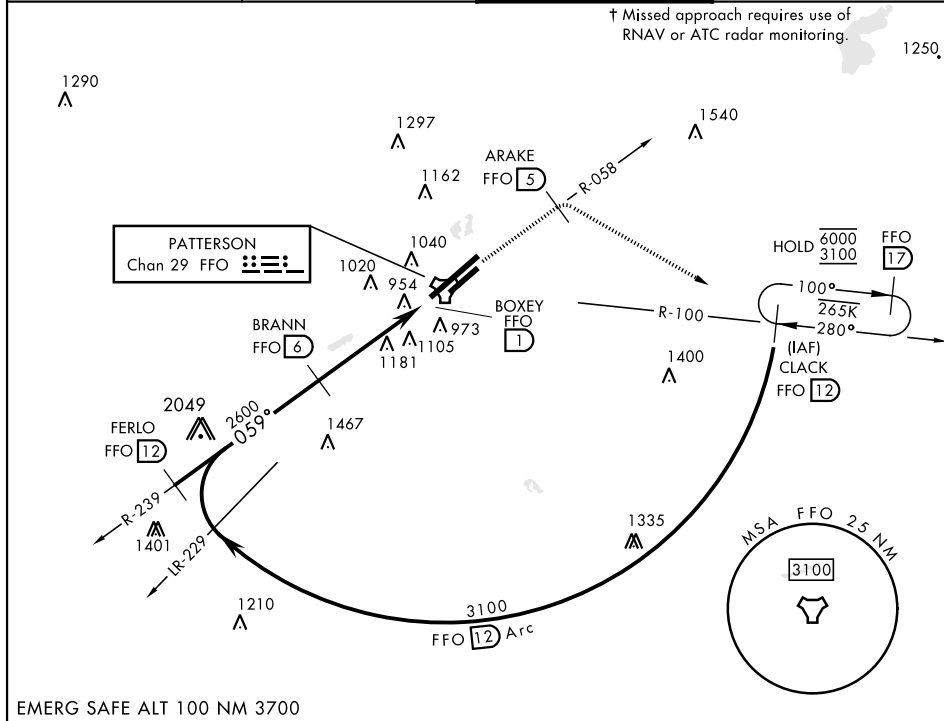
▼ * When ALS inop, increase RVR CAT AB to 55 and vis to 1 mile, CAT CDE vis to 1¾ miles.
** When Rwy 23R VGSI inop, circling to Rwy 23R NA at night.



† MISSED APPROACH: Climb to 2000 via FFO R-058 to 5 DME, turn right direct CLACK climbing to 3100 and hold.

ATIS 124.475 269.9	COLUMBUS APP CON 118.85 269.275	PATTERSON TOWER 127.8 281.45	GND CON 121.8 335.8
------------------------------	---	--	-------------------------------

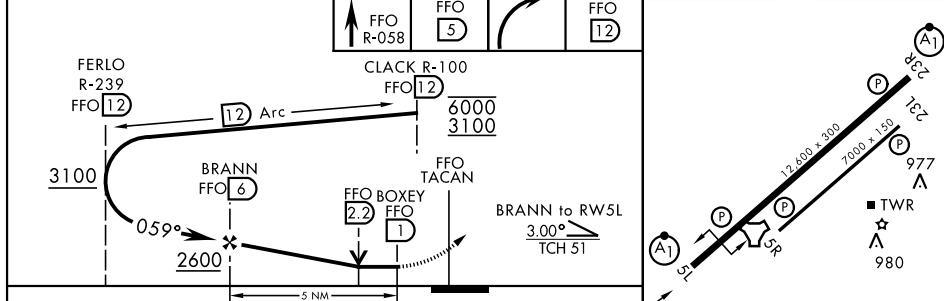
† Missed approach requires use of RNAV or ATC radar monitoring.



EC-2, 14 MAY 2026 to 11 JUN 2026

EC-2, 14 MAY 2026 to 11 JUN 2026

EMERG SAFE ALT 100 NM 3700



CATEGORY	A	B	C	D	E
S-5L *	1400/24	597 (600-½)	1400-1¼	597 (600-1¼)	
CIRCLING**	1400-1 577 (600-1)	1440-1 617 (700-1)	1560-2 737 (800-2)	1620-2½ 797 (800-2½)	1620-2¾ 797 (800-2¾)

ELEV	823	TDZE	803
------	-----	------	-----

DAYTON, OHIO
Amdt 7 05JAN17

39° 50'N-84° 03'W

WRIGHT-PATTERSON AFB (KFFO)

TACAN RWY 5L

HRL Rwy 5L-23R
MIRL Rwy 5R-23L