

DEL RIO, TEXAS

HI-ILS or LOC/DME Z RWY 13C

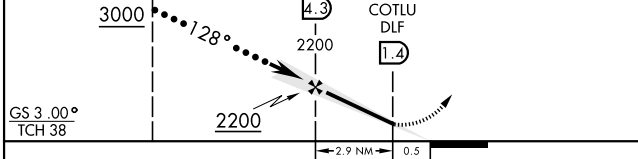
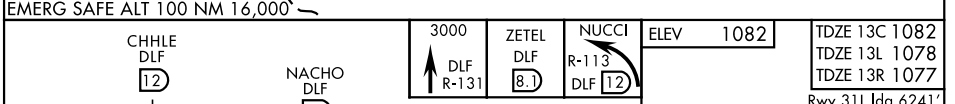
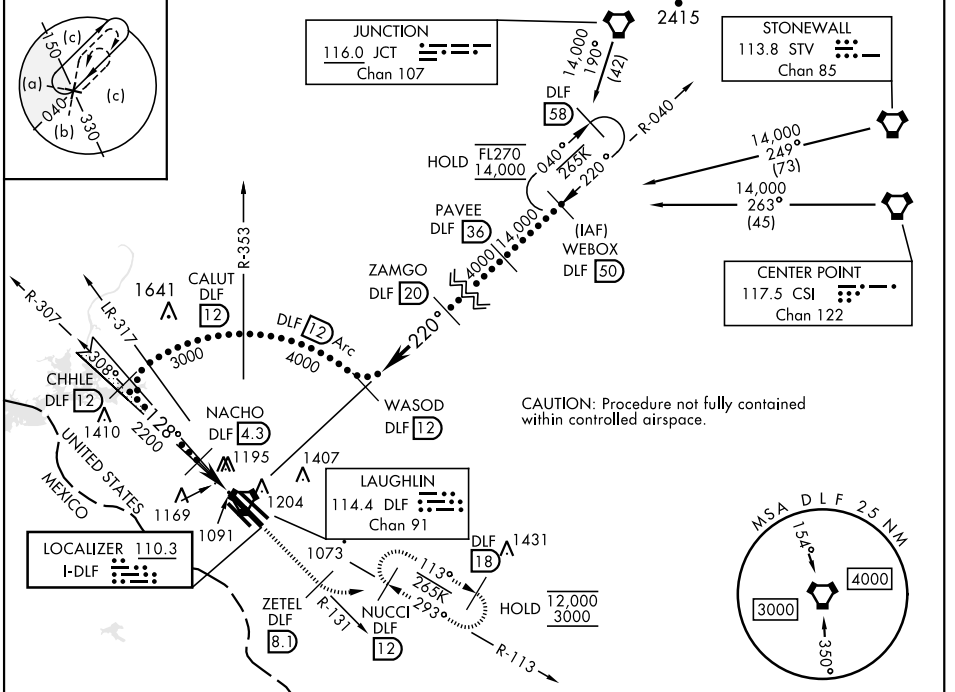
LOC I-DFL 110.3	APCH CRS 128°	Rwy Idg TDZE Arprt Elev	13C 8852	13L 8316	13R 6571
---------------------------	-------------------------	-------------------------------	--------------------	--------------------	--------------------

[USAF] LAUGHLIN AFB (KDLF)

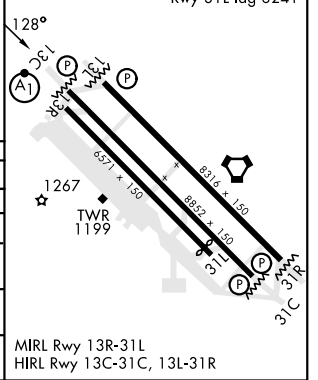
A1
ALSIF-1
MISSED APPROACH: Climb to 3000 on DLF VORTAC R-131 to 8.1 DME (ZETEL), then turn left to intercept DLF R-113 to 12 DME (NUCCI) and hold.

* When ALS inop, increase RVR to 40 and vis to ¼ mile.
 ** When ALS inop, increase CAT AB RVR to 55 and vis to 1 mile, CAT CDE RVR to 50 and vis to 1 mile.
 *** Circling W of Rwy 13R-31L not authorized.

ATIS * 114.4 269.9	DEL RIO APP CON 119.6 259.1	TOWER * 125.2 307.375	GND CON 275.8	CLNC DEL 120.5 335.8
------------------------------	---------------------------------------	---------------------------------	-------------------------	--------------------------------



CATEGORY	A	B	C	D	E
S-ILS 13C *	1282/24		200	(200-½)	
S-LOC 13C **	1420/24	338 (400-½)	1420/26		338 (400-½)
SIDESTEP 13L	1440-1	362 (400-1)	1440-1½ 362 (400-½)	1440-2	362 (400-2)
SIDESTEP 13R	1480-1	403 (400-1)	1480-1½ 403 (400-½)	1480-2	403 (400-2)
CIRCLING ***	1500-1 418 (500-1)	1540-1 458 (500-1)	1700-1¾ 618(700-1¾)	1700-2	1740-2¼ 658(700-2¼)



DEL RIO, TEXAS
 Amdt 6 20FEB25

29°22'N-100°47'W

LAUGHLIN AFB (KDLF)

HI-ILS or LOC/DME Z RWY 13C

SC-3, 14 MAY 2026 to 11 JUN 2026

SC-3, 14 MAY 2026 to 11 JUN 2026