


DEL RIO, TEXAS

# ILS or LOC/DME Y RWY 13C

LOC I-DLF <b>110.3</b>	APCH CRS <b>128°</b>	Rwy Idg <b>8852 8316 6571</b>	13C <b>1082</b>	13L <b>1078</b>	13R <b>1077</b>
		TDZE <b>1082</b>	Arprt Elev <b>1082</b>		

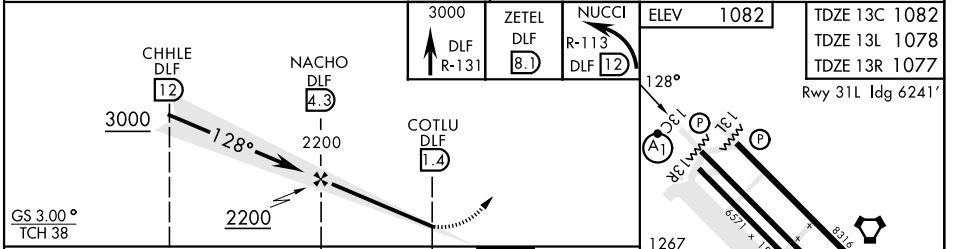
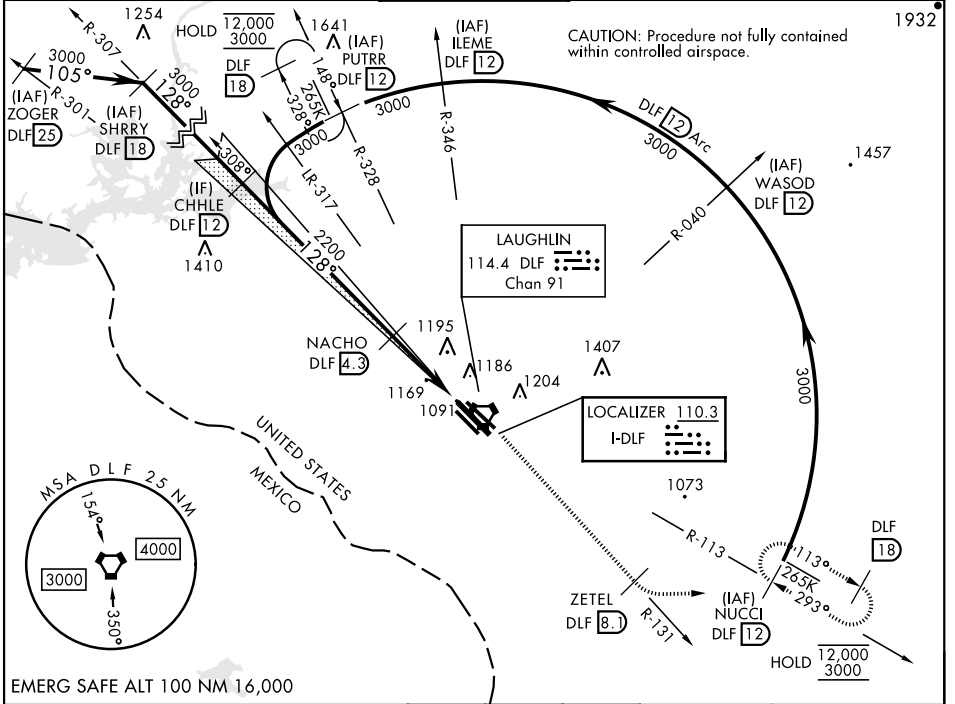
[USAF] LAUGHLIN AFB (KDLF)

**⚠** \* When ALS inop, increase RVR to 40 and vis to 3/4 mile.  
 \*\* When ALS inop, increase CAT AB RVR to 55 and vis to 1 mile, CAT CDE RVR to 50 and vis to 1 mile.  
 \*\*\* Circling W of Rwy 13R-31L not authorized.

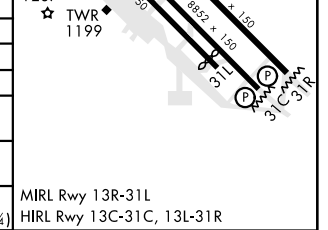
ALS-F-1 

MISSED APPROACH: Climb to 3000 on DLF VORTAC R-131 to 8.1 DME (ZETEL), then turn left to intercept DLF R-113 to 12 DME (NUCCI) and hold.

ATIS ★ <b>114.4 269.9</b>	DEL RIO APP CON <b>119.6 259.1</b>	TOWER ★ <b>125.2 307.375</b>	GND CON <b>275.8</b>	CLNC DEL <b>120.5 335.8</b>
------------------------------	---------------------------------------	---------------------------------	-------------------------	--------------------------------



CATEGORY	A	B	C	D	E
S-ILS 13C*	1282/24		200	(200-1/2)	
S-LOC 13C**	1420/24	338 (400-1/2)	1420/26	338 (400-1/2)	
SIDESTEP 13L	1440-1 362 (400-1)	1440-1 1/2 362 (400-1 1/2)		1440-2 362 (400-2)	
SIDESTEP 13R	1480-1 403 (400-1)	1480-1 1/2 403 (400-1 1/2)		1480-2 403 (400-2)	
CIRCLING ***	1500-1 418 (500-1)	1540-1 458 (500-1)	1700-1 3/4 618 (700-1 3/4)	1700-2 618 (700-2)	1740-2 1/4 658 (700-2 1/4)



DEL RIO, TEXAS

29°22'N-100°47'W

LAUGHLIN AFB (KDLF)

Amtd 6 20FEB25

# ILS or LOC/DME Y RWY 13C

SC-3, 14 MAY 2026 to 11 JUN 2026

SC-3, 14 MAY 2026 to 11 JUN 2026