

RNAV (GPS) RWY 31C

APCH CRS 308°	Rwy Idg	31C	31L	31R
	TDZE	8852	6241	8316
	Arpt Elev	1079	1080	1078
		1082		

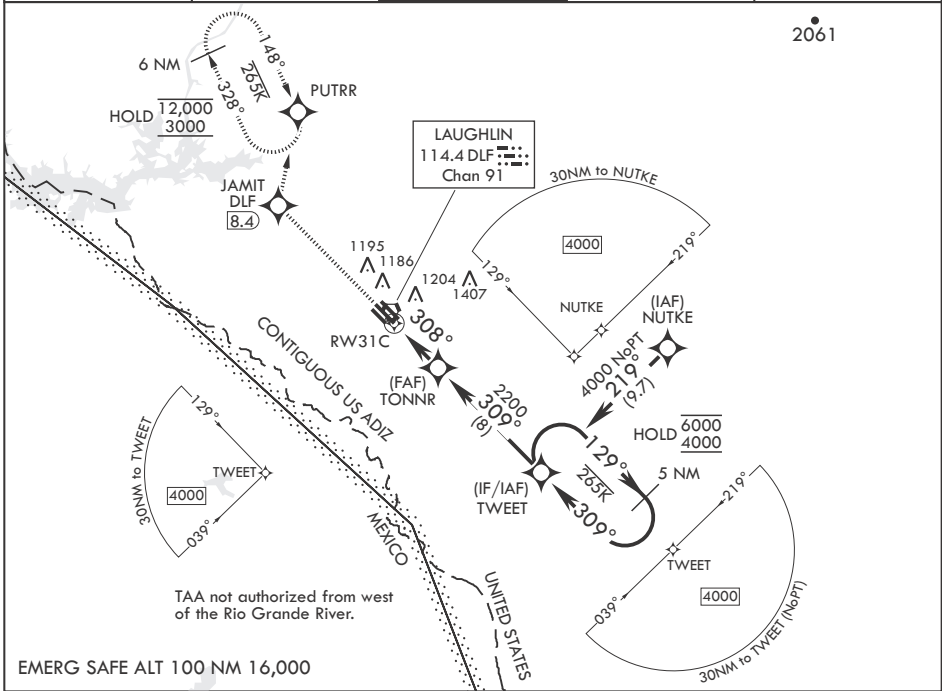
(USAF)

LAUGHLIN AFB (KDLF)

RNP APCH - GPS MISSED APPROACH: Climb to 3000 direct JAMIT, then track 005° to PUTRR and hold.

* Circling not authorized SW of Rwy 13R-31L.

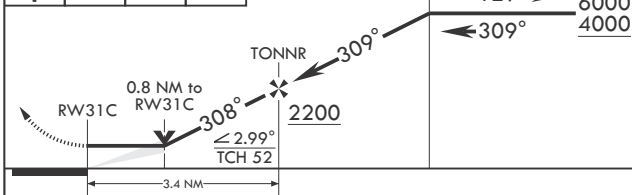
ATIS* 114.4 269.9	DEL RIO APP CON 119.6 259.1	TOWER* 125.2 307.375	GND CON 275.8	CLNC DEL 120.5 335.8
----------------------	--------------------------------	-------------------------	------------------	-------------------------



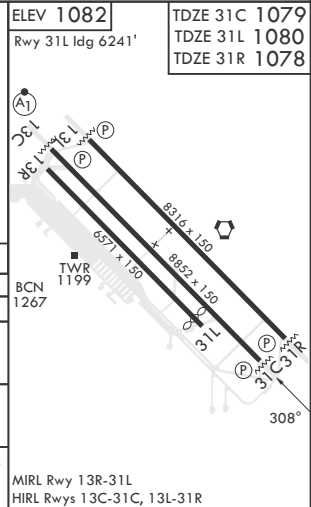
TAA not authorized from west of the Rio Grande River.

EMERG SAFE ALT 100 NM 16,000

3000	JAMIT	tr	005°	PUTRR
<p>ELEV 1082 Rwy 31L Idg 6241'</p> <p>TDZE 31C 1079</p> <p>TDZE 31L 1080</p> <p>TDZE 31R 1078</p>				



CATEGORY	A	B	C	D	E
LNAV MDA	1380-1 301 (300-1)		1380-7/8 301 (300-7/8)		
SIDESTEP31R	1380-1 302 (300-1)		1380-1½ 302 (300-1½)	1380-2 302 (300-2)	
SIDESTEP31L	1420-1 340 (400-1)		1420-1½ 340 (400-1½)	1420-2 340 (400-2)	
CIRCLING*	1500-1 418 (500-1)	1540-1 458 (500-1)	1700-1¼ 618 (700-1¼)	1700-2 618 (700-2)	1740-2¼ 658 (700-2¼)



RNAV (GPS) RWY 31C

SC-3, 14 MAY 2026 to 11 JUN 2026

SC-3, 14 MAY 2026 to 11 JUN 2026