

DES MOINES TWO DEPARTURE

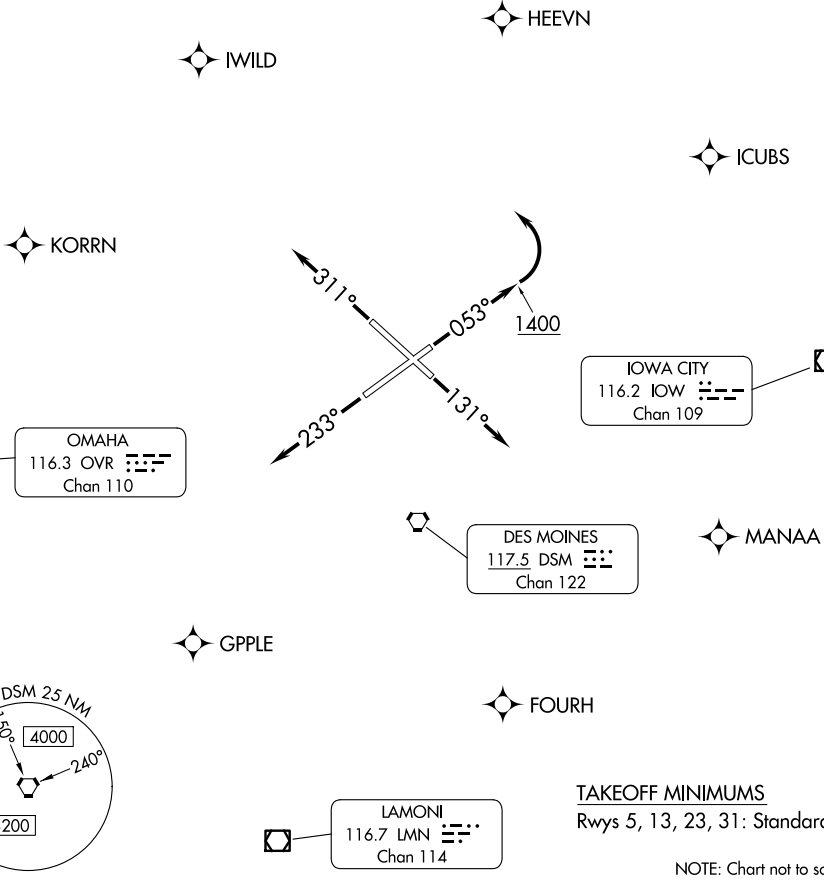
AL-117 (FAA)

DES MOINES INTL (DSM)
DES MOINES, IOWA

**TOP ALTITUDE:
5000**

For waypoints: RNAV 1 - GPS.
RADAR required.

DES MOINES DEP CON
123.9 307.15
CLNC DEL
134.15 317.55



NC-3, 14 MAY 2026 to 11 JUN 2026

NC-3, 14 MAY 2026 to 11 JUN 2026

NOTE: Chart not to scale.



DEPARTURE ROUTE DESCRIPTION

- TAKEOFF RUNWAY 5:** Climb on heading 053° to 1400 before turning left for RADAR vectors to assigned route/fix, thence
 - TAKEOFF RUNWAY 13:** Climb on heading 131° for RADAR vectors to assigned route/fix, thence
 - TAKEOFF RUNWAY 23:** Climb on heading 233° for RADAR vectors to assigned route/fix, thence
 - TAKEOFF RUNWAY 31:** Climb on heading 311° for RADAR vectors to assigned route/fix, thence
- maintain 5000. Expect clearance to filed altitude 10 minutes after departure.

DES MOINES TWO DEPARTURE