

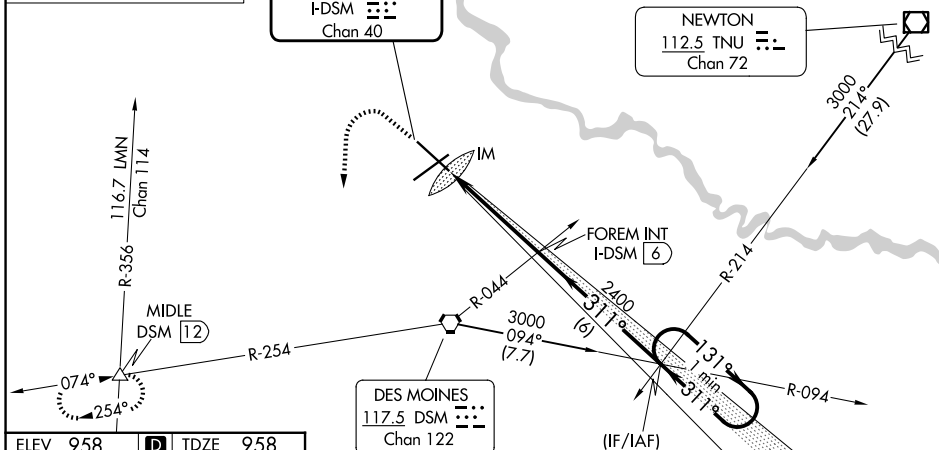
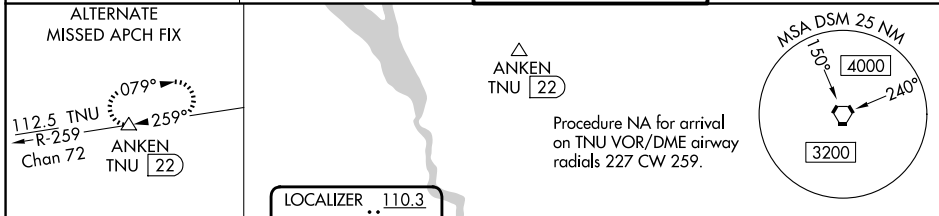
LOC/DME I-DSM <b>110.3</b> Chan 40	APP CRS <b>311°</b>	Rwy Ldg TDZE Apt Elev	<b>9001</b> <b>958</b> <b>958</b>
--	------------------------	-----------------------------	---

# ILS RWY 31 (SA CAT I)

DES MOINES INTL (DSM)

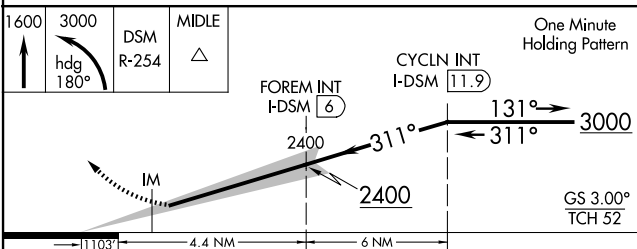
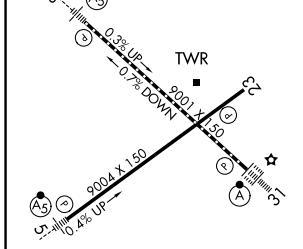
Requires specific OPSPEC, MSPEC, or LOA approval and use of HUD to DH.	ALSF-2 	MISSED APPROACH: Climb to 1600 then climbing left turn to 3000 on heading 180° and on DSM VORTAC R-254 to MIDDLE INT/12 DME and hold.
--	------------	---

ATIS <b>119.55</b>	DES MOINES APP CON <b>123.9 307.15</b>	DES MOINES TOWER <b>118.3 257.8</b>	GND CON <b>121.9 348.6</b>
-----------------------	---	--	-------------------------------



ELEV 958	<b>D</b>	TDZE 958
----------	----------	----------

Procedure NA for arrival on DSM VORTAC airway radials 042 CW 141.



CATEGORY	A	B	C	D
S-ILS 31	RA 159/14 150 DA 1108			

**SA CATEGORY I ILS-SPECIAL AIRCREW & AIRCRAFT CERTIFICATION REQUIRED**

NC-3, 14 MAY 2026 to 11 JUN 2026

NC-3, 14 MAY 2026 to 11 JUN 2026