


LOC/DME I-VGU <b>111.9</b> Chan <b>56</b>	APP CRS <b>131°</b>	Rwy Ldg TDZE Apt Elev	<b>9001</b> <b>922</b> <b>958</b>
---	------------------------	-----------------------------	---

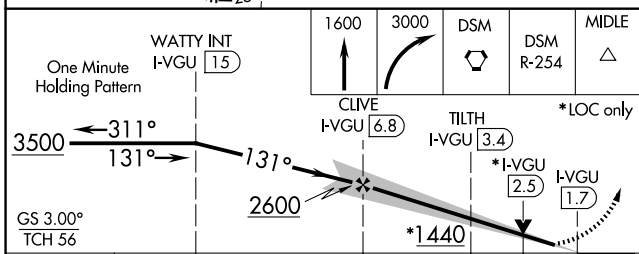
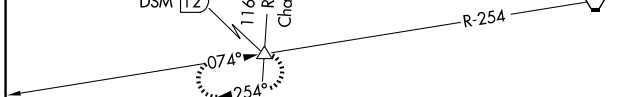
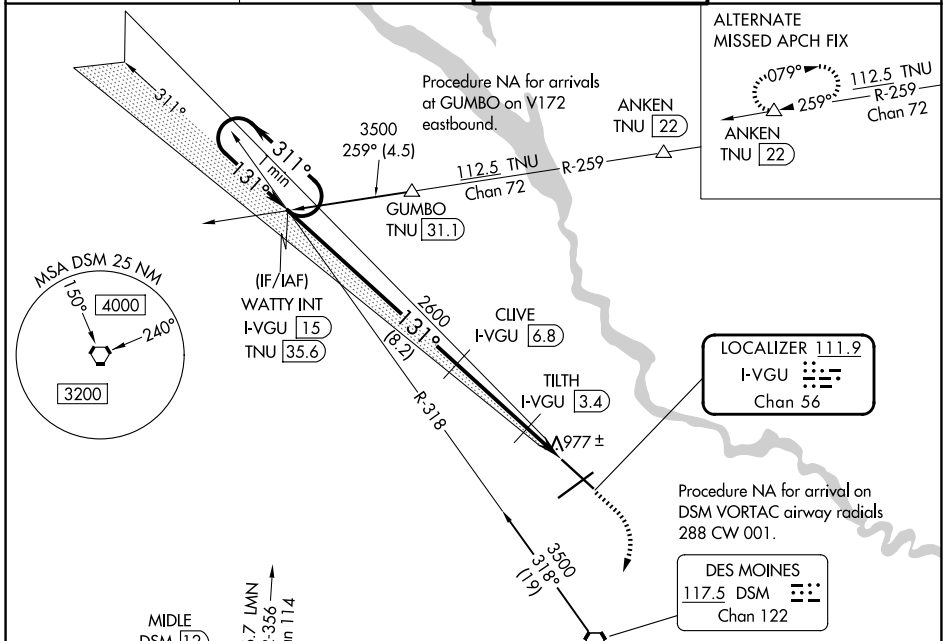
# ILS or LOC RWY 13

DES MOINES INTL (DSM)

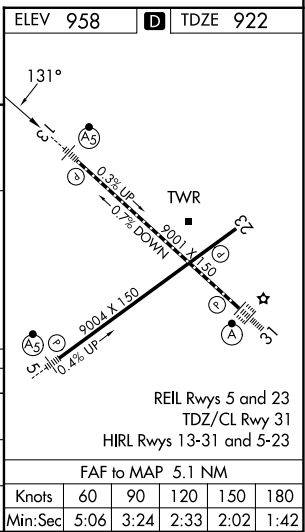
**▼** DME required. For inop ALS, increase S-LOC 13 Cats C/D visibility to RVR 4500.  
**▲** #RVR 1800 authorized with use of FD or AP or HUD to DA.

MALSR  MISSED APPROACH: Climb to 1600 then climbing right turn to 3000 direct DSM VORTAC then on DSM VORTAC R-254 to MIDDLE INT/DSM 12 DME and hold.

ATIS <b>119.55</b>	DES MOINES APP CON <b>123.9 307.15</b>	DES MOINES TOWER <b>118.3 257.8</b>	GND CON <b>121.9 348.6</b>
-----------------------	---	--	-------------------------------



CATEGORY	A	B	C	D
S-ILS 13#	1122/24 200 (200-½)			
S-LOC 13	1240/24 318 (300-½)			
CIRCLING	1420-1	462 (500-1)	1600-1¾ 642 (700-1¾)	1760-2½ 802 (900-2½)



NC-3, 14 MAY 2026 to 11 JUN 2026

NC-3, 14 MAY 2026 to 11 JUN 2026