


WAAS CH 72602 W13A	APP CRS 131°	Rwy Ldg 9001 TDZE 922 Apt Elev 958
--	------------------------	---

RNAV (GPS) RWY 13

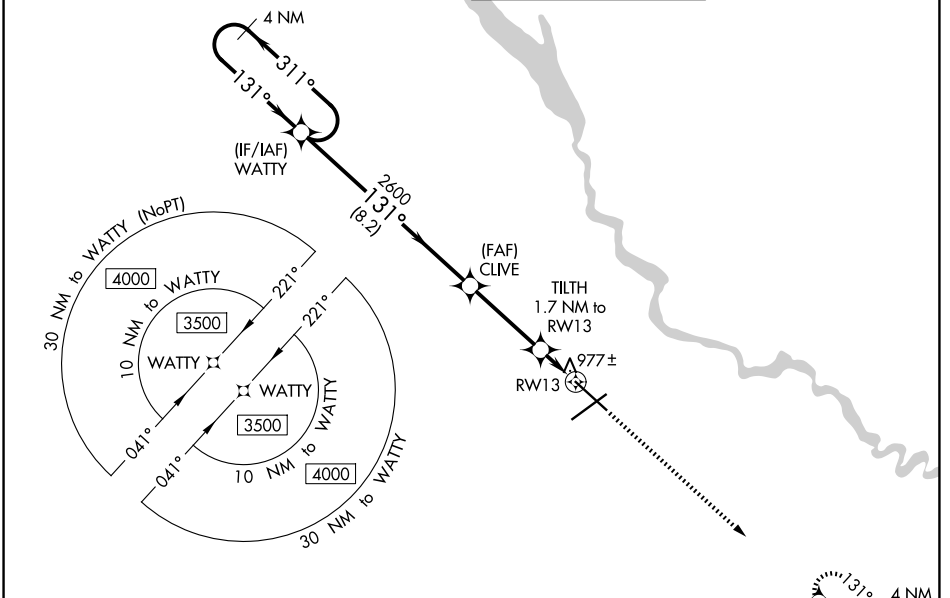
DES MOINES INTL (DSM)

⚠ For uncompensated Baro-VNAV systems, LNAV/VNAV NA below -19°C (-2°F) or above 54°C (130°F). DME/DME RNP-0.3 NA.
 For inop ALS, increase LNAV/VNAV all Cats visibility to RVR 4000 and LNAV Cats C and D visibility to RVR 4500.
 # RVR 1800 authorized with use of FD or AP or HUD to DA.

MALSR 

MISSED APPROACH: Climb to 3000 direct CYCLN and hold.

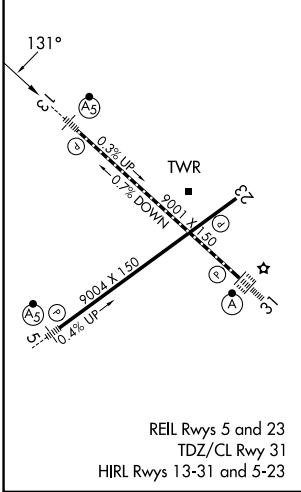
ATIS 119.55	DES MOINES APP CON 123.9 307.15	DES MOINES TOWER 118.3 257.8	GND CON 121.9 348.6
-----------------------	---	--	-------------------------------



NC-3, 14 MAY 2026 to 11 JUN 2026

NC-3, 14 MAY 2026 to 11 JUN 2026

ELEV 958	D	TDZE 922
----------	----------	----------



	WATTY		CLIVE	TILTH	3000	CYCLN
	4 NM Holding Pattern			1.7 NM to RWY13	↑	⬠
	3500	← 311°	2600			
		→ 131°				
				*0.9 NM to RWY13		*LNAV only
			*1500			
		8.2 NM	3.4 NM	0.8 NM	0.9 NM	
CATEGORY	A	B	C	D		
LPV DA#		1122/24	200 (200-½)			
LNAV/VNAV DA		1172/24	250 (300-½)			
LNAV MDA		1240/24	318 (300-½)			
CIRCLING	1420-1	462 (500-1)	1600-1¾ 642 (700-1¾)	1760-2½ 802 (900-2½)		