

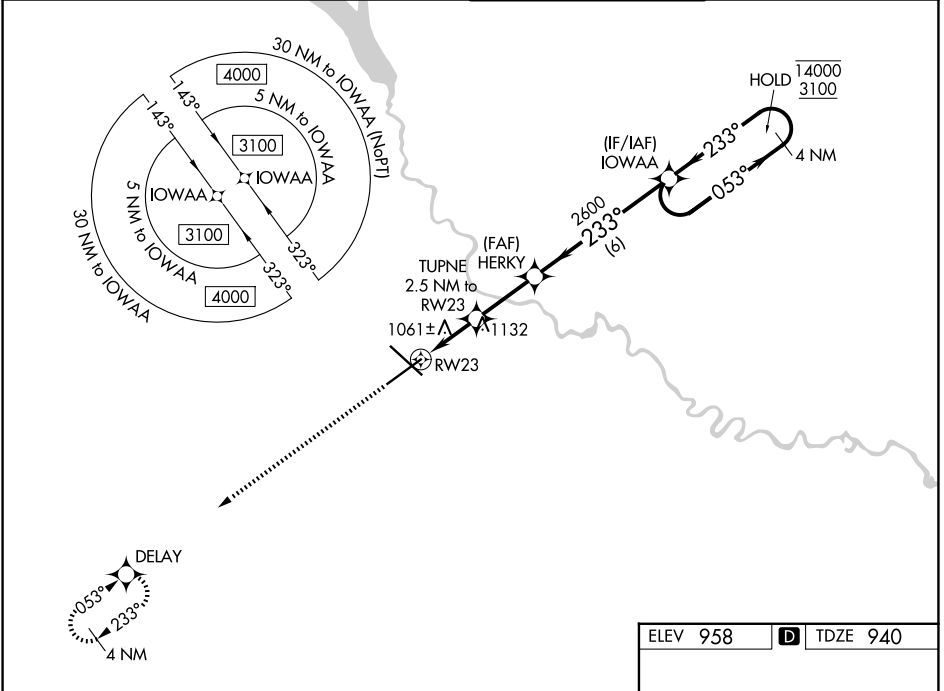
WAAS CH <b>97541</b> <b>W23A</b>	APP CRS <b>233°</b>	Rwy Ldg TDZE Apt Elev	<b>9004</b> <b>940</b> <b>958</b>
--	------------------------	-----------------------------	---

# RNAV (GPS) RWY 23

DES MOINES INTL (DSM)

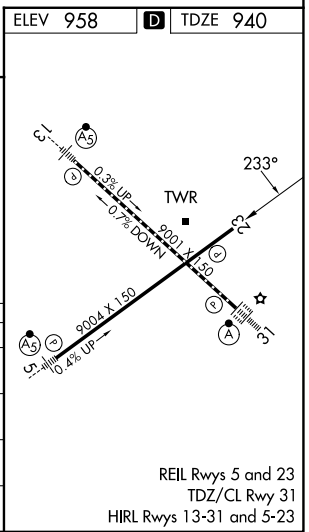
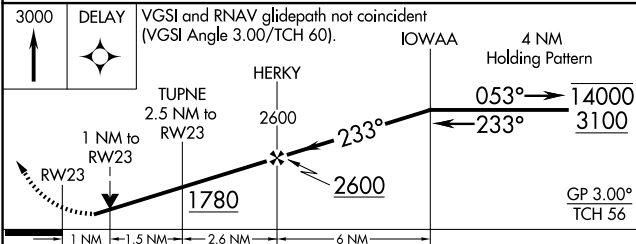
RNP APCH - GPS.		MISSED APPROACH: Climb to 3000 direct DELAY and hold.	
<p><b>▼</b> Rwy 23 helicopter visibility reduction below 3/4 SM NA. For uncompensated Baro-VNAV systems, LNAV/VNAV NA below -20°C or above 54°C.</p>			

ATIS <b>119.55</b>	DES MOINES APP CON <b>123.9 307.15</b>	DES MOINES TOWER <b>118.3 257.8</b>	GND CON <b>121.9 348.6</b>
-----------------------	---	--	-------------------------------



NC-3, 14 MAY 2026 to 11 JUN 2026

NC-3, 14 MAY 2026 to 11 JUN 2026



CATEGORY	A	B	C	D
LPV DA		1263-1	323 (400-1)	
LNAV/VNAV DA		1220-7/8	280 (300-7/8)	
LNAV MDA		1320-1	380 (400-1)	
CIRCLING	1420-1	462 (500-1)	1600-1 3/4 642 (700-1 3/4)	1760-2 1/2 802 (900-2 1/2)

REIL Rwy 5 and 23  
TDZ/CL Rwy 31  
HIRL Rwy 13-31 and 5-23