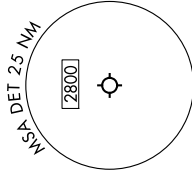
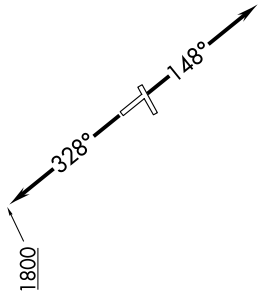


EC-1, 14 MAY 2026 to 11 JUN 2026

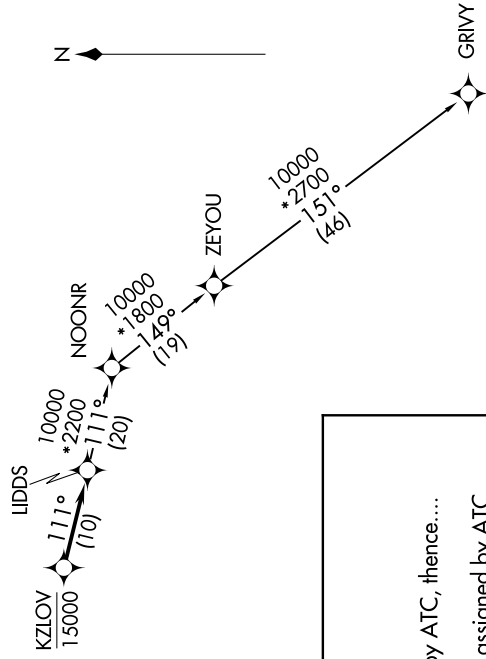
DETROIT DEP CON
134.3 284.0
ATIS
124.875
GND CON
121.85
DETROIT CITY TOWER
121.3 257.8

RNAV 1 - DME/DME/IRU or GPS.
RADAR required.
RADAR required for non-GPS equipped aircraft.

TAKEOFF MINIMUMS:
Rwys 15, 33: Standard.



NOTE: Turbojet departures at/above 10000, maintain 280K until advised by ATC.



DEPARTURE ROUTE DESCRIPTION

TAKEOFF RUNWAY 15: Climb on heading 148° or as assigned by ATC, thence....

TAKEOFF RUNWAY 33: Climb on heading 328° to 1800 then as assigned by ATC, thence....

.... for RADAR vectors to cross KZLOV at or below 15000, then on track 111° to LIDDS, then on (transition). Maintain ATC assigned altitude, expect filed altitude 10 minutes after departure.

GRIVY TRANSITION (LIDDS4.GRIVY):

NOTE: Chart not to scale.

EC-1, 14 MAY 2026 to 11 JUN 2026