

EC-1, 14 MAY 2026 to 11 JUN 2026

EC-1, 14 MAY 2026 to 11 JUN 2026

DEPARTURE ROUTE DESCRIPTION

TAKEOFF RUNWAY 15: Climb on heading 148° or as assigned by ATC, thence...
TAKEOFF RUNWAY 33: Climb on heading 328° to 1800 then as assigned by ATC, thence....

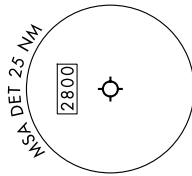
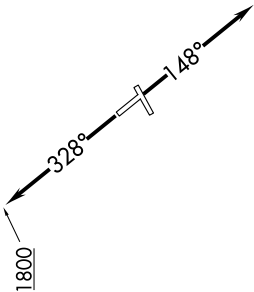
....for RADAR vectors to JWELS, then on track 218° to SNDRS, then on (transition). Maintain ATC assigned altitude, expect filed altitude 10 minutes after departure.

BGHR T TRANSITION (SNDRS3.BGHR T):
TORR T TRANSITION (SNDRS3.TORR T):

TOP ALTITUDE:
ASSIGNED BY ATC

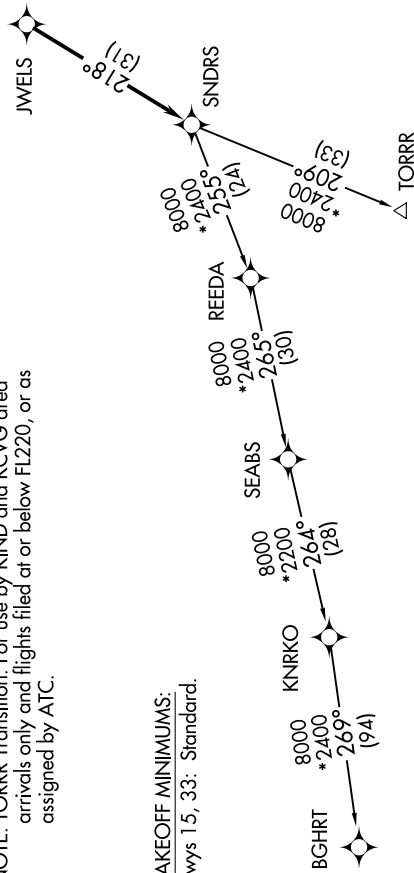
RNAV-1 DME/DME/IRU or GPS.
RADAR required.

DETROIT DEP CON
134.3 284.0
ATIS
124.875
GND CON
121.85
DETROIT CITY TOWER
121.3 257.8



NOTE: Turbojet departures at/above 10000, maintain 280K until advised by ATC.
NOTE: TORR Transition: For use by KIND and KCVG area arrivals only and flights filed at or below FL220, or as assigned by ATC.

TAKEOFF MINIMUMS:
Rwys 15, 33: Standard.



NOTE: Chart not to scale.