

(TRMML4.TRMML) 24137

TRMML FOUR DEPARTURE (RNAV)

AL-118 (FAA)

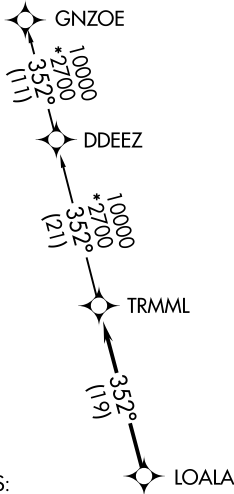
COLEMAN A YOUNG MUNI (DET)

DETROIT, MICHIGAN

**TOP ALTITUDE:
ASSIGNED BY ATC**

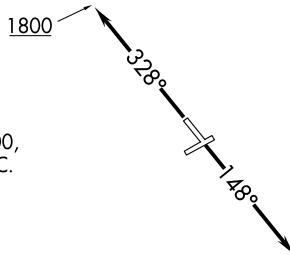
RNAV 1 - DME/DME/IRU or GPS.
RADAR required.

DETROIT DEP CON
134.3 284.0
ATIS
124.875
GND CON
121.85
DETROIT CITY TOWER
121.3 257.8



TAKEOFF MINIMUMS:
Rwys 15, 33: Standard.

NOTE: Turbojet departures at/above 10000,
maintain 280K until advised by ATC.



NOTE: Chart not to scale.

DEPARTURE ROUTE DESCRIPTION

TAKEOFF RUNWAY 15: Climb on heading 148° or as assigned by ATC,
thence....

TAKEOFF RUNWAY 33: Climb on heading 328° to 1800 then as assigned by ATC,
thence....

...for RADAR vectors to LOALA, then on track 352° to TRMML, then on (transition).
Maintain ATC assigned altitude, expect filed altitude 10 minutes after departure.

GNZOE TRANSITION (TRMML4.GNZOE):

TRMML FOUR DEPARTURE (RNAV)

(TRMML4.TRMML) 16MAY24

DETROIT, MICHIGAN
COLEMAN A YOUNG MUNI (DET)

EC-1, 14 MAY 2026 to 11 JUN 2026

EC-1, 14 MAY 2026 to 11 JUN 2026