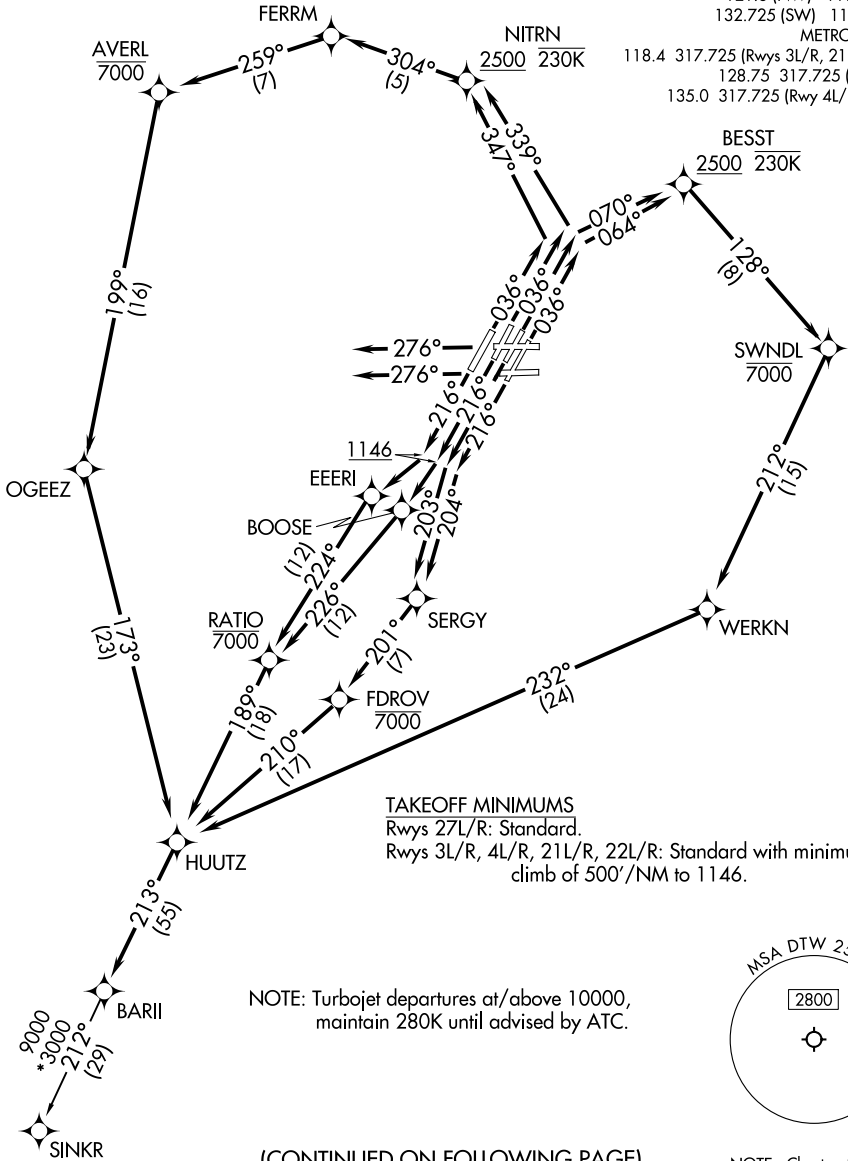


# BARII THREE DEPARTURE (RNAV)

**TOP ALTITUDE:**  
**17000**

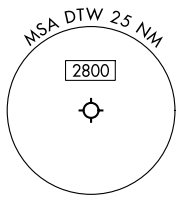
RNAV 1 - DME/DME/IRU or GPS.  
RADAR required.

DETROIT DEP CON  
 125.525 284.0 (Rwys 4L/R, 22L/R)  
 132.025 284.0 (Rwys 3L/R, 21L/R, 27L/R)  
 D-ATIS 118.125  
 CLNC DEL 120.65  
 CPDLC  
 GND CON  
 121.8 (NW) 119.45 (NE)  
 132.725 (SW) 119.25 (SE)  
 METRO TOWER  
 118.4 317.725 (Rwys 3L/R, 21L/R, 27R)  
 128.75 317.725 (Rwy 27L)  
 135.0 317.725 (Rwy 4L/R, 22L/R)



**TAKEOFF MINIMUMS**  
 Rwys 27L/R: Standard.  
 Rwys 3L/R, 4L/R, 21L/R, 22L/R: Standard with minimum  
 climb of 500'/NM to 1146.

NOTE: Turbojet departures at/above 10000,  
 maintain 280K until advised by ATC.



(CONTINUED ON FOLLOWING PAGE)

NOTE: Chart not to scale.

EC-1, 14 MAY 2026 to 11 JUN 2026

EC-1, 14 MAY 2026 to 11 JUN 2026

# BARII THREE DEPARTURE (RNAV)



DEPARTURE ROUTE DESCRIPTION

SEE ADDITIONAL REQUIREMENTS ON AAUP

TAKEOFF RUNWAY 3L: Climb on heading 036° to intercept course 070° to cross BESST at or above 2500 and at or below 230K, then on track 128° to cross SWNDL at or below 7000, then on track 212° to WERKN, then on track 232° to HUUTZ, thence . . . .

TAKEOFF RUNWAY 3R: Climb on heading 036° to intercept course 064° to cross BESST at or above 2500 and at or below 230K, then on track 128° to cross SWNDL at or below 7000, then on track 212° to WERKN, then on track 232° to HUUTZ, thence . . . .

TAKEOFF RUNWAY 4L: Climb on heading 036° to intercept course 347° to cross NITRN at or above 2500 and at or below 230K, then on track 304° to FERRM, then on track 259° to cross AVERL at or below 7000, then on track 199° to OGEEZ, then on track 173° to HUUTZ, thence . . . .

TAKEOFF RUNWAY 4R: Climb on heading 036° to intercept course 339° to cross NITRN at or above 2500 and at or below 230K, then on track 304° to FERRM, then on track 259° to cross AVERL at or below 7000, then on track 199° to OGEEZ, then on track 173° to HUUTZ, thence . . . .

TAKEOFF RUNWAY 21L: Climb on heading 216° to intercept course 204° to SERGY, then on track 201° to cross FDROV at or below 7000, then on track 210° to HUUTZ, thence . . . .

TAKEOFF RUNWAY 21R: Climb on heading 216° to intercept course 203° to SERGY, then on track 201° to cross FDROV at or below 7000, then on track 210° to HUUTZ, thence . . . .

TAKEOFF RUNWAY 22L: Climb on heading 216° to 1146, then direct BOOSE, then on track 226° to cross RATIO at or below 7000, then on track 189° to HUUTZ, thence . . . .

TAKEOFF RUNWAY 22R: Climb on heading 216° to 1146, then direct EEERI, then on track 224° to cross RATIO at or below 7000, then on track 189° to HUUTZ, thence . . . .

TAKEOFF RUNWAYS 27L/R: Climb on heading 276° or as assigned by ATC, for RADAR vectors to HUUTZ, thence . . . .

. . . . on track 213° to BARI, then on (transition). Maintain 17000, expect filed altitude 10 minutes after departure.

SINKR TRANSITION (BARI3.SINKR)

EC-1, 14 MAY 2026 to 11 JUN 2026

EC-1, 14 MAY 2026 to 11 JUN 2026