

EC-1, 14 MAY 2026 to 11 JUN 2026

D-ATIS
133.675
DETROIT APP CON
126.225 284.0

NOTE: RADAR required.

NOTE: RNAV 1.

NOTE: DME/DME/IRU or GPS required.

NOTE: Use Rwy 3R Transition or as assigned by ATC.

NOTE: Expect runway assignment from Detroit APP CON

no later than 10 NM from CUUGR.

NOTE: Jet aircraft descend via Mach number until intercepting 280K. Maintain 280K until slowed by the STAR.

NOTE: For use when DTW landing north. When DTW landing south or west, file and expect the TPGUN RNAV STAR.

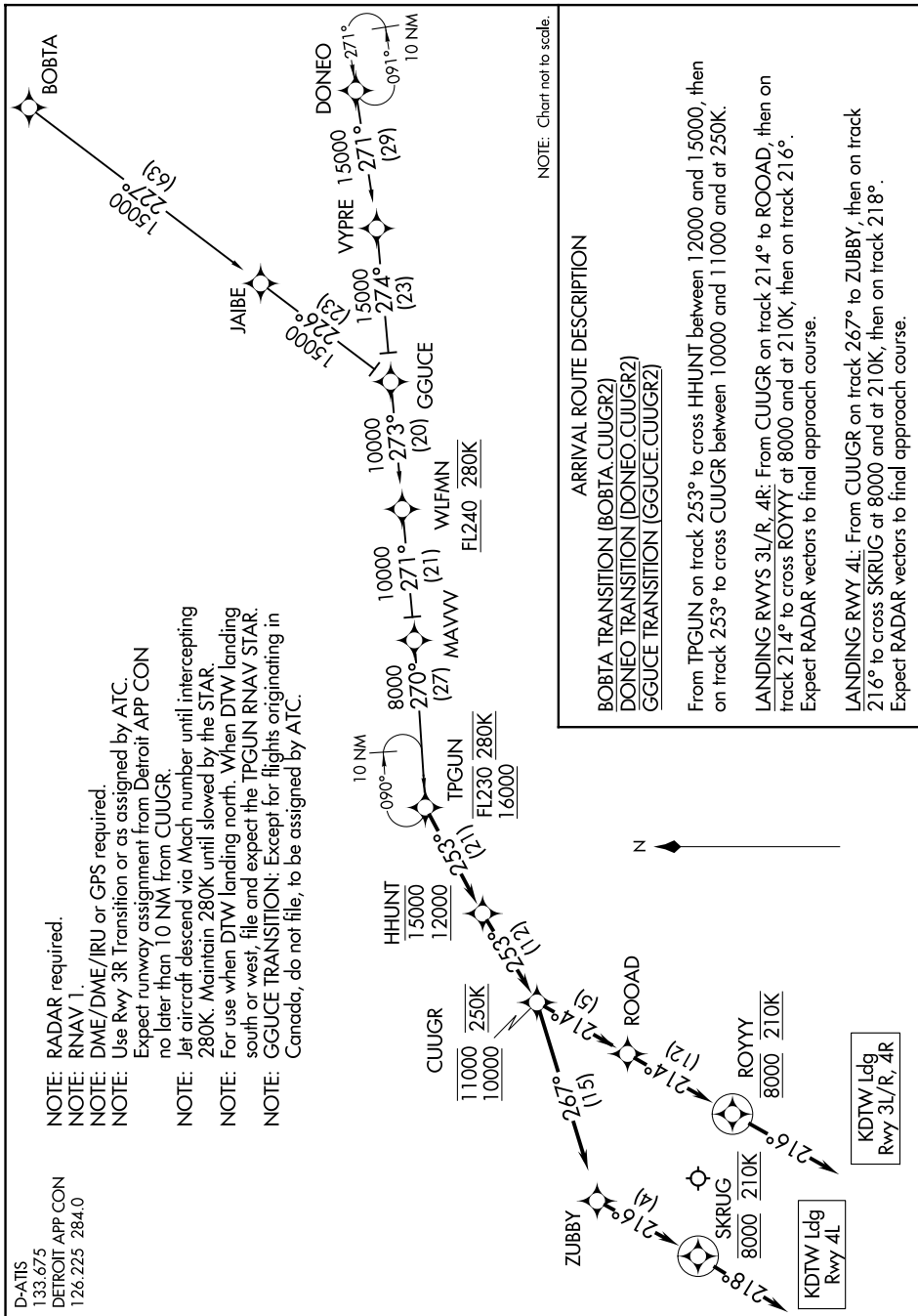
NOTE: GGUCE TRANSITION: Except for flights originating in Canada, do not file, to be assigned by ATC.

CUUGR TWO ARRIVAL (RNAV)

(TPGUN.CUUGR2) 10OCT19

DETROIT, MICHIGAN

DETROIT METRO WAYNE COUNTY (DTW)



NOTE: Chart not to scale.

ARRIVAL ROUTE DESCRIPTION

BOBTA TRANSITION (BOBTA.CUUGR2)

DONEO TRANSITION (DONEO.CUUGR2)

GGUCE TRANSITION (GGUCE.CUUGR2)

From TPGUN on track 253° to cross HHUNT between 12000 and 15000, then on track 253° to cross CUUGR between 10000 and 11000 and at 250K.

LANDING RWYS 3L/R, 4R: From CUUGR on track 214° to ROOAD, then on track 214° to cross ROYY at 8000 and at 210K, then on track 216°.

Expect RADAR vectors to final approach course.

LANDING RWY 4L: From CUUGR on track 267° to ZUBBY, then on track 216° to cross SKRUG at 8000 and at 210K, then on track 218°.

Expect RADAR vectors to final approach course.

EC-1, 14 MAY 2026 to 11 JUN 2026