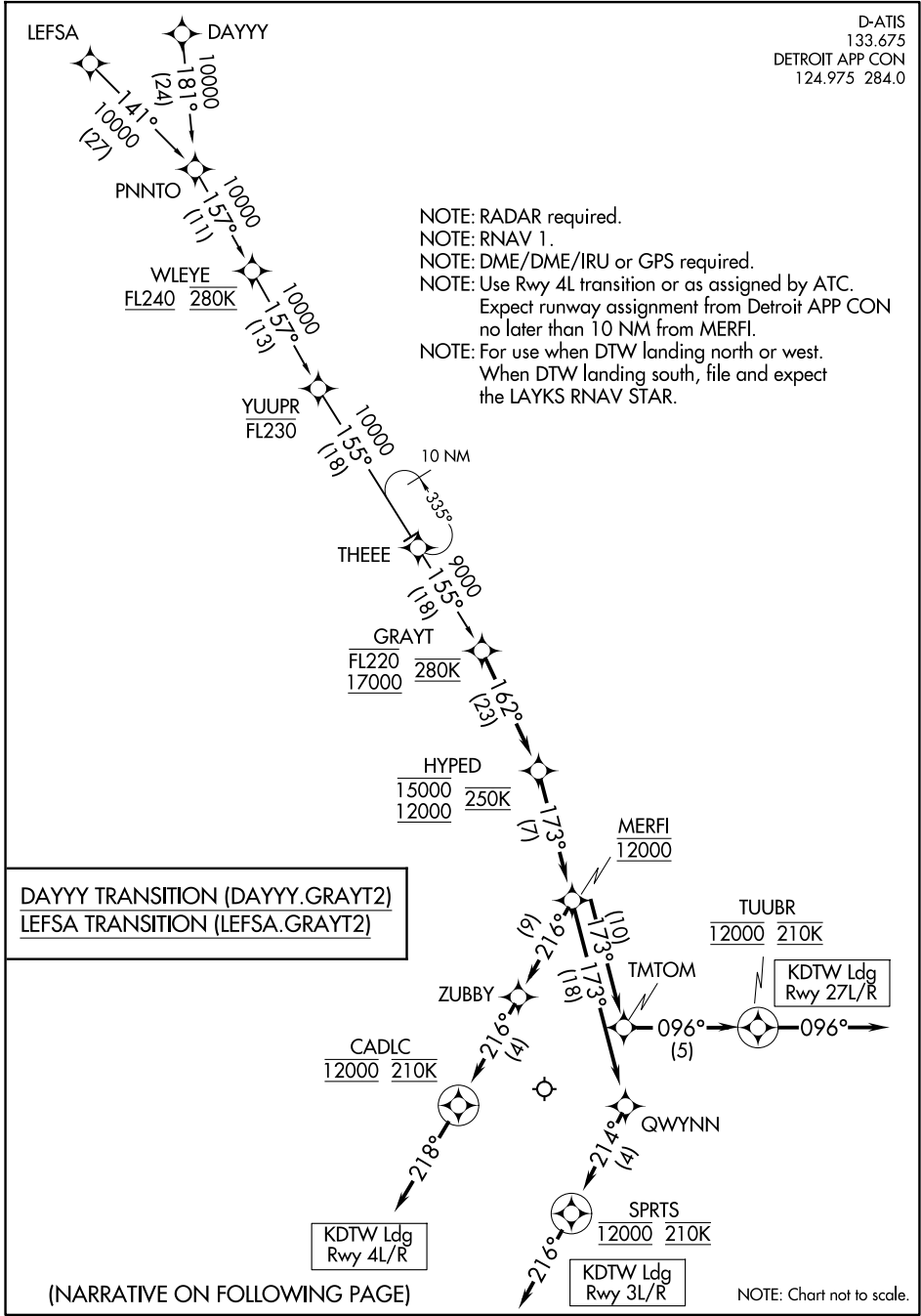


GRAYT TWO ARRIVAL (RNAV)

D-ATIS
133.675
DETROIT APP CON
124.975 284.0

- NOTE: RADAR required.
- NOTE: RNAV 1.
- NOTE: DME/DME/IRU or GPS required.
- NOTE: Use Rwy 4L transition or as assigned by ATC.
Expect runway assignment from Detroit APP CON no later than 10 NM from MERFI.
- NOTE: For use when DTW landing north or west.
When DTW landing south, file and expect the LAYKS RNAV STAR.



DAYYY TRANSITION (DAYYY.GRAYT2)
LEFSA TRANSITION (LEFSA.GRAYT2)

(NARRATIVE ON FOLLOWING PAGE)

NOTE: Chart not to scale.

GRAYT TWO ARRIVAL (RNAV)

(GRAYT.GRAYT2) 10OCT19

EC-1, 14 MAY 2026 to 11 JUN 2026

EC-1, 14 MAY 2026 to 11 JUN 2026

GRAYT TWO ARRIVAL (RNAV)

ARRIVAL ROUTE DESCRIPTION

From GRAYT on track 162° to cross HYPED between 12000 and 15000 and at 250K, then on track 173° to cross MERFI at 12000.

LANDING RWY 3L/R: From MERFI on track 173° to QWYNN, then on track 214° to cross SPRTS at 12000 and at 210K, then on track 216°. Expect RADAR vectors to final approach course.

LANDING RWY 4L/R: From MERFI on track 216° to ZUBBY, then on track 216° to cross CADLC at 12000 and at 210K, then on track 218°. Expect RADAR vectors to final approach course.

LANDING RWY 27L/R: From MERFI on track 173° to TMTOM, then on track 096° to cross TUUBR at 12000 and at 210K, then on track 096°. Expect RADAR vectors to final approach course.

EC-1, 14 MAY 2026 to 11 JUN 2026

EC-1, 14 MAY 2026 to 11 JUN 2026