

LOC/DME I-DWC 110.7 Chan 44	APP CRS 216°	Rwy Ldg TDZE Apt Elev	12003 637 645
---	------------------------	-----------------------------	--

ILS RWY 22L (SA CAT I)
DETROIT METRO WAYNE COUNTY (DTW)

DME or RADAR required. RNAV 1-DME/DME/IRU or RADAR required for procedure entry.

Simultaneous approach authorized.
Requires specific OPSPEC, MSPEC, or LOA approval and use of HUD to DH.

MALS R (AS) MISSED APPROACH: Climb to 4000 on heading 216° and CRL VOR/DME R-025 to CRL VOR/DME and hold, continue climb-in-hold to 4000.

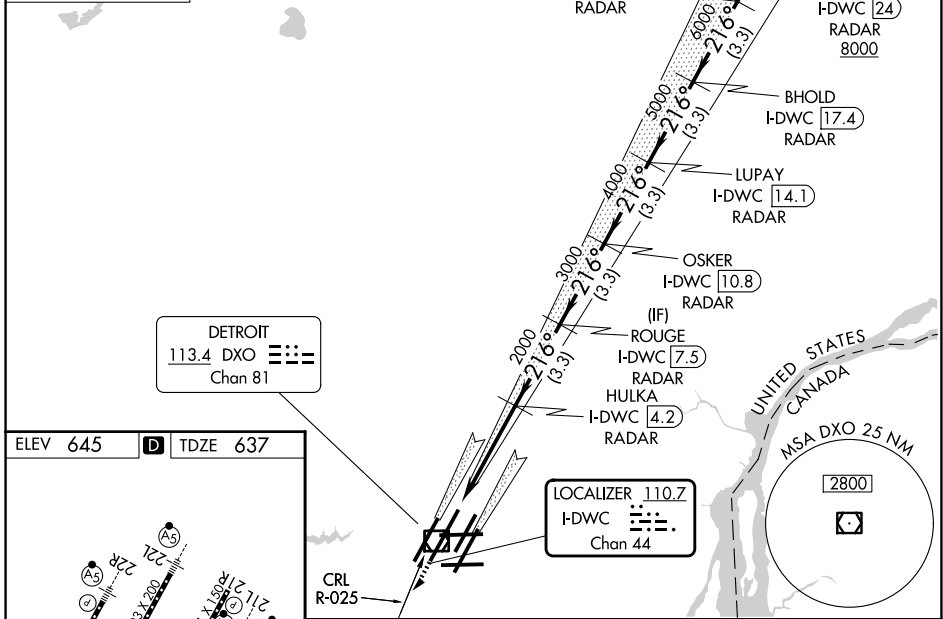
D-ATIS 133.675	DETROIT APP CON 124.05 284.0	METRO TOWER 128.125 317.725	GND CON 121.8 (NW) 119.45 (NE) 132.725 (SW) 119.25 (SE)
--------------------------	--	---------------------------------------	---

MISSED APCH FIX

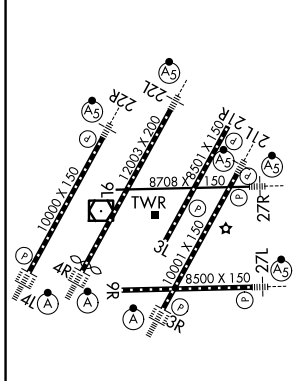
CARLETON
CRL
115.7
Chan 104

ALTERNATE MISSED APCH FIX

HWLER
DXO [16.7]
RADAR



ELEV 645	D	TDZE 637
----------	----------	----------



TDZL/RCLS Rwy 3R, 4L, 4R and 22R
REIL Rwy 3L, 9L, 9R and 21R
HIRL all Rwy

4000	CRL R-025	CRL	OSKER I-DWC [10.8] RADAR	LUPAY I-DWC [14.1] RADAR	BHOLD I-DWC [17.4] RADAR	DRBRN I-DWC [20.7] RADAR	MCOMB I-DWC [24] RADAR
3000	HULKA I-DWC [4.2] RADAR	ROUGE I-DWC [7.5] RADAR					
2000							

GS 2.85° TCH 60

201	4.3 NM	3.3 NM	3.3 NM	3.3 NM	3.3 NM	3.3 NM
CATEGORY	A	B	C	D		
S-ILS 22L	SA CAT I		RA 148/14	150 DA 787		

SA CATEGORY I ILS- SPECIAL AIRCREW & AIRCRAFT CERTIFICATION REQUIRED

EC-1, 14 MAY 2026 to 11 JUN 2026

EC-1, 14 MAY 2026 to 11 JUN 2026