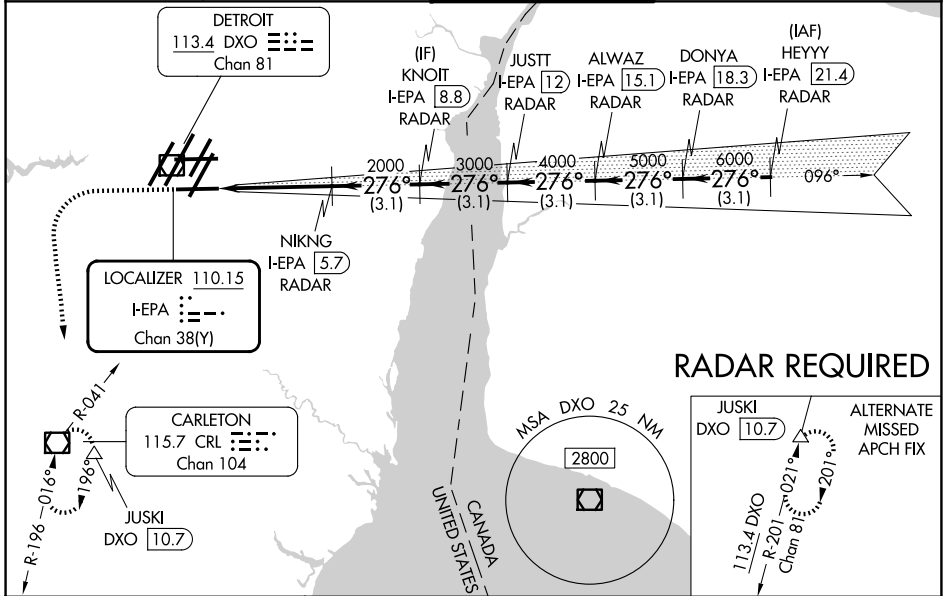


LOC/DME I-EPA 110.15 Chan 38(Y)	APP CRS 276°	Rwy Ldg TDZE Apt Elev	6787 630 645
---	------------------------	-----------------------------	---

ILS RWY 27L (SA CAT I & II)
DETROIT METRO WAYNE COUNTY (DTW)

<p>▼ DME or RADAR required. Simultaneous approach authorized. SA Cat I: Requires specific OPSPEC, MSPEC, or LOA approval and use of HUD to DH. SA Cat II: Reduced lighting: Requires specific OPSPEC, MSPEC, or LOA approval and use of Autoland or HUD to touchdown.</p>	<p>MALSR </p>	<p>MISSED APPROACH: Climb to 1100 then climbing left turn to 4000 on heading 180° and CRL VOR/DME R-041 to CRL VOR/DME and hold, continue climb-in-hold to 4000.</p>
--	-------------------	--

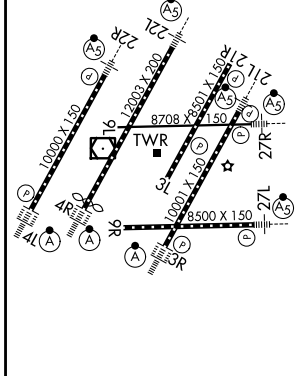
D-ATIS 133.675	DETROIT APP CON 124.05 284.0	METRO TOWER 128.75 317.725	GND CON 121.8 (NW) 119.45 (NE) 132.725 (SW) 119.25 (SE)
--------------------------	--	--------------------------------------	---



EC-1, 14 MAY 2026 to 11 JUN 2026

EC-1, 14 MAY 2026 to 11 JUN 2026

ELEV 645	D TDZE 630	1100	4000	CRL R-041	VGSi and ILS glidepath not coincident (VGSi Angle 3.00/TCH 71).
----------	-------------------	------	------	-----------	---



HEYYY I-EPA [21.4] RADAR	DONYA I-EPA [18.3] RADAR	ALWAZ I-EPA [15.1] RADAR	JUSTT I-EPA [12] RADAR	KNOIT I-EPA [8.8] RADAR	NIKNG I-EPA [5.7] RADAR
7000	6000	5000	4000	3000	2000
GS 3.00°	TCH 56				
1.000'	4.1 NM	3.1 NM	3.1 NM	3.1 NM	3.1 NM
CATEGORY	A	B	C	D	
S-ILS 27L	SA CAT I RA 146/16 150 DA 780				
S-ILS 27L	SA CAT II RA 96/16 100 DA 730				

TDZL/RCLS Rws 3R, 4L, 4R and 22R
REIL Rws 3L, 9L, 9R and 21R
HIRL all Rws

SA CATEGORY I & II ILS SPECIAL AIRCREW & AIRCRAFT CERTIFICATION REQUIRED