

LOC/DME I-DTW 110.7	APP CRS 036°	Rwy Ldg TDZE Apt Elev	11494 640 645
Chan 44			

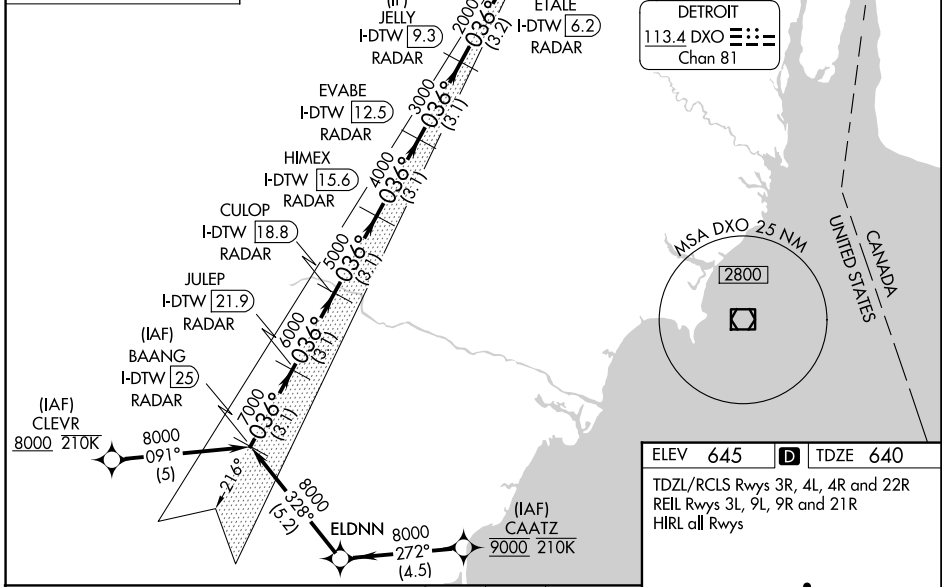
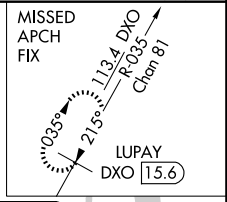
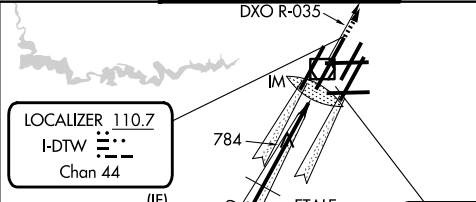
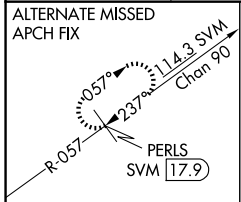
ILS RWY 4R (SA CAT I)

DETROIT METRO WAYNE COUNTY (DTW)

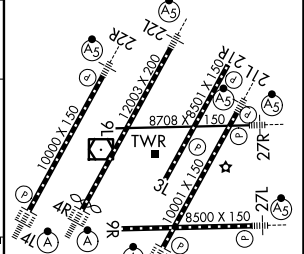
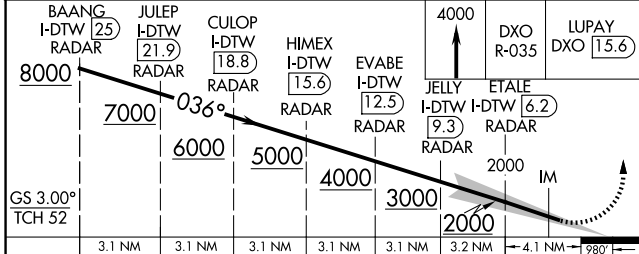
RNAV 1-GPS.
CLEVR, CAATZ and ELDNN: RNAV 1-DME/DME/IRU or GPS required. Aircraft not DME/DME/IRU or GPS equipped- RADAR required for procedure entry. DME or RADAR required.
Simultaneous approach authorized.
Requires specific OPSPEC, MSPEC, or LOA approval and use of HUD to DH.

ALSF-2
MISSED APPROACH: Climb to 4000 on DXO VOR/DME R-035 to LUPAY/DXO VOR/DME/15.6 DME and hold.

D-ATIS 133.675	DETROIT APP CON 124.05 284.0	METRO TOWER 128.125 317.725	GND CON 121.8 (NW) 132.725 (SW)	119.45 (NE) 119.25 (SE)
--------------------------	--	---------------------------------------	---	--



ELEV 645 **D** TDZE 640
TDZL/RCLS Rwy's 3R, 4L, 4R and 22R
REIL Rwy's 3L, 9L, 9R and 21R
HIRL all Rwy's



CATEGORY	A	B	C	D
S-ILS 4R	RA 154/14		150 DA 790	

SA CATEGORY I ILS - SPECIAL AIRCREW & AIRCRAFT CERTIFICATION REQUIRED

EC-1, 14 MAY 2026 to 11 JUN 2026

EC-1, 14 MAY 2026 to 11 JUN 2026