

LOC/DME I-EBR 111.5 Chan 52	APP CRS 216°	Rwy Ldg TDZE Apt Elev	10001 632 645
---	------------------------	-----------------------------	--

ILS or LOC RWY 21L

DETROIT METRO WAYNE COUNTY (DTW)

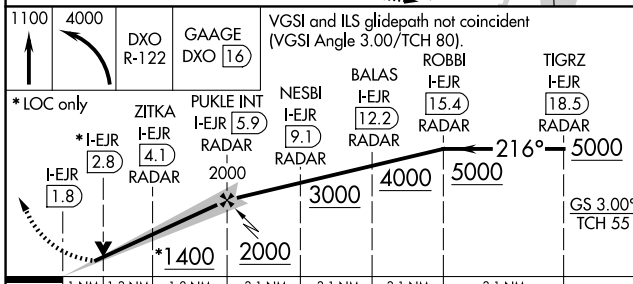
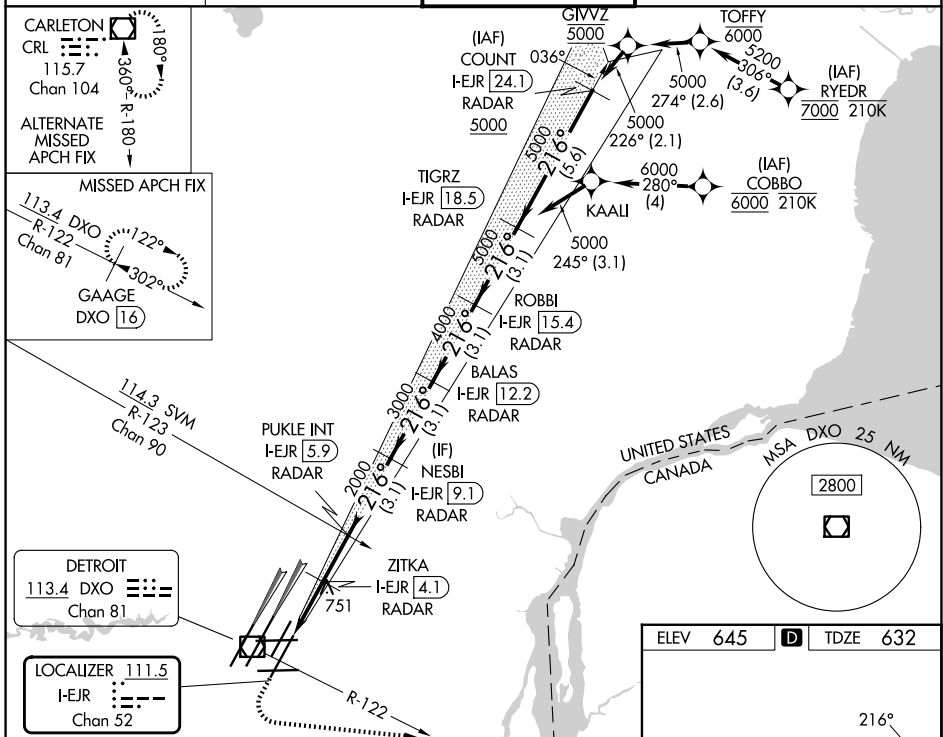
From RYEDR, COBBO: RNAV 1-DME/DME/IRU or GPS required. Aircraft not DME/DME/IRU or GPS equipped - RADAR required for procedure entry. DME or RADAR required.



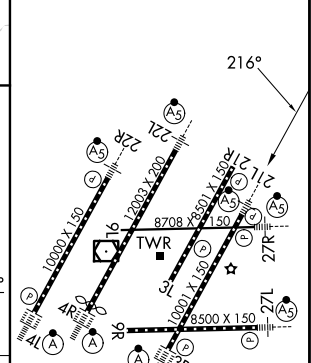
MISSED APPROACH: Climb to 1100 then climbing left turn to 4000 on DXO R-122 to GAAGE/DXO 16 DME and hold, continue climb-in-hold to 4000.

Simultaneous approach authorized.
**RVR 1800 authorized with use of FD or AP or HUD to DA.

D-ATIS 133.675	DETROIT APP CON 125.15 284.0	METRO TOWER 118.4 317.725	GND CON 121.8 (NW) 119.45 (NE) 132.725 (SW) 119.25 (SE)
--------------------------	--	-------------------------------------	---



ELEV 645	D	TDZE 632
----------	----------	----------



CATEGORY	A	B	C	D
S-ILS 21L **	832/24 200 (200-½)			
S-LOC 21L	1020/24	388 (400-½)	1020/35	388 (400-½)
CIRCLING	1180-1	535 (600-1)	1180-1½ 535 (600-1½)	1240-2 595 (600-2)

HIRL all Rwws
REIL Rwws 3L, 9L, 9R and 21R
TDZL/RCLS Rwws 3R, 4L, 4R and 22R

EC-1, 14 MAY 2026 to 11 JUN 2026

EC-1, 14 MAY 2026 to 11 JUN 2026