

LOC/DME I-DWC 110.7 Chan 44	APP CRS 216°	Rwy Ldg TDZE Apt Elev	12003 637 645
---	------------------------	-----------------------------	--

ILS or LOC RWY 22L

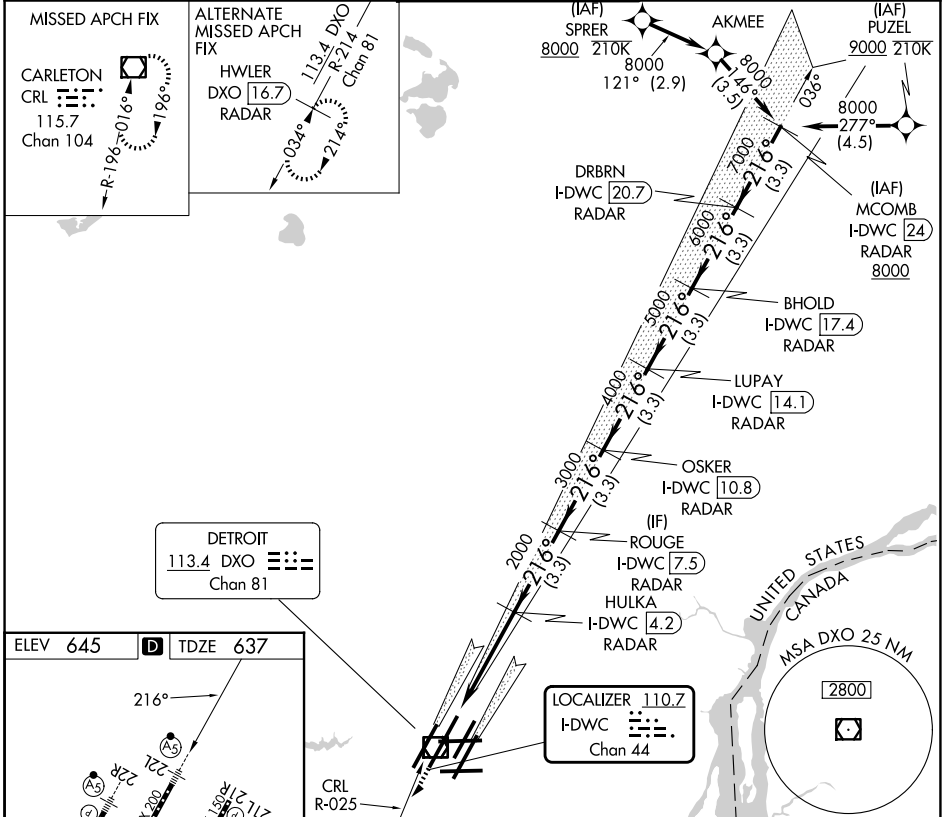
DETROIT METRO WAYNE COUNTY (DTW)

DME or RADAR required.
RNAV 1-DME/DME/IRU or RADAR required for procedure entry.

Simultaneous approach authorized.
#RVR 1800 authorized with use of FD or AP or HUD to DA.

MALSRS
MISSED APPROACH: Climb to 4000 on heading 216° and CRL VOR/DME R-025 to CRL VOR/DME and hold, continue climb-in-hold to 4000.

D-ATIS 133.675	DETROIT APP CON 124.05 284.0	METRO TOWER 128.125 317.725	GND CON 121.8 (NW) 119.45 (NE) 132.725 (SW) 119.25 (SE)
--------------------------	--	---------------------------------------	---



ELEV 645	TDZE 637
<p>216°</p> <p>27L</p> <p>22L</p> <p>27R</p> <p>22R</p> <p>21L</p> <p>21R</p> <p>20R</p> <p>19R</p> <p>18R</p> <p>17R</p> <p>16R</p> <p>15R</p> <p>14R</p> <p>13R</p> <p>12R</p> <p>11R</p> <p>10R</p> <p>9R</p> <p>8R</p> <p>7R</p> <p>6R</p> <p>5R</p> <p>4R</p> <p>3R</p> <p>2R</p> <p>1R</p> <p>0R</p>	
<p>TDZL/RCLS Rwy 3R, 4L, 4R and 22R</p> <p>REIL Rwy 3L, 9L, 9R and 21R</p> <p>HIRL all Rwy</p>	

4000	CRL R-025	CRL	* LOC only	LUPAY I-DWC (14.1) RADAR	BHOLD I-DWC (17.4) RADAR	DRBRN I-DWC (20.7) RADAR	MCOMB I-DWC (24) RADAR
3000	I-DWC (0.2)	HULKA I-DWC (4.2) RADAR	ROUGE I-DWC (7.5) RADAR	OSKER I-DWC (10.8) RADAR			
2000	* I-DWC (0.9)						
1000							
500							
0							
1 NM	3.3 NM	3.3 NM	3.3 NM	3.3 NM	3.3 NM	3.3 NM	3.3 NM

CATEGORY	A	B	C	D
S-ILS 22L #	837/24 200 (200-½)			
S-LOC 22L	1020/24	383 (400-½)	1020/35	383 (400-½)
CIRCLING	1180-1	535 (600-1)	1180-1½ 535 (600-1½)	1240-2 595 (600-2)

EC-1, 14 MAY 2026 to 11 JUN 2026

EC-1, 14 MAY 2026 to 11 JUN 2026