

ILS PRM RWY 4R (CLOSE PARALLEL)

DETROIT METRO WAYNE COUNTY (DTW)

LOC/DME I-DTW 110.7	APP CRS 036°	Rwy Ldg 11494
Chan 44		TDZE 640
		Apt Elev 645

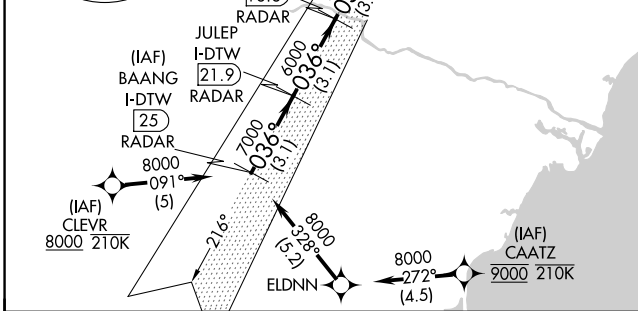
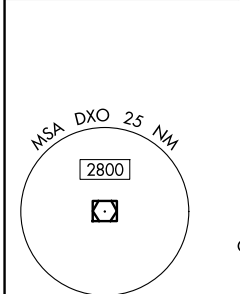
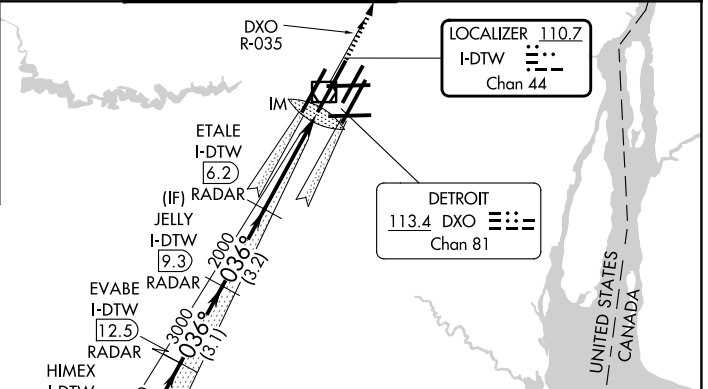
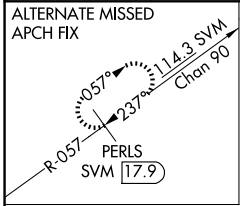
RNAV 1-GPS.
DME or RADAR required. CLEVR, CAATZ and ELDNN: RNAV 1-DME/DME/IRU or GPS required. Aircraft not DME/DME/IRU or GPS equipped- RADAR required for procedure entry.

▼ Simultaneous approach authorized. Use of FD or AP required during simultaneous operations. Dual VHF Comm required. See additional requirements on AAUP. Procedure NA when glideslope not available.

ALSF-2

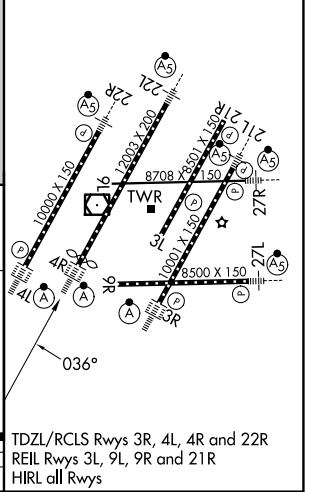
MISSED APPROACH:
Climb to 4000 on DXO
VOR/DME R-035 to
LUPAY/DXO VOR/DME
15.6 DME and hold.

D-ATIS 133.675	DETROIT APP CON 124.05 284.0	METRO TOWER 128.125 317.725 PRM 135.775	GND CON 121.8 (NW) 119.45 (NE) 132.725 (SW) 119.25 (SE)
--------------------------	--	---	---



ELEV 645	D	TDZE 640
----------	---	----------

BAANG I-DTW 25 RADAR	JULEP I-DTW 21.9 RADAR	CULOP I-DTW 18.8 RADAR	HIMEX I-DTW 15.6 RADAR	EVABE I-DTW 12.5 RADAR	JELLY I-DTW 9.3 RADAR	ETALE I-DTW 6.2 RADAR	DXO R-035	LUPAY DXO 15.6
8000	7000	6000	5000	4000	3000	2000	4000	
GS 3.00° TCH 52								
CATEGORY	A		B		C		D	
S-ILS 4R	840/18		200 (200-1/2)					



ILS PRM RWY 4R (CLOSE PARALLEL)

EC-1, 14 MAY 2026 to 11 JUN 2026

EC-1, 14 MAY 2026 to 11 JUN 2026