

DETROIT, MICHIGAN

AL-119 (FAA)

26134

LOC/DME I-JKI <b>111.95</b>	APP CRS <b>216°</b>	Rwy Ldg TDZE <b>642</b> Apt Elev <b>645</b>
Chan <b>56 (Y)</b>		

# ILS PRM Z RWY 22R (SA CAT I & II) (CLOSE PARALLEL)

DETROIT METRO WAYNE COUNTY (DTW)

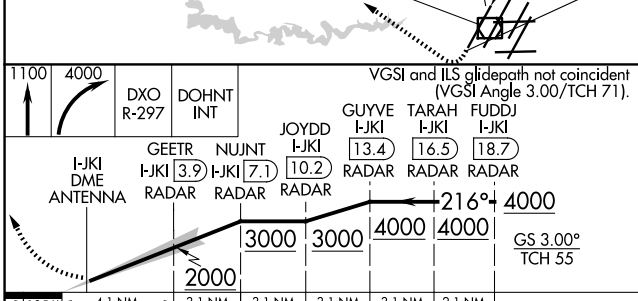
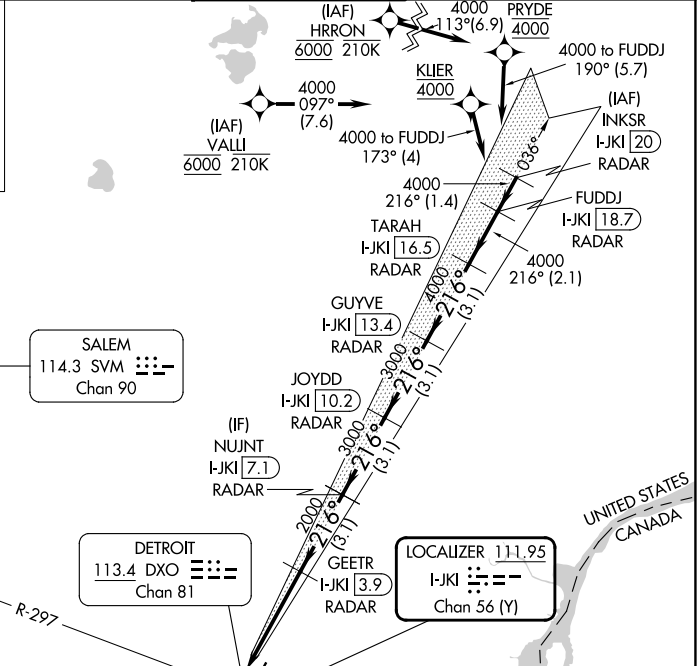
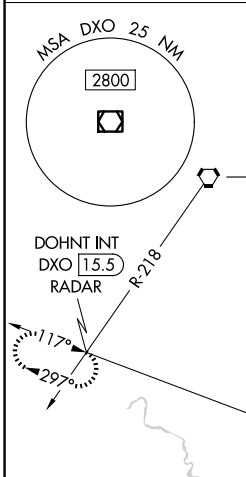
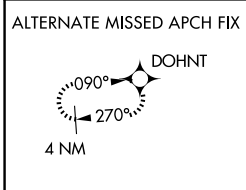
RNAV 1-GPS, HRRON and VALLI: RNAV 1-DME/DME/IRU or GPS required.  
Aircraft not DME/DME/IRU or GPS equipped - RADAR required for procedure entry.

Simultaneous approach authorized. Use of FD or AP required during simultaneous operations. Dual VHF Comm required. See additional requirements on AAUP.  
SA CAT I: Requires specific OPSPEC, MSPEC, or LOA approval and use of HUD to DH.  
SA CAT II: Reduced lighting: Requires specific OPSPEC, MSPEC, or LOA approval and use of autoland or HUD to touchdown.

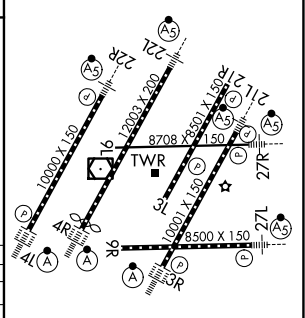
MALS R

MISSED APPROACH: Climb to 1100 then climbing right turn to 4000 on DXO VOR/DME R-297 to DOHNT INT/DXO 15.5 DME/RADAR and hold.

D-ATIS <b>133.675</b>	DETROIT APP CON <b>124.05 284.0</b>	METRO TOWER <b>135.0 317.25</b> <b>PRM 127.05</b>	GND CON <b>121.8 (NW) 119.45 (NE)</b> <b>132.725 (SW) 119.25 (SE)</b>
--------------------------	--	---	---



ELEV 645	D	TDZE 642
----------	---	----------



1058	4.1 NM	3.1 NM	3.1 NM	3.1 NM	3.1 NM	2.1 NM
CATEGORY	A	B	C	D		
S-ILS 22R	SA CAT I RA 148/14 150 DA 792					
S-ILS 22R	SA CAT II RA 98/12 100 DA 742					

DETROIT, MICHIGAN 42°13'N-83°21'W DETROIT METRO WAYNE COUNTY (DTW)

Orig-B 30JAN20

## ILS PRM Z RWY 22R (SA CAT I & II) (CLOSE PARALLEL)

EC-1, 14 MAY 2026 to 11 JUN 2026

EC-1, 14 MAY 2026 to 11 JUN 2026

TDZL/RCLS Rwy 3R, 4L, 4R and 22R  
REIL Rwy 3L, 9L, 9R and 21R  
HIRL all Rwy