

LOC/DME I-JKI 111.95	APP CRS 216°	Rwy Ldg 10000
Chan 56 (Y)		TDZE 642
		Apt Elev 645

ILS Z RWY 22R (SA CAT I & II)

DETROIT METRO WAYNE COUNTY (DTW)

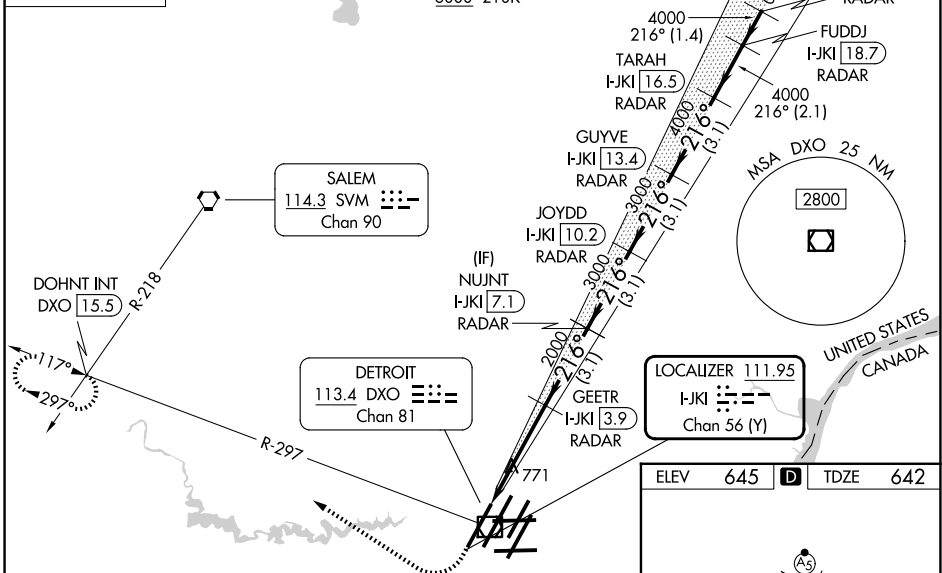
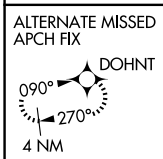
RNAV 1-GPS, HRRON and VALLI: RNAV 1-DME/DME/IRU or GPS required.
 Aircraft not DME/DME/IRU or GPS equipped - RADAR required for procedure entry.

Simultaneous approach authorized. SA CAT I: Requires specific OPSPEC, MSPEC, or LOA approval and use of HUD to DH. SA CAT II: Reduced lighting: Requires specific OPSPEC, MSPEC, or LOA approval and use of autoland or HUD to touchdown.



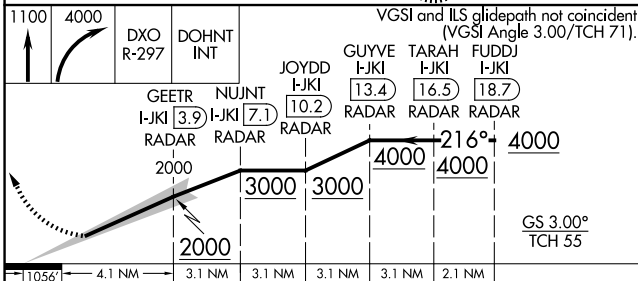
MISSED APPROACH: Climb to 1100 then climbing right turn to 4000 on DXO VOR/DME R-297 to DOHNT INT/DXO 15.5 DME and hold.

D-ATIS 133.675	DETROIT APP CON 124.05 284.0	METRO TOWER 135.0 317.725	GND CON 121.8 (NW) 119.45 (NE) 132.725 (SW) 119.25 (SE)
--------------------------	--	-------------------------------------	---

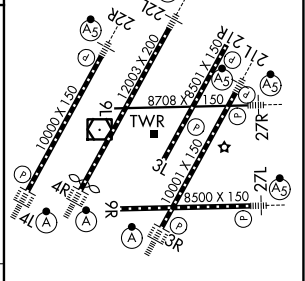


EC-1, 14 MAY 2026 to 11 JUN 2026

EC-1, 14 MAY 2026 to 11 JUN 2026



ELEV	645	TDZE	642
------	-----	------	-----



SA CAT I	RA 148/14	150 DA 792
SA CAT II	RA 98/12	100 DA 742

SA CATEGORY I & II ILS - SPECIAL AIRCREW & AIRCRAFT CERTIFICATION REQUIRED

TDZL/RCLS Rwy 3R, 4L, 4R and 22R
 REL Rwy 3L, 9L, 9R and 21R
 HIRL all Rwy's