


RNAV (GPS) PRM Y RWY 22R (CLOSE PARALLEL)

DETROIT METRO WAYNE COUNTY (DTW)

WAAS CH 42939 W22B	APP CRS 213°	Rwy Ldg TDZE 642 Apt Elev 645
--	------------------------	---

▼ For uncompensated Baro-VNAV systems, LNAV/VNAV NA below -19°C (-2°F) or above 54°C (130°F). DME/DME RNP-0.3 NA. Use of FD or AP providing RNAV track guidance required during simultaneous operations. Simultaneous approach authorized. Dual VHF comm required. See additional requirements on AAUP.

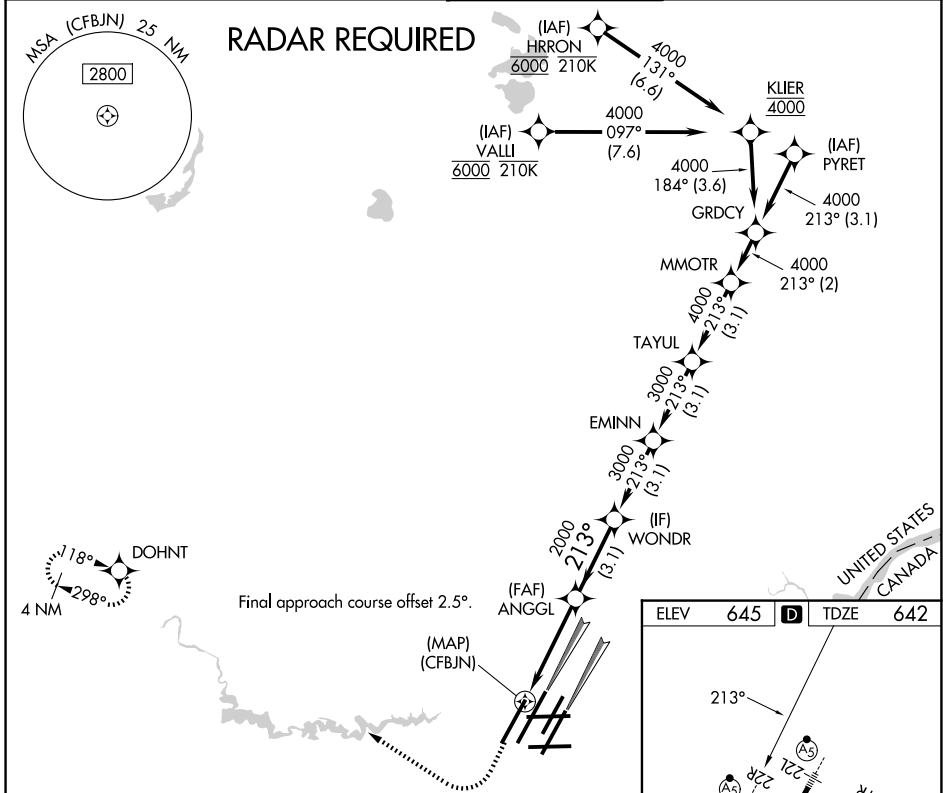
MALSR
 MISSED APPROACH: Climb to 1100 then climbing right turn to 4000 direct DOHNT and hold.


D-ATIS
133.675

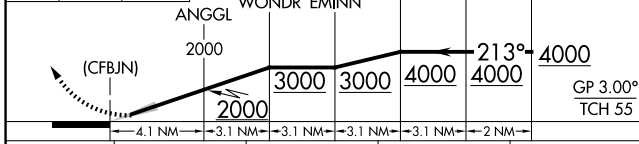
DETROIT APP CON
124.05 284.0

METRO TOWER
135.0 317.725
PRM 127.05

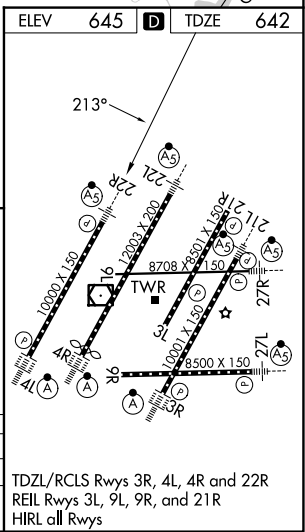
GND CON
121.8 (NW) 119.45 (NE)
132.725 (SW) 119.25 (SE)



1100 4000 DOHNT
 VGSIs and RNAV glidepath not coincident (VGSi Angle 3.00/TCH 71).



CATEGORY	A	B	C	D
LPV DA		892/24	250 (300-½)	
LNAV/VNAV DA		1050/45	408 (500-¾)	



RNAV (GPS) PRM Y RWY 22R (CLOSE PARALLEL)

EC-1, 14 MAY 2026 to 11 JUN 2026

EC-1, 14 MAY 2026 to 11 JUN 2026