

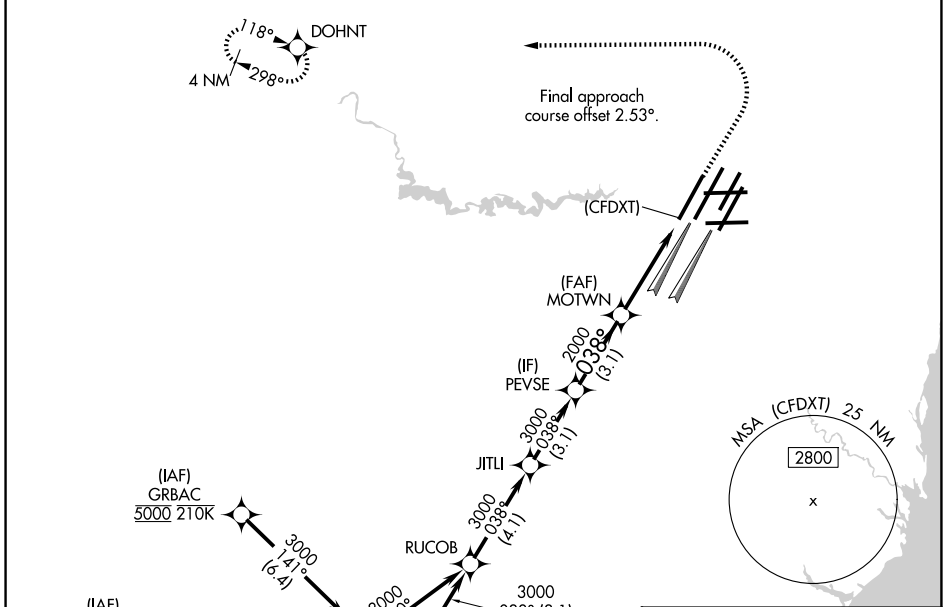
RNAV (GPS) PRM Y RWY 4L (CLOSE PARALLEL)

DETROIT METRO WAYNE COUNTY (DTW)

WAAS CH 82439 W04A	APP CRS 038°	Rwy Ldg 10000 TDZE 645 Apt Elev 645
--	------------------------	--

RNP APCH.	ALSF-2	MISSED APPROACH: Climb to 1100 then direct left turn to 4000 direct DOHNT and hold.
▼ Rwy 4L and 4R separated by 3000 feet centerline to centerline. For uncompensated Baro-VNAV systems, LNAV/VNAV NA below -19°C or above 54°C. Simultaneous approach authorized. Use of FD or AP required during simultaneous operations. Dual VHF comm required. See additional requirements on AAUP.		

D-ATIS 133.675	DETROIT APP CON 124.05 284.0	METRO TOWER 135.0 317.725 PRM 127.05	GND CON 121.8 (NW) 119.45 (NE) 132.725 (SW) 119.25 (SE)
--------------------------	--	--	---

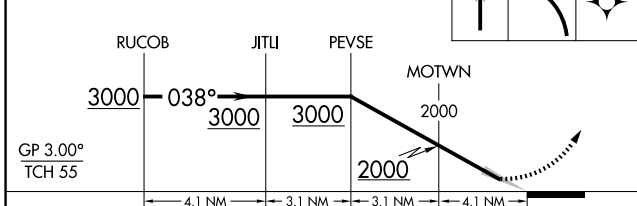


EC-1, 14 MAY 2026 to 11 JUN 2026

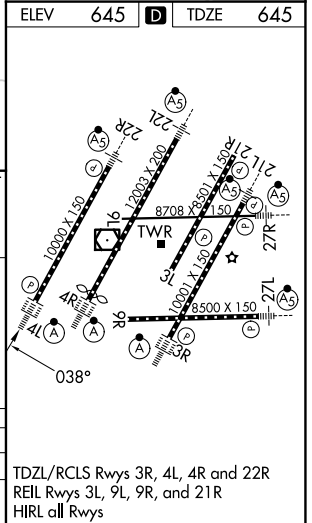
EC-1, 14 MAY 2026 to 11 JUN 2026

ELEV 645	D	TDZE 645
----------	----------	----------

VGSI and RNAV glidepath not coincident (VGSI Angle 3.00/TCH 71).



CATEGORY	A	B	C	D
LPV DA		895/24	250 (300-½)	
LNAV/VNAV DA		1068/45	423 (500-¾)	



RNAV (GPS) PRM Y RWY 4L (CLOSE PARALLEL)