

DETROIT, MICHIGAN

AL-119 (FAA)

# RNAV (GPS) PRM Z RWY 4R (CLOSE PARALLEL)

DETROIT METRO WAYNE COUNTY (DTW)

WAAS CH <b>87139</b> <b>W04B</b>	APP CRS <b>036°</b>	Rwy Ldg <b>11494</b> TDZE <b>640</b> Apt Elev <b>645</b>
--	------------------------	--

RNP APCH.

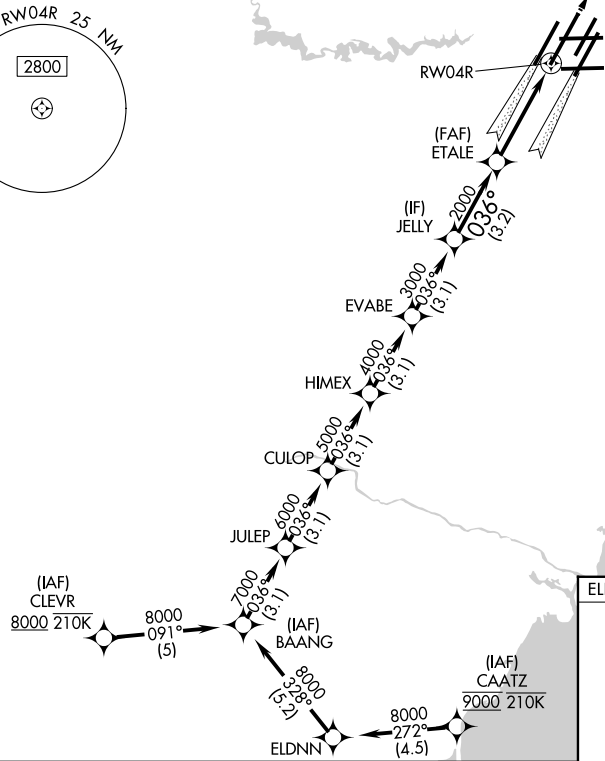
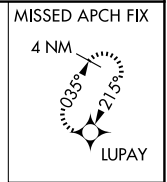
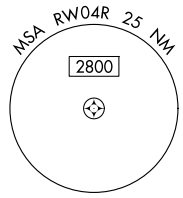
**▽** For uncompensated Baro-VNAV systems, LNAV/VNAV NA below -19°C or above 54°C. Simultaneous approach authorized. Use of FD or AP required during simultaneous operations. Dual VHF comm required. See additional requirements on AAUP.

ALS-2

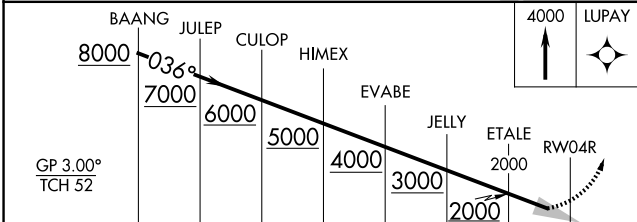
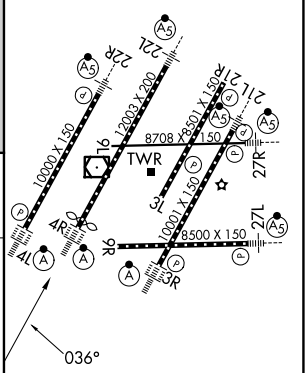


MISSED APPROACH:  
Climb to 4000 direct LUPAY and hold.

D-ATIS <b>133.675</b>	DETROIT APP CON <b>124.05 284.0</b>	METRO TOWER <b>128.125 317.725</b> <b>PRM 135.775</b>	GND CON <b>121.8 (NW) 119.45 (NE)</b> <b>132.725 (SW) 119.25 (SE)</b>
--------------------------	--	---	---



ELEV 645	<b>D</b> TDZE 640
----------	-------------------



CATEGORY	A		B		C		D
LPV DA	840/18		200 (200-½)				
LNAV/VNAV DA	1021/35		381 (400-¾)				

TDZL/RCLS Rwy 3R, 4L, 4R and 22R  
REL Rwy 3L, 9L, 9R and 21R  
HIRL all Rwy

DETROIT, MICHIGAN  
Amdt 1A 28FEB19

42°13'N-83°21'W  
**RNAV (GPS) PRM Z RWY 4R (CLOSE PARALLEL)**  
DETROIT METRO WAYNE COUNTY (DTW)

EC-1, 14 MAY 2026 to 11 JUN 2026

EC-1, 14 MAY 2026 to 11 JUN 2026