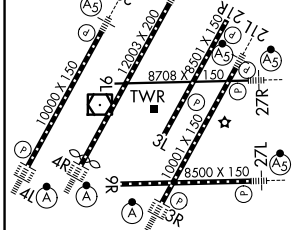
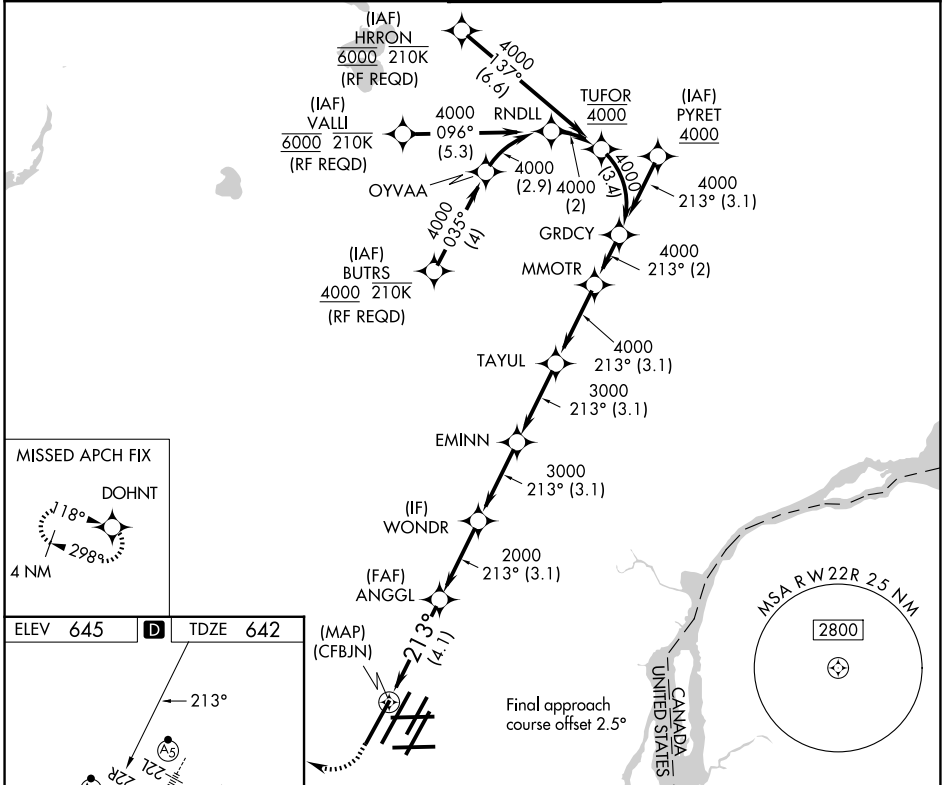


RNAV (RNP) U RWY 22R

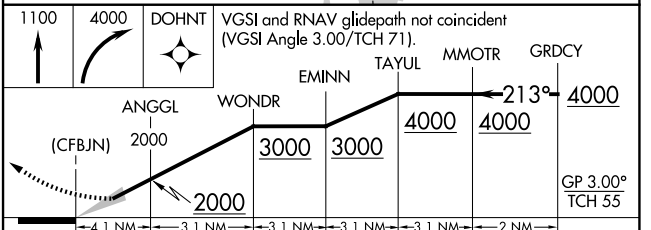
DETROIT METRO WAYNE COUNTY (DTW)

APP CRS 213°	Rwy Ldg TDZE Apt Elev	10000 642 645
------------------------	-----------------------------	--

RNP AR APCH.		MALSR	MISSED APPROACH: Climb to 1100 then climbing right turn to 4000 direct DOHNT and hold.
▼ For uncompensated Baro-VNAV systems, procedure NA below -19°C (-2°F) or above 54°C (130°F). Simultaneous approach authorized. For inop ALS, increase RNP 0.30 all Cats visibility to RVR 5500.			
D-ATIS 133.675	DETROIT APP CON 124.05 284.0	METRO TOWER 135.0 317.725	GND CON 121.8 (NW) 119.45 (NE) 132.725 (SW) 119.25 (SE)



TDZL/RCLS Rwy 3R, 4L, 4R and 22R
HIRL all Rwy's
REIL Rwy 3L, 9L, 9R and 21R



CATEGORY	A	B	C	D
RNP 0.30 DA	987/30		345 (400-5%)	

AUTHORIZATION REQUIRED

EC-1, 14 MAY 2026 to 11 JUN 2026

EC-1, 14 MAY 2026 to 11 JUN 2026