

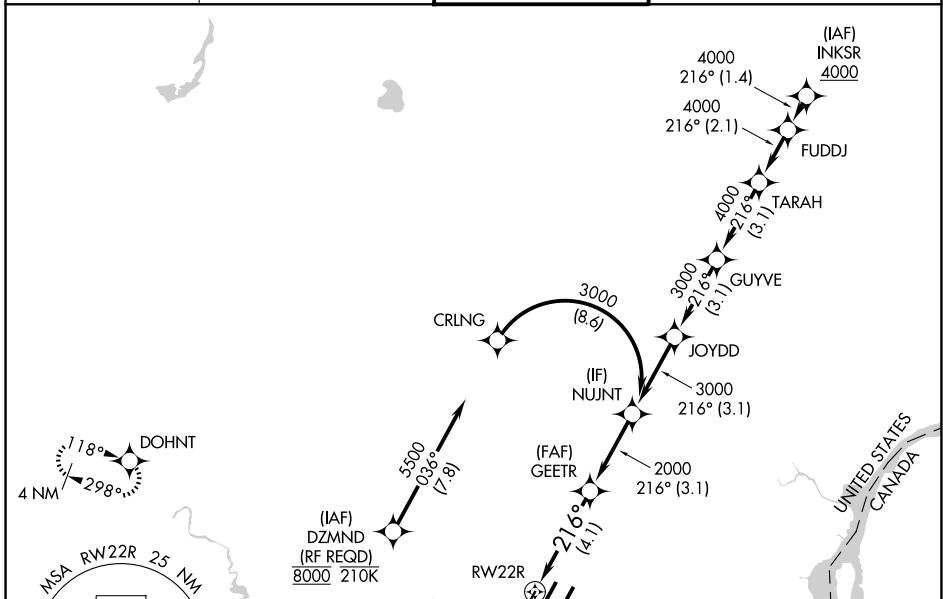
APP CRS	Rwy Ldg	<b>10000</b>
<b>216°</b>	TDZE	<b>642</b>
	Apt Elev	<b>645</b>

# RNAV (RNP) W RWY 22R

DETROIT METRO WAYNE COUNTY (DTW)

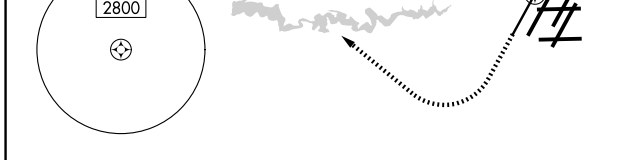
RNP AR APCH.	MALSR	MISSED APPROACH: Climb to 1100 then climbing right turn to 4000 direct DOHNT and hold, continue climb-in-hold to 4000.
<p>▼ For uncompensated Baro-VNAV systems, procedure NA below -19°C or above 54°C. Simultaneous approach authorized. For inop ALS, increase RNP 0.30 all Cats visibility to RVR 5500.</p>		

D-ATIS <b>133.675</b>	DETROIT APP CON <b>124.05 284.0</b>	METRO TOWER <b>135.0 317.725</b>	GND CON <b>121.8 (NW) 119.45 (NE)</b> <b>132.725 (SW) 119.25 (SE)</b>
--------------------------	--	-------------------------------------	---



EC-1, 14 MAY 2026 to 11 JUN 2026

EC-1, 14 MAY 2026 to 11 JUN 2026



1100	4000	DOHNT	VGSi and RNAV glidepath not coincident (VGSi Angle 3.00/TCH 71).	NUJNT
GEETR				
2000				
216°				
3000				
RW22R				
2000				
GP 3.00°				
TCH 55				
4.1 NM				
3.1 NM				

CATEGORY	A	B	C	D
RNP 0.30 DA	987/30 345 (400-5/8)			

## AUTHORIZATION REQUIRED

