

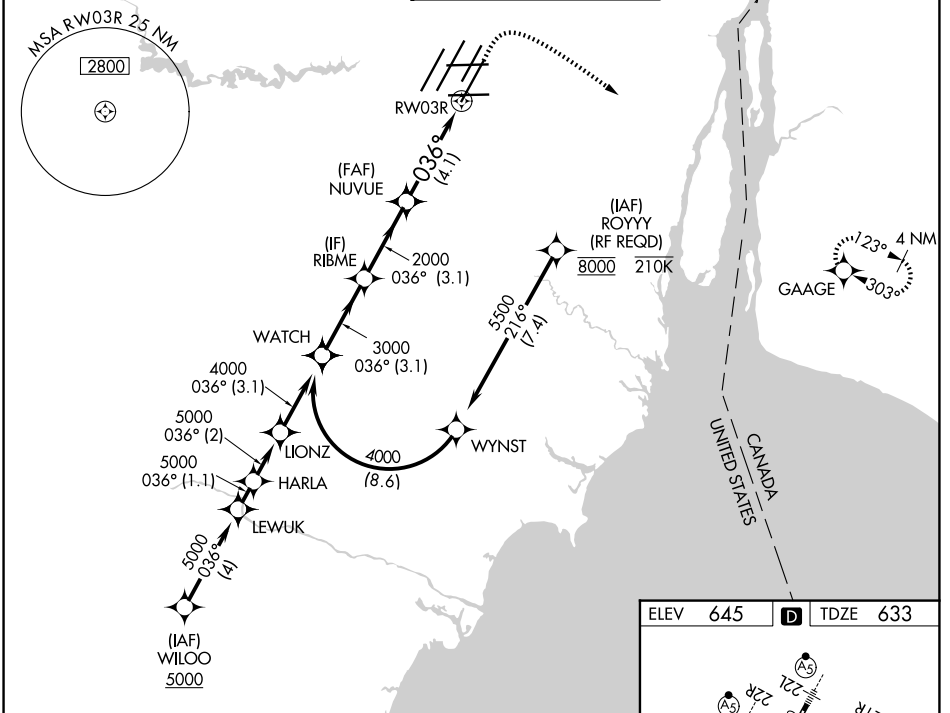
APP CRS	Rwy Ldg	<b>10001</b>
<b>036°</b>	TDZE	<b>633</b>
	Apt Elev	<b>645</b>

# RNAV (RNP) W RWY 3R

DETROIT METRO WAYNE COUNTY (DTW)

RNP AR APCH.	ALSF-2	MISSED APPROACH: Climb to 1100 then climbing right turn to 4000 direct GAAGE and hold.
<p>For uncompensated Baro-VNAV systems, procedure NA below -19°C (-2°F) or above 54°C (130°F). Simultaneous approach authorized.</p>		

D-ATIS <b>133.675</b>	DETROIT APP CON <b>125.15 284.0</b>	METRO TOWER <b>118.4 317.725</b>	GND CON <b>121.8 (NW) 119.45 (NE)</b> <b>132.725 (SW) 119.25 (SE)</b>
--------------------------	--	-------------------------------------	---



EC-1, 14 MAY 2026 to 11 JUN 2026

EC-1, 14 MAY 2026 to 11 JUN 2026

VGSI and RNAV glidepath not coincident (VGSI Angle 3.00/TCH 70).

WATCH	RIBME	NUVUE	RW03R
4000	3000	2000	
GP 3.00° TCH 54			
3.1 NM		3.1 NM	4.1 NM
CATEGORY	A	B	C
RNP 0.30 DA	1021/35 388 (400-%)		
<b>AUTHORIZATION REQUIRED</b>			

