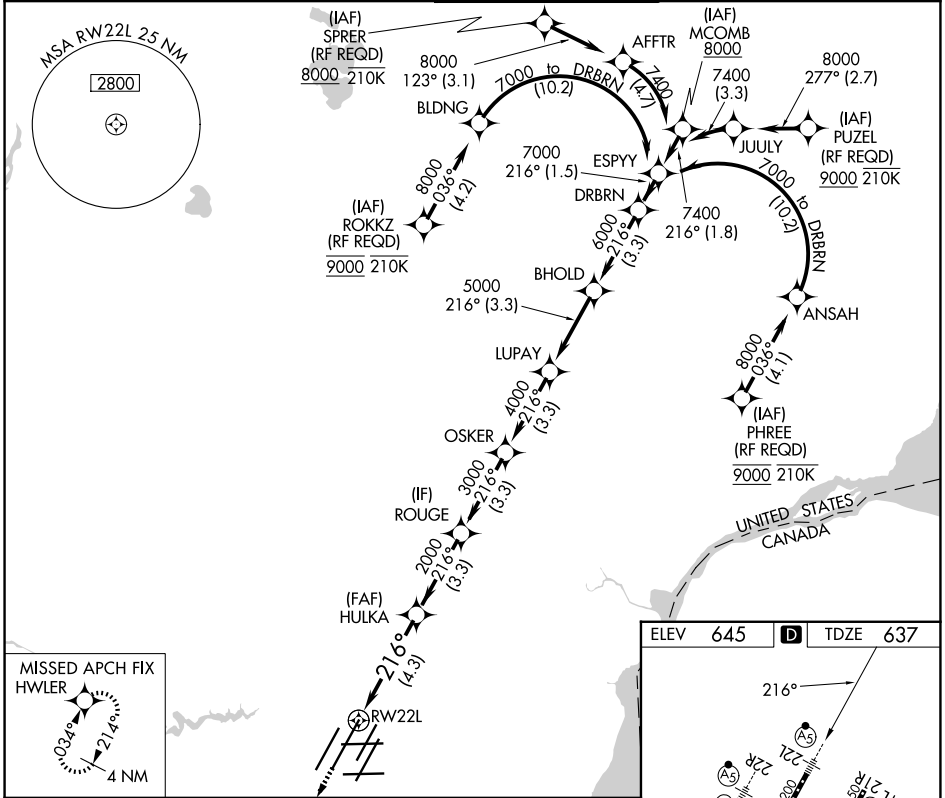


APP CRS	Rwy Ldg	12003
216°	TDZE	637
	Apt Elev	645

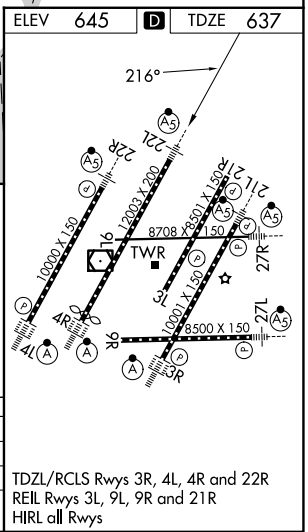
RNAV (RNP) X RWY 22L

DETROIT METRO WAYNE COUNTY (DTW)

RNP AR APCH.		MALSR	MISSED APPROACH: Climb to 4000 direct HWLER and hold.
<p>▼ For uncompensated Baro-VNAV systems, procedure NA below -10°C (14°F) or above 54°C (130°F). Simultaneous approach authorized. For inop ALS, increase RNP 0.15 all Cats visibility to RVR 4500 and RNP 0.30 all Cats visibility to RVR 6000.</p>			
D-ATIS	DETROIT APP CON	METRO TOWER	GND CON
133.675	124.05 284.0	128.125 317.725	121.8 (NW) 119.45 (NE) 132.725 (SW) 119.25 (SE)



4000	HWLER	DRBRN
HULKA	ROUGE	OSKER
2000	3000	4000
		LUPAY
		5000
		BHOLD
		6000
		216°
		7000
		GP 2.85°
		TCH 60
	4.3 NM	3.3 NM
		3.3 NM
		3.3 NM
		3.3 NM
		3.3 NM
		3.3 NM
CATEGORY	A	B
RNP 0.15 DA	941/24	304 (300-1/2)
RNP 0.30 DA	1040/40	403 (400-3/4)



AUTHORIZATION REQUIRED

TDZL/RCLS Rwy's 3R, 4L, 4R and 22R
REIL Rwy's 3L, 9L, 9R and 21R
HIRL all Rwy's

EC-1, 14 MAY 2026 to 11 JUN 2026

EC-1, 14 MAY 2026 to 11 JUN 2026