


APP CRS	Rwly Ldg	10000
216°	TDZE	642
	Apt Elev	645

RNAV (RNP) X RWY 22R

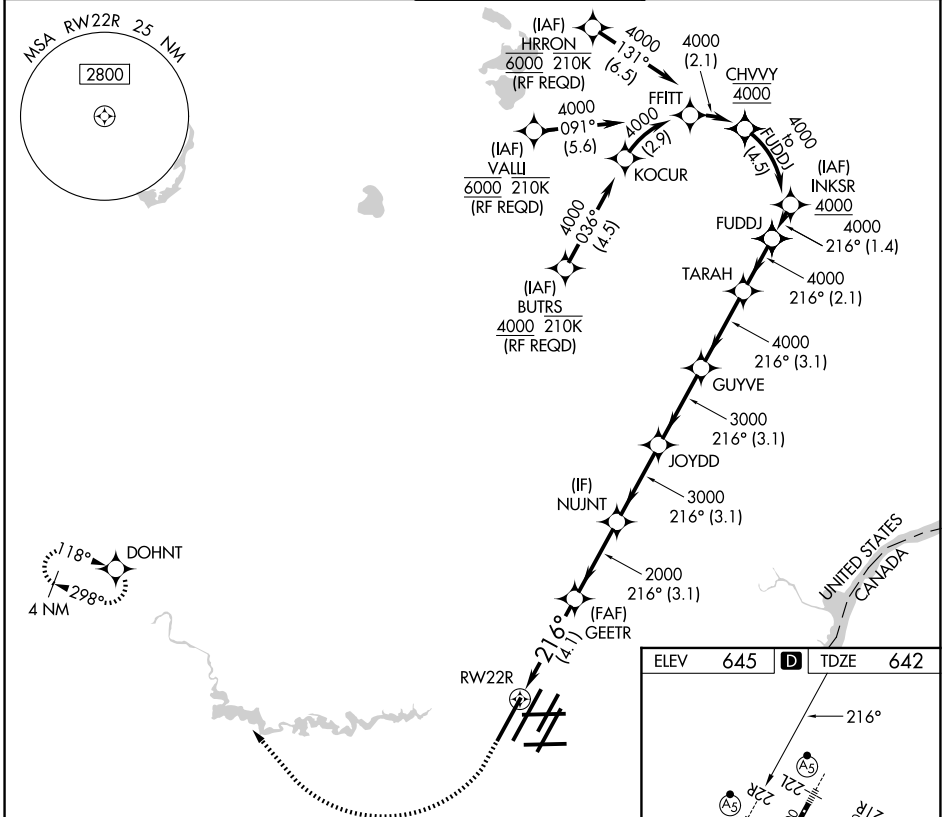
DETROIT METRO WAYNE COUNTY (DTW)




RNP AR APCH. MALSR 

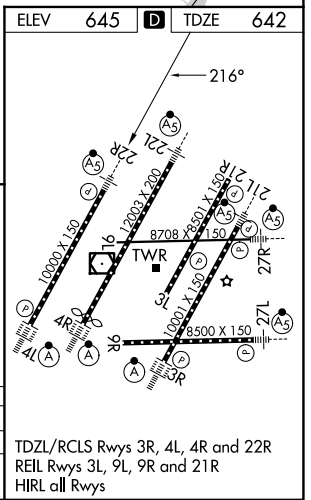
⚠ For uncompensated Baro-VNAV systems, procedure NA below -19°C (-2°F) or above 54°C (130°F). Simultaneous approach authorized. For inop ALS, increase RNP 0.30 all Cats visibility to RVR 5500.

MISSED APPROACH: Climb to 1100 then climbing right turn to 4000 direct DOHNT and hold.

D-ATIS 133.675	DETROIT APP CON 124.05 284.0	METRO TOWER 135.0 317.725	GND CON 121.8 (NW) 119.45 (NE) 132.725 (SW) 119.25 (SE)
--------------------------	--	-------------------------------------	---



1100	4000	DOHNT	VGSi and RNAV glidepath not coincident (VGSi Angle 3.00/TCH 71).				
			GUYVE	TARA	FUDDJ		
			GEETR	NUJNT	JOYDD	216°	
			2000	3000	3000	4000	4000
			2000				GP 3.00°
							TCH 55
			4.1 NM	3.1 NM	3.1 NM	3.1 NM	2.1 NM
CATEGORY	A		B		C		D
RNP 0.30 DA			987/30		345 (400-5%)		



AUTHORIZATION REQUIRED

TDZL/RCLS Rwy 3R, 4L, 4R and 22R
REIL Rwy 3L, 9L, 9R and 21R
HIRL all Rwy

EC-1, 14 MAY 2026 to 11 JUN 2026

EC-1, 14 MAY 2026 to 11 JUN 2026