

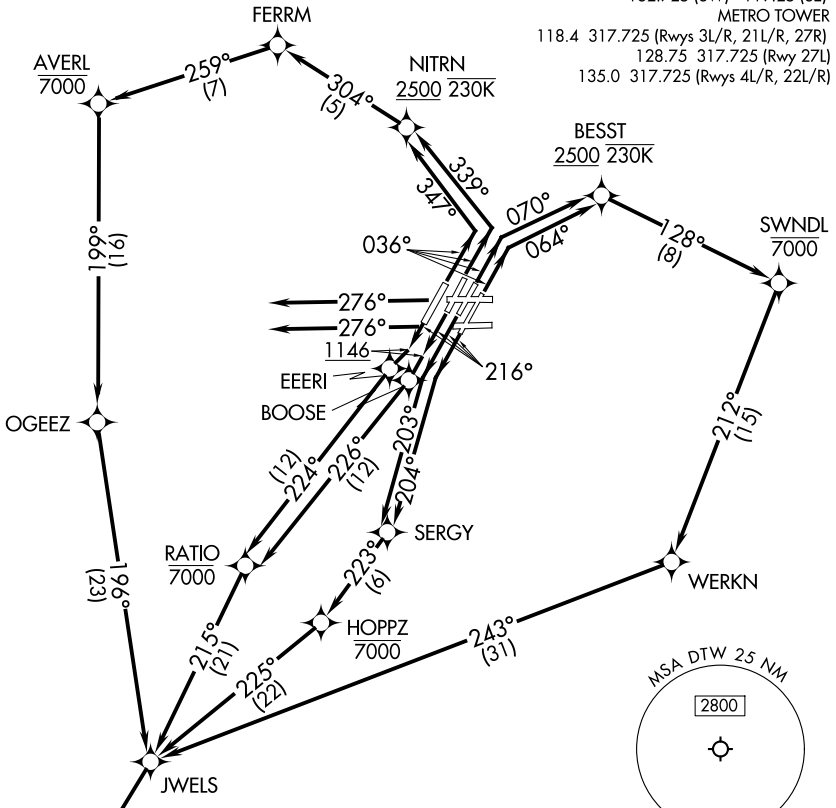
# SNDRS THREE DEPARTURE (RNAV) Departure Routes

**TOP ALTITUDE:**  
**17000**

RNAV-1 DME/DME/IRU or GPS.

RADAR required.

DETROIT DEP CON  
 125.525 284.0 (Rwys 4L/R, 22L/R)  
 132.025 284.0 (Rwys 3L/R, 21L/R, 27L/R)  
 D-ATIS 118.125  
 CLNC DEL 120.65  
 CPDLC  
 GND CON  
 121.8 (NW) 119.45 (NE)  
 132.725 (SW) 119.25 (SE)  
 METRO TOWER  
 118.4 317.725 (Rwys 3L/R, 21L/R, 27R)  
 128.75 317.725 (Rwy 27L)  
 135.0 317.725 (Rwys 4L/R, 22L/R)



EC-1, 14 MAY 2026 to 11 JUN 2026

EC-1, 14 MAY 2026 to 11 JUN 2026

NOTE: Turbojet departures at/above 10000, maintain 280K until advised by ATC.  
 NOTE: TORRR Transition: For use by KIND and KCVG area arrivals only and flights filed at or below FL220, or as assigned by ATC.

**TAKEOFF MINIMUMS:**  
 Rwy 27L/R: Standard  
 Rwy 3L/R, 4L/R, 21L/R, 22L/R: Standard with minimum climb of 500' per NM to 1146.

(CONTINUED ON FOLLOWING PAGE)

NOTE: Chart not to scale.

◆ SNDRS  
 See following page for Transition Routes

# SNDRS THREE DEPARTURE (RNAV) Departure Routes

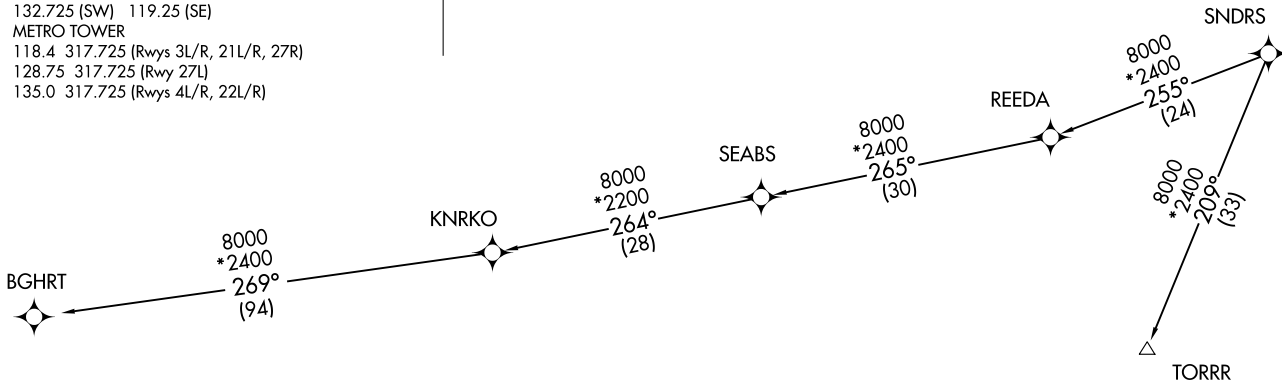
SNDRS THREE DEPARTURE (RNAV) Transition Routes  
(SNDRS3, SNDRS) 16MAY24

DETROIT DEP CON  
125.525 284.0 (Rwys 4L/R, 22L/R)  
132.025 284.0 (Rwys 3L/R, 21L/R, 27L/R)  
D-ATIS 118.125  
CLNC DEL 120.65  
CPDLC  
GND CON  
121.8 (NW) 119.45 (NE)  
132.725 (SW) 119.25 (SE)  
METRO TOWER  
118.4 317.725 (Rwys 3L/R, 21L/R, 27R)  
128.75 317.725 (Rwy 27L)  
135.0 317.725 (Rwys 4L/R, 22L/R)



RNAV-1 DME/DME/IRU or GPS.  
RADAR required.

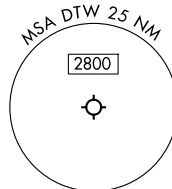
TOP ALTITUDE:  
17000



NOTE: Turbojet departures at/above 10000, maintain 280K until advised by ATC.  
NOTE: TORRR Transition: For use by KIND and KCVG area arrivals only and flights filed at or below FL220, or as assigned by ATC.

TAKEOFF MINIMUMS:

Rwys 27L/R: Standard  
Rwys 3L/R, 4L/R, 21L/R, 22L/R: Standard with minimum climb of 500' per NM to 1146.



NOTE: Chart not to scale.

(CONTINUED ON FOLLOWING PAGE)

(SNDRS3, SNDRS) 24137 AL-119 (FAA)  
SNDRS THREE DEPARTURE (RNAV) Transition Routes  
DETROIT METRO WAYNE COUNTY (DTW)  
DETROIT, MICHIGAN



DEPARTURE ROUTE DESCRIPTION

SEE ADDITIONAL REQUIREMENTS IN RNAV DEPARTURE AAUP.

TAKEOFF RUNWAY 3L: Climb on heading 036° to intercept course 070° to cross BESST at or above 2500 and at or below 230K, then on track 128° to cross SWNDL at or below 7000, then on track 212° to WERKN, then on track 243° to JWELS, thence...

TAKEOFF RUNWAY 3R: Climb on heading 036° to intercept course 064° to cross BESST at or above 2500 and at or below 230K, then on track 128° to cross SWNDL at or below 7000, then on track 212° to WERKN, then on track 243° to JWELS, thence...

TAKEOFF RUNWAY 4L: Climb on heading 036° to intercept course 347° to cross NITRN at or above 2500 and at or below 230K, then on track 304° to FERRM, then on track 259° to cross AVERL at or below 7000, then or track 199° to OGEEZ, then on track 196° to JWELS, thence...

TAKEOFF RUNWAY 4R: Climb on heading 036° to intercept course 339° to cross NITRN at or above 2500 and at or below 230K, then on track 304° to FERRM, then on track 259° to cross AVERL at or below 7000, then or track 199° to OGEEZ, then on track 196° to JWELS, thence....

TAKEOFF RUNWAY 21L: Climb on heading 216° to intercept course 204° to SERGY, then on track 223° to cross HOPPZ at or below 7000, then on track 225° to JWELS, thence....

TAKEOFF RUNWAY 21R: Climb on heading 216° to intercept course 203° to SERGY, then on track 223° to cross HOPPZ at or below 7000, then on track 225° to JWELS, thence....

TAKEOFF RUNWAY 22L: Climb on heading 216° to 1146, then direct BOOSE, then on track 226° to cross RATIO at or below 7000, then on track 215° to JWELS, thence....

TAKEOFF RUNWAY 22R: Climb on heading 216° to 1146, then direct EEERI, then on track 224° to cross RATIO at or below 7000, then on track 215° to JWELS, thence....

TAKEOFF RUNWAYS 27L/27R: Climb on heading 276° or as assigned by ATC, for RADAR vectors to JWELS, thence....

...on track 218° to SNDRS, then on (transition). Maintain 17000, expect filed altitude 10 minutes after departure.

BGHRT TRANSITION (SNDRS3.BGHRT):

TORRR TRANSITION (SNDRS3.TORRR):

EC-1, 14 MAY 2026 to 11 JUN 2026

EC-1, 14 MAY 2026 to 11 JUN 2026