

TPGUN TWO ARRIVAL(RNAV)

AL-119 (FAA)

DETROIT, MICHIGAN

EC-1, 14 MAY 2026 to 11 JUN 2026

NOTE: RADAR required.

NOTE: RNAV 1.

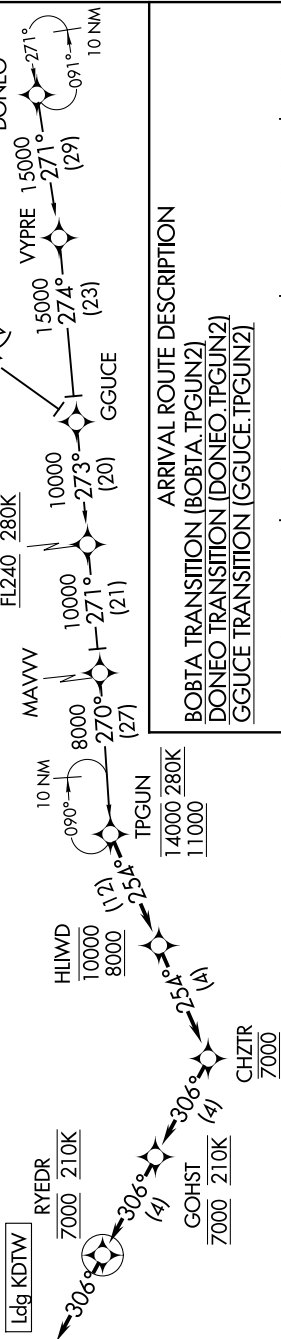
NOTE: DME/DME/IRU or GPS required.

NOTE: Expect Rwy 21L.

NOTE: Jet aircraft descend via Mach number until intercepting 280K. Maintain 280K until slowed by the STAR.

NOTE: For use when DTW landing south or west. When DTW landing north, file and expect the CUUGR RNAV STAR.

NOTE: GGUCE TRANSITION: Except for flights originating in Canada, do not file, to be assigned by ATC.



ARRIVAL ROUTE DESCRIPTION

- BOBTA TRANSITION (BOBTA.TPGUN2)
- DONEO TRANSITION (DONEO.TPGUN2)
- GGUCE TRANSITION (GGUCE.TPGUN2)

From TPGUN on track 254° to cross HLIWD between 8000 and 10000, then on track 254° to CHZTR at 7000, then on track 306° to cross GOHST at 7000 and at 210K, then on track 306° to cross RYEDR at 7000 and at 210K, then on track 306°. Expect RADAR vectors to final approach course.

LOST COMMUNICATIONS:

From RYEDR, execute ILS Rwy 21L approach.

NOTE: Chart not to scale.

TPGUN TWO ARRIVAL (RNAV)

(TPGUN.TPGUN2) 10OCT19

DETROIT, MICHIGAN

DETROIT METRO WAYNE COUNTY (DTW)

EC-1, 14 MAY 2026 to 11 JUN 2026