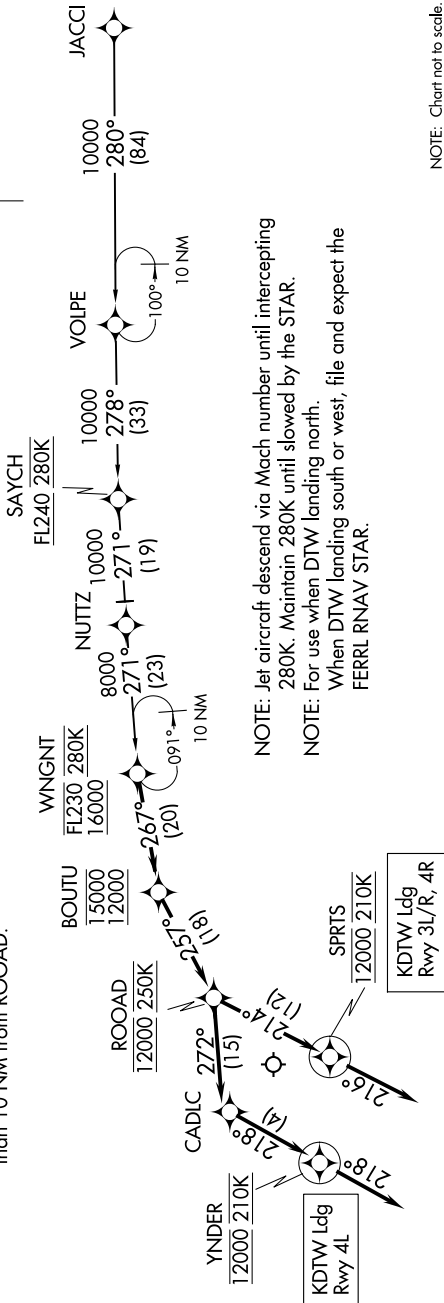


EC-1, 14 MAY 2026 to 11 JUN 2026

D-ATIS 133.675
DETROIT APP CON
126.225 284.0



NOTE: Chart not to scale.

NOTE: RADAR required.

NOTE: RNAV 1.

NOTE: DME/DME/IRU or GPS required.

NOTE: Use Rwy 3R transition or as assigned by ATC.
 Expect runway assignment from Detroit APP CON no later than 10 NM from ROOAD.

ARRIVAL ROUTE DESCRIPTION

JACCI TRANSITION (JACCI.WNGNT2)

From WNGNT on track 267° to cross BOUTU between 12000 and 15000, then on track 257° to cross ROOAD at 12000 and at 250K. LANDING RUNWAYS 3L/R, 4R: From ROOAD on track 214° to cross SPRTS at 12000 and at 210K, then on track 216°. Expect RADAR vectors to final approach course.

LANDING RUNWAY 4L: From ROOAD on track 272° to CADLIC, then on track 218° to cross YNDER at 12000 and at 210K, then on track 218°. Expect RADAR vectors to final approach course.

EC-1, 14 MAY 2026 to 11 JUN 2026