

WAAS CH <b>82534</b> <b>W25A</b>	APP CRS <b>250°</b>	Rwy Ldg TDZE Apt Elev	<b>4700</b> <b>2592</b> <b>2592</b>
--	------------------------	-----------------------------	---

# RNAV (GPS) RWY 25

DICKINSON/THEODORE ROOSEVELT RGNL (DIK)

RNP APCH.

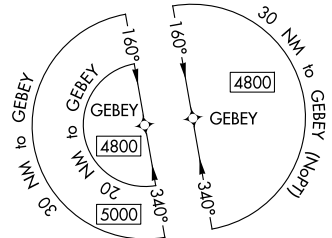
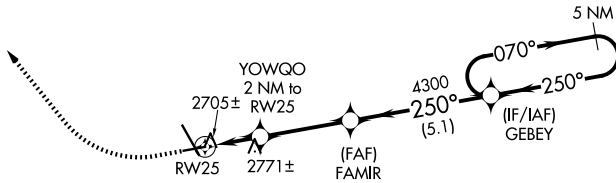
**▼** Rwy 25 helicopter visibility reduction below 3/4 SM NA. When local altimeter setting not received, use Bowman altimeter setting and increase all MDA 160 feet and visibility Cats C and D 1/2 SM.

MISSED APPROACH: Climb to 3200 then climbing right turn to 4800 direct NEPFY and hold.

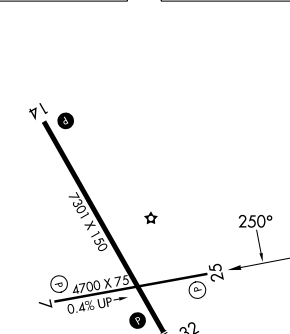
ASOS  
**118.375**

MINNEAPOLIS CENTER  
**124.25 236.825**

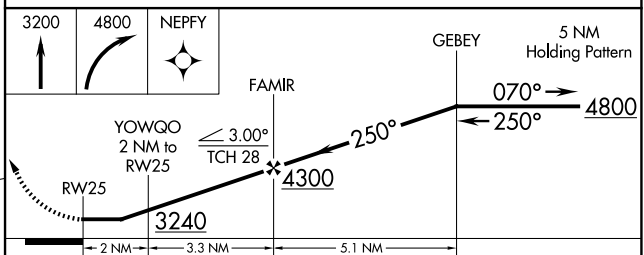
UNICOM  
**123.0 (CTAF) 0**



ELEV 2592 **D** TDZE 2592



HIRL Rwy 14-32 **L**  
MIRL Rwy 7-25 **L**  
REIL Rwy 7, 14 and 25 **L**



CATEGORY	A	B	C	D
LP MDA	2980-1	388 (400-1)	2980-1½	388 (400-1½)
LNAV MDA	3060-1	468 (500-1)	3060-1¾	468 (500-1¾)
CIRCLING	3080-1 488 (500-1)	3100-1 508 (600-1)	3120-1½ 528 (600-1½)	3220-2 628 (700-2)

NC-1, 14 MAY 2026 to 11 JUN 2026

NC-1, 14 MAY 2026 to 11 JUN 2026