

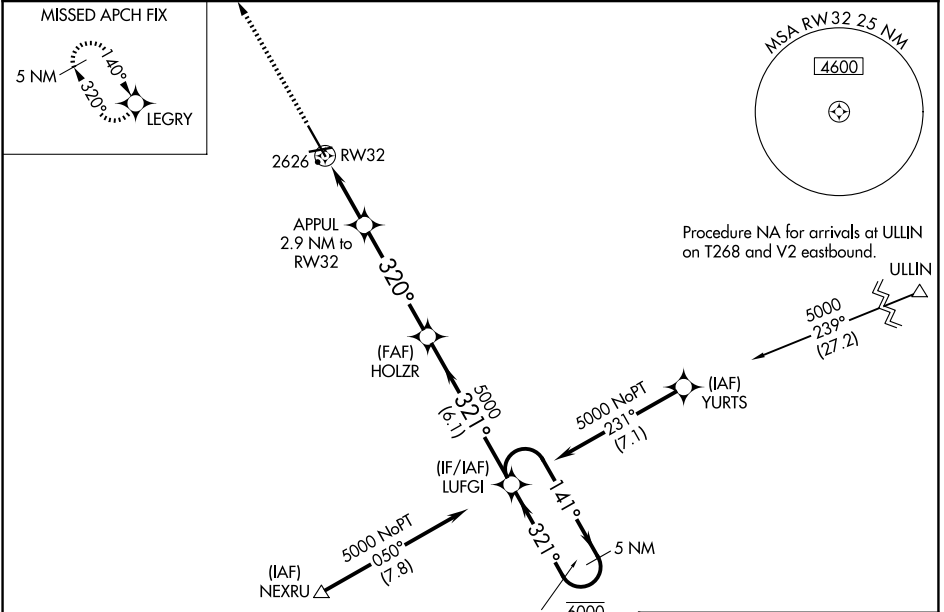
WAAS CH 50544 W32A	APP CRS 320°	Rwy Ldg TDZE 2587 Apt Elev 2592	7301
--	------------------------	---	-------------

RNAV (GPS) RWY 32

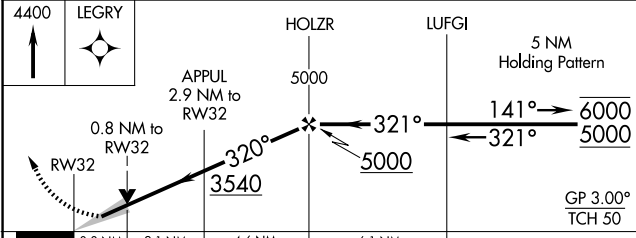
DICKINSON/THEODORE ROOSEVELT RGNL (DIK)

RNP APCH - GPS.	MALSR 	MISSED APPROACH: Climb to 4400 direct LEGRY and hold.
<p>⚠ For uncompensated Baro-VNAV systems, LNAV/VNAV NA below -24°C or above 54°C. For inop ALS, increase LNAV/VNAV all Cats visibility to 3/4 SM and LNAV Cat C/D visibility to 2/3 SM.</p>		

ASOS 118.375	MINNEAPOLIS CENTER 124.25 236.825	UNICOM 123.0 (CTAF)
------------------------	---	-------------------------------

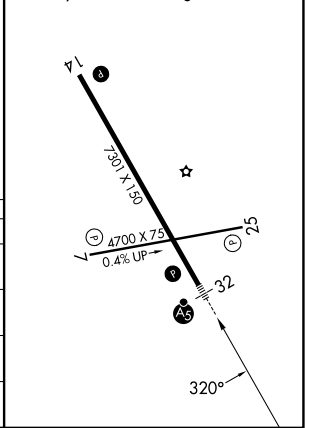


Procedure NA for arrivals at NEXRU on V491 southbound.



ELEV 2592	D	TDZE 2587
-----------	----------	-----------

HIRL Rwy 14-32 **Ⓛ**
MIRL Rwy 7-25 **Ⓛ**
REIL Rws 7, 14 and 25 **Ⓛ**



CATEGORY	A	B	C	D
LPV DA		2787-1/2	200 (200-1/2)	
LNAV/VNAV DA		2837-1/2	250 (300-1/2)	
LNAV MDA		2880-1/2	293 (300-1/2)	
CIRCLING	3060-1	468 (500-1)	3120-1/2 528 (600-1/2)	3200-2 608 (700-2)

NC-1, 14 MAY 2026 to 11 JUN 2026

NC-1, 14 MAY 2026 to 11 JUN 2026