

WAAS CH <b>49118</b> <b>W18A</b>	APP CRS <b>183°</b>	Rwy Ldg TDZE Apt Elev	<b>5401</b> <b>395</b> <b>401</b>
--	------------------------	-----------------------------	---

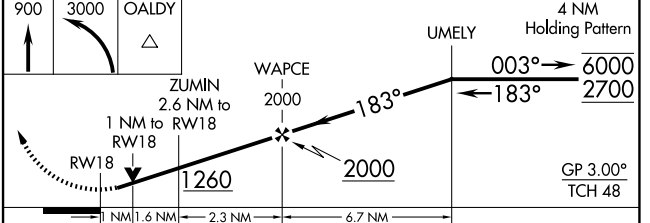
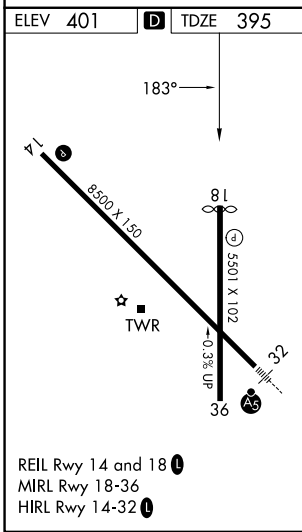
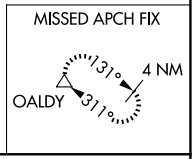
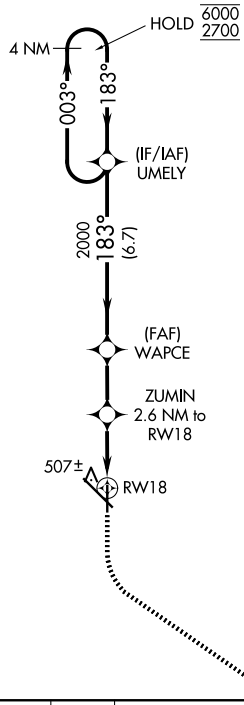
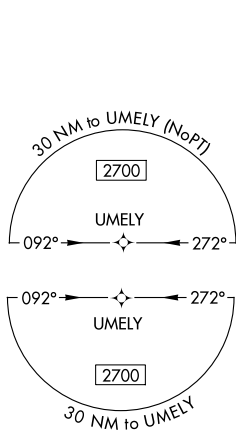
# RNAV (GPS) RWY 18

DOTHAN RGNL (DHN)

RNP APCH - GPS.  
 ▼ For uncompensated Baro-VNAV systems, LNAV/VNAV NA below -3°C or above 54°C. Rwy 18 helicopter visibility reduction below ¾ SM NA.

MISSED APPROACH: Climb to 900 then climbing left turn to 3000 direct OALDY and hold.

ATIS <b>135.725</b>	CAIRNS APP CON * <b>125.4 327.125</b>	<b>DOTHAN TOWER *</b> <b>118.4 (CTAF) 0 257.6</b>	GND CON <b>121.7 348.6</b>	UNICOM <b>122.95</b>
------------------------	--	--	-------------------------------	-------------------------



CATEGORY	A	B	C	D
LPV DA		645-¾	250 (300-¾)	
LNAV/VNAV DA		676-7/8	281 (300-7/8)	
LNAV MDA		760-1	365 (400-1)	
CIRCLING	860-1	459 (500-1)	920-1½ 519 (600-1½)	1040-2 639 (700-2)

SE-4, 14 MAY 2026 to 11 JUN 2026

SE-4, 14 MAY 2026 to 11 JUN 2026

REIL Rwy 14 and 18  
MIRL Rwy 18-36  
HIRL Rwy 14-32