

LOC I-DLH <b>110.3</b>	APP CRS <b>093°</b>	Rwy Ldg <b>10062</b>
		TDZE <b>1428</b>
		Apt Elev <b>1428</b>

# ILS RWY 9 (SA CAT I)

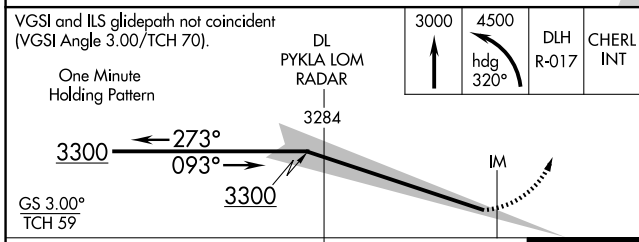
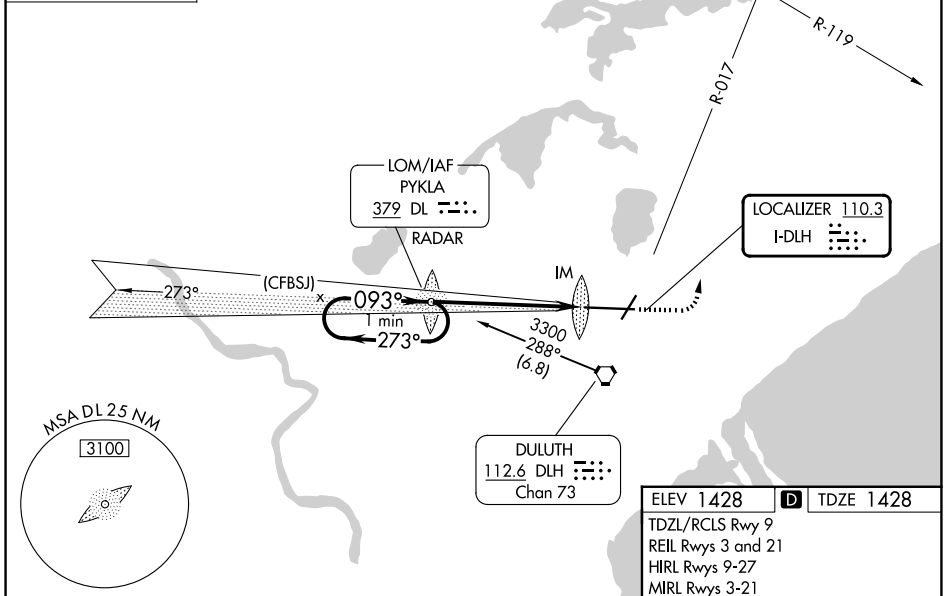
## DULUTH INTL (DLH)

<b>ASR</b> Requires specific OPSPEC, MSPEC, or LOA approval and use of HUD to DH. ADF or RADAR required.	<b>ALSF-2</b> 	<b>MISSED APPROACH:</b> Climb to 3000 then climbing left turn to 4500 on heading 320° and on DLH VORTAC R-017 to CHERL INT/DLH 15 DME and hold.	
	<b>ATIS</b> <b>124.1 270.1</b>	<b>DULUTH APP CON</b> <b>125.45 233.7</b>	<b>DULUTH TOWER</b> <b>118.3 257.8</b>

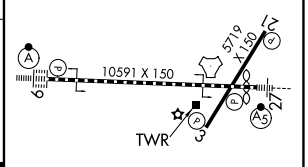
**ALTERNATE MISSED APCH FIX**

PYKLA  
 DL 379  
 RADAR

**ADF or RADAR REQUIRED**



ELEV 1428	<b>D</b>	TDZE 1428
TDZL/RCLS Rwy 9 REIL Rws 3 and 21 HIRL Rws 9-27 MIRL Rws 3-21		



CATEGORY	A	B	C	D
S-ILS 9	RA 144/14 150 DA 1578			

**SA CATEGORY I ILS - SPECIAL AIRCREW & AIRCRAFT CERTIFICATION REQUIRED**

NC-1, 14 MAY 2026 to 11 JUN 2026

NC-1, 14 MAY 2026 to 11 JUN 2026